

Nur für Forschungszwecke

DOCK1 Monoklonaler Antikörper

Katalog-Nr.:67296-1-Ig



Allgemeine Informationen

Katalog-Nr.:
67296-1-Ig

Größe:
150ul, Konzentration: 1700 µg/ml von1793
Nanodrop und 1000 µg/ml durch die
Bradford-Methode mit BSA als
Standard;

Wirt:
Maus

Isotyp:
IgG2a

Immunogen Katalognummer:
AG18069

GenBank-Zugangsnummer:
BC146857

GeneID (NCBI):

Vollständiger Name:
dedicator of cytokinesis 1

Berechnete Masse:
1865 aa, 215 kDa

Beobachtete Masse:
215 kDa

Reinigungsmethode:
Protein-A-Reinigung

CloneNo.:
1C3F12

Empfohlene Verdünnungen:
WB 1:1000-1:6000

Anwendungen

Geprüfte Anwendungen:
WB, ELISA

Getestete Reaktivität:
Human, Maus, Ratte

Positivkontrollen:

WB : HeLa-Zellen, 4T1-Zellen, HEK-293-Zellen, HepG2-Zellen, NIH/3T3-Zellen

Hintergrundinformationen

DOCK1, also named as DOCK180, belongs to the DOCK family. It is involved in cytoskeletal rearrangements required for phagocytosis of apoptotic cells and cell motility. DOCK1 functions as a guanine nucleotide exchange factor (GEF), which activates Rac Rho small GTPases by exchanging bound GDP for free GTP. Its GEF activity may be enhanced by ELMO1

Lagerung

Lagerungsbedingungen:

Bei -20°C lagern. Nach dem Versand ein Jahr lang stabil

Lagerungspuffer:

PBS mit 0.02% Natriumazid und 50% Glycerin pH 7.3.

Aliquotieren ist nicht notwendig bei -20°C Lagerung

*** 20ul-Größen enthalten 0.1% BSA

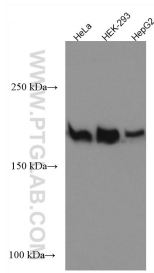
For technical support and original validation data for this product please contact:

T: 1 (888) 4PTGLAB (1-888-478-4522) (toll free
in USA), or 1(312) 455-8498 (outside USA)

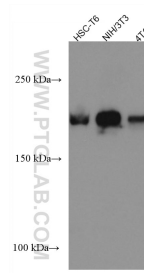
E: proteintech@ptglab.com
W: ptglab.com

This product is exclusively available under Proteintech Group brand and is not available to purchase from any other manufacturer.

Ausgewählte Validierungsdaten



Various lysates were subjected to SDS PAGE followed by western blot with 67296-1-Ig (DOCK1 antibody) at dilution of 1:3000 incubated at room temperature for 1.5 hours.



Various lysates were subjected to SDS PAGE followed by western blot with 67296-1-Ig (DOCK1 antibody) at dilution of 1:3000 incubated at room temperature for 1.5 hours.