

Nur für Forschungszwecke

KLF6 Monoklonaler Antikörper

Katalog-Nr.: 67297-1-Ig **1 Publikationen**



Allgemeine Informationen

Katalog-Nr.: 67297-1-Ig	GenBank-Zugangsnummer: BC000311	Reinigungsmethode: Protein-A-Reinigung
Größe: 150ul, Konzentration: 1800 µg/ml von1316 Nanodrop und 1000 µg/ml durch die Bradford-Methode mit BSA als Standard;	GeneID (NCBI): Vollständiger Name: Kruppel-like factor 6	CloneNo.: 2F8B3
Wirt: Maus	Berechnete Masse: 32 kDa	Empfohlene Verdünnungen: WB 1:1000-1:6000
Isotyp: IgG1	Beobachtete Masse: 32-42 kDa	
Immunogen Katalognummer: AG6859		

Anwendungen

Geprüfte Anwendungen: WB, ELISA	Positivkontrollen: WB : JAR-Zellen, Jurkat-Zellen, K-562-Zellen, L02-Zellen, NCCIT-Zellen
In Publikationen genannte Anwendungen: WB	
Getestete Reaktivität: Human, Maus	
Zitierte Arten: Human	

Hintergrundinformationen

KLF6(krupple-like factor 6) is a zinc finger transcription factor and tumor suppressor with biological activities and transcriptional targets in growing range. It is highly expressed in placenta followed by spleen, thymus, prostate, testis, small intestine and colon. One key target gene of KLF6 in endoglin, which is a homodimeric cell membrane glycoprotein and TGF-β auxiliary receptor, owns a pro-angiogenic role in endothelial cells and is also involved in malignant progression. Also KLF6 induces apoptosis in prostate cancer cells through upregulation of ATF3. KLF6 was normal detected as a 46kDa protein, which is larger than translation product(32kDa), because of post-translational modification including both phosphorylation and glycosylation. This antibody raise against the full length of KLF6 gene of human origin, and can recognize both of KLF6, included KLF6(~32kDa), p-KLF6(~35-46kDa). Otherwise, there may be a non-specific band(50kDa) showed in detection

Bemerkenswerte Veröffentlichungen

Verfasser	Pubmed ID	Journal	Anwendung
Yun Liu	32998707	BMC Mol Cell Biol	WB

Lagerung

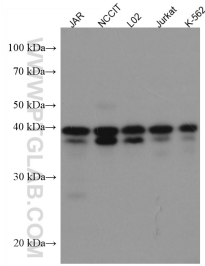
Lagerungsbedingungen:
Bei -20°C lagern. Nach dem Versand ein Jahr lang stabil
Lagerungspuffer:
PBS mit 0.02% Natriumazid und 50% Glycerin pH 7.3.
Aliquotieren ist nicht notwendig bei -20°C Lagerung

*** 20ul-Größen enthalten 0.1% BSA

For technical support and original validation data for this product please contact:
T: 1 (888) 4PTGLAB (1-888-478-4522) (toll free in USA), or 1(312) 455-8498 (outside USA)
E: proteintech@ptglab.com
W: ptglab.com

This product is exclusively available under Proteintech Group brand and is not available to purchase from any other manufacturer.

Ausgewählte Validierungsdaten



Various lysates were subjected to SDS PAGE followed by western blot with 67297-1-Ig (KLF6 antibody) at dilution of 1:3000 incubated at room temperature for 1.5 hours.