

## Allgemeine Informationen

<b>Katalog-Nr.:</b> 67311-1-Ig	<b>GenBank-Zugangsnummer:</b> BC014532	<b>Reinigungsmethode:</b> Protein-A-Reinigung
<b>Größe:</b> 150ul , Konzentration: 1600 µg/ml von28960 Nanodrop und 1000 µg/ml durch die Bradford-Methode mit BSA als Standard;	<b>GeneID (NCBI):</b> 150ul , Konzentration: 1600 µg/ml von28960	<b>CloneNo.:</b> 1B2E4
<b>Wirt:</b> Maus	<b>Vollständiger Name:</b> decapping enzyme, scavenger	<b>Empfohlene Verdünnungen:</b> WB 1:1000-1:6000 IHC 1:250-1:1000 IF 1:200-1:800
<b>Isotyp:</b> IgG2b	<b>Berechnete Masse:</b> 337 aa, 39 kDa	
<b>Immunogen Katalognummer:</b> AG8872	<b>Beobachtete Masse:</b> 35-40 kDa	

## Anwendungen

<b>Geprüfte Anwendungen:</b> IF, IHC, WB, ELISA	<b>Positivkontrollen:</b>
<b>Getestete Reaktivität:</b> Human	<b>WB :</b> HeLa-Zellen, HepG2-Zellen, Jurkat-Zellen, K-562-Zellen, Maushirngewebe, Rattenmilzgewebe
<b>Hinweis-IHC: Antigendemaskierung mit TE-Puffer pH 9,0 empfohlen. (*) Wahlweise kann die Antigendemaskierung auch mit Citratpuffer pH 6,0 erfolgen.</b>	<b>IHC :</b> humanes Mammakarzinomgewebe, <b>IF :</b> humanes Leberkarzinomgewebe,

## Hintergrundinformationen

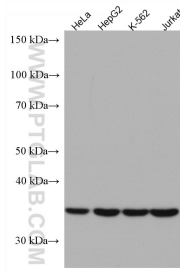
Dcp5, which is a member of the histidine triad (HIT) superfamily of pyrophosphatases, is the first HIT protein with a defined biological function and identifies the HIT motif as a new mRNA decapping domain. Dcp5 can encode a 38-40 kDa protein, and has the potential to form a homodimer of 80 kDa(PMID: 12198172).

## Lagerung

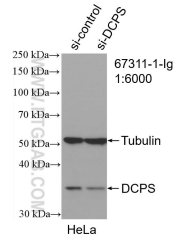
**Lagerungsbedingungen:**  
Bei -20°C lagern.  
**Lagerungspuffer:**  
PBS mit 0.02% Natriumazid und 50% Glycerin pH 7.3.  
**Aliquotieren ist nicht notwendig bei -20°C Lagerung**

\*\*\* 20ul-Größen enthalten 0.1% BSA

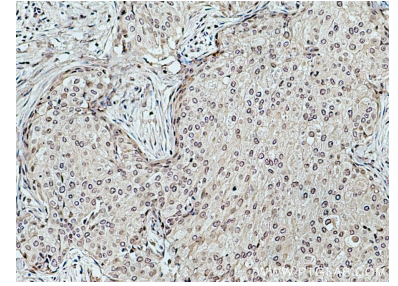
## Ausgewählte Validierungsdaten



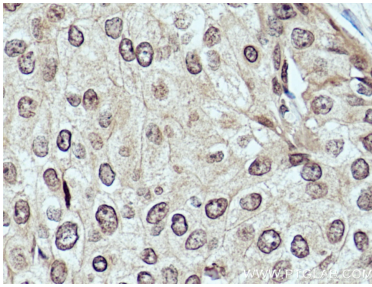
Various lysates were subjected to SDS PAGE followed by western blot with 67311-1-Ig (DCPS antibody) at dilution of 1:3000 incubated at room temperature for 1.5 hours.



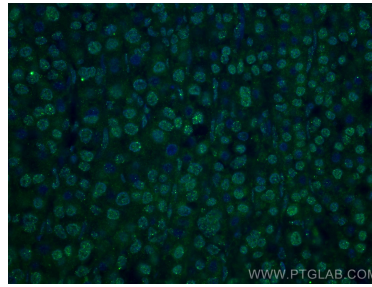
WB result of DCPS antibody (67311-1-Ig: 1:6000; incubated at room temperature for 1.5 hours) with sh-Control and sh-DCPS transfected HeLa cells.



Immunohistochemical analysis of paraffin-embedded human breast cancer tissue slide using 67311-1-Ig (DCPS antibody) at dilution of 1:500 (under 10x lens). Heat mediated antigen retrieval with Tris-EDTA buffer (pH 9.0).



Immunohistochemical analysis of paraffin-embedded human breast cancer tissue slide using 67311-1-Ig (DCPS antibody) at dilution of 1:500 (under 40x lens). Heat mediated antigen retrieval with Tris-EDTA buffer (pH 9.0).



Immunofluorescent analysis of (4% PFA) fixed human liver cancer tissue using DCPS antibody (67311-1-Ig, Clone: 1B2E4) at dilution of 1:400 and CoraLite® 488-Conjugated AffiniPure Goat Anti-Mouse IgG(H+L).