

Allgemeine Informationen

Katalog-Nr.: 67317-1-Ig	GenBank-Zugangsnummer: BC101075	Reinigungsmethode: Protein-G-Reinigung
Größe: 150ul , Konzentration: 700 µg/ml von Nanodrop und 500 µg/ml durch die Bradford-Methode mit BSA als Standard;	GeneID (NCBI): 51311	CloneNo.: 3B6A4
Wirt: Maus	Vollständiger Name: toll-like receptor 8	Empfohlene Verdünnungen: WB 1:5000-1:50000 IHC 1:50-1:500 IF 1:200-1:800
Isotyp: IgG1	Berechnete Masse: 1041 aa, 120 kDa	
Immunogen Katalognummer: AG16566	Beobachtete Masse: 120 kDa	

Anwendungen

Geprüfte Anwendungen: IF, IHC, WB,ELISA	Positivkontrollen:
Getestete Reaktivität: Human	WB : Daudi-Zellen, HL-60-Zellen, K-562-Zellen, U-937-Zellen
Hinweis-IHC: Antigendemaskierung mit TE-Puffer pH 9,0 empfohlen. (*) Wahlweise kann die Antigendemaskierung auch mit Citratpuffer pH 6,0 erfolgen.	IHC : humanes Tonsillitisgewebe,
	IF : humanes Tonsillitisgewebe,

Hintergrundinformationen

Toll-like receptors (TLRs) are a group of pathogen recognition receptors (PRRs) that can be divided into two subfamilies depending on their subcellular localization (PMID: 32268138). Toll-like receptor 8 (TLR8), a sensor for pathogen-derived single-stranded RNA (ssRNA), binds to uridine (Uri) and ssRNA to induce defense responses (PMID:30535046). TLR8 proteins were expressed in spleen, epididymal sperm, testicular sperm cells, and Leydig cells but were weak in Sertoli cells. It can identify two isoforms, 120 and 122 kDa.

Lagerung

Lagerungsbedingungen:
Bei -20°C lagern.
Lagerungspuffer:
PBS mit 0.02% Natriumazid und 50% Glycerin pH 7.3.
Aliquotieren ist nicht notwendig bei -20°C Lagerung

*** 20ul-Größen enthalten 0.1% BSA

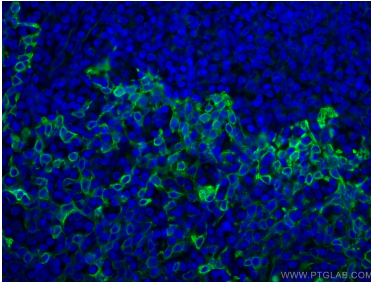
For technical support and original validation data for this product please contact:

T: 1 (888) 4PTGLAB (1-888-478-4522) (toll free in USA), or 1(312) 455-8498 (outside USA)

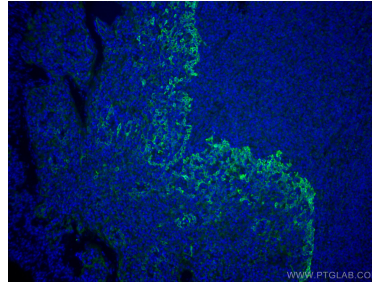
E: proteintech@ptglab.com
W: ptglab.com

This product is exclusively available under Proteintech Group brand and is not available to purchase from any other manufacturer.

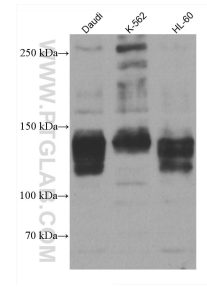
Ausgewählte Validierungsdaten



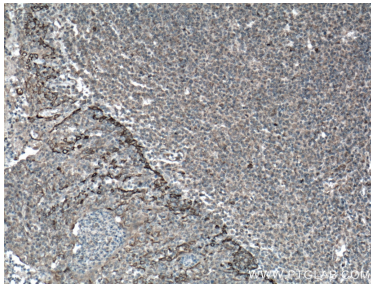
Immunofluorescent analysis of (4% PFA) fixed human tonsillitis tissue using TLR8 antibody (67317-1-Ig, Clone: 3B6A4) at dilution of 1:400 and CoraLite®488-Conjugated AffiniPure Goat Anti-Mouse IgG(H+L).



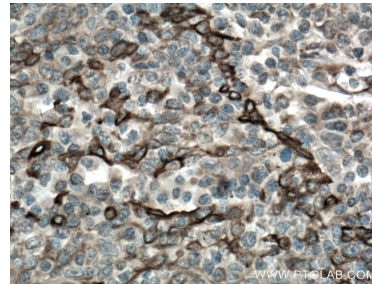
Immunofluorescent analysis of (4% PFA) fixed human tonsillitis tissue using TLR8 antibody (67317-1-Ig, Clone: 3B6A4) at dilution of 1:400 and CoraLite®488-Conjugated AffiniPure Goat Anti-Mouse IgG(H+L).



Various lysates were subjected to SDS PAGE followed by western blot with 67317-1-Ig (TLR8 antibody) at dilution of 1:10000 incubated at room temperature for 1.5 hours.



Immunohistochemical analysis of paraffin-embedded human tonsillitis tissue slide using 67317-1-Ig (TLR8 antibody) at dilution of 1:200 (under 10x lens). Heat mediated antigen retrieval with Tris-EDTA buffer (pH 9.0).



Immunohistochemical analysis of paraffin-embedded human tonsillitis tissue slide using 67317-1-Ig (TLR8 antibody) at dilution of 1:200 (under 40x lens). Heat mediated antigen retrieval with Tris-EDTA buffer (pH 9.0).