

Nur für Forschungszwecke

ODC1 Monoklonaler Antikörper

Katalog-Nr.:67336-1-Ig

Vorgestelltes Produkt



Allgemeine Informationen

Katalog-Nr.:
67336-1-Ig

Größe:

150ul, Konzentration: 2000 µg/ml von4953

Nanodrop und 940 µg/ml durch die
Bradford-Methode mit BSA als
Standard;

Wirt:

Maus

Isotyp:

IgG1

Immunogen Katalognummer:

AG10927

GenBank-Zugangsnummer:

BC025296

GeneID (NCBI):

4953

Vollständiger Name:

ornithine decarboxylase 1

Berechnete Masse:

461 aa, 51 kDa

Beobachtete Masse:

51 kDa

Reinigungsmethode:

Protein-G-Reinigung

CloneNo.:

2A1E3

Empfohlene Verdünnungen:

WB 1:5000-1:50000

Anwendungen

Geprüfte Anwendungen:

WB,ELISA

Getestete Reaktivität:

Human

Positivkontrollen:

WB : MCF-7-Zellen, humanes Plazenta-Gewebe,
HUVEC-Zellen

Hintergrundinformationen

Ornithine decarboxylase (ODC) is also named as ODC1 and belongs to the Orn/Lys/Arg decarboxylase class-II family. It catalyzes the conversion of ornithine to putrescine, the first step and a major site of regulation of polyamine biosynthesis. The level of ODC is known to be controlled at several sites, namely transcription, translation, and enzyme degradation. Polyamines can stimulate the degradation of ODC as a type of negative feedback control (PMID:8486633). This protein can be phosphorylated in vivo (PMID:8798774). ODC1 can form a homodimer and only the dimer is catalytically active, as the active sites are constructed of residues from both monomers (PMID: 10623504). The molecular mass of ODC1 is 51 kDa, and the homodimer is 106 kDa.

Lagerung

Lagerungsbedingungen:

Bei -20°C lagern.

Lagerungspuffer:

PBS mit 0.02% Natriumazid und 50% Glycerin pH 7.3.

Aliquotieren ist nicht notwendig bei -20°C Lagerung

*** 20ul-Größen enthalten 0.1% BSA

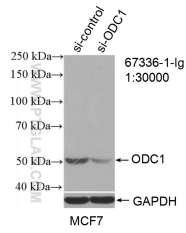
For technical support and original validation data for this product please contact:

T: 1 (888) 4PTGLAB (1-888-478-4522) (toll free
in USA), or 1(312) 455-8498 (outside USA)

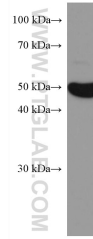
E: proteintech@ptglab.com
W: ptglab.com

This product is exclusively available under Proteintech Group brand and is not available to purchase from any other manufacturer.

Ausgewählte Validierungsdaten



WB result of ODC1 antibody (67336-1-Ig; 1:30000; incubated at room temperature for 1.5 hours) with sh-Control and sh-ODC1 transfected MCF-7 cells.



MCF-7 cells were subjected to SDS PAGE followed by western blot with 67336-1-Ig (ODC1 antibody) at dilution of 1:10000 incubated at room temperature for 1.5 hours.