

Nur für Forschungszwecke

PSMD9 Monoklonaler Antikörper

Katalog-Nr.:67338-1-Ig

Vorgestelltes Produkt



Allgemeine Informationen

Katalog-Nr.:
67338-1-Ig

Größe:

150ul, Konzentration: 1600 µg/ml von 5715

Nanodrop und 940 µg/ml durch die
Bradford-Methode mit BSA als
Standard;

Wirt:

Maus

Isotyp:

IgG1

Immunogen Katalognummer:

AG25654

GenBank-Zugangsnummer:

BC004213

GeneID (NCBI):

von 5715

Vollständiger Name:

proteasome (prosome, macropain)
26S subunit, non-ATPase, 9

Berechnete Masse:

27 kDa

Beobachtete Masse:

30 kDa

Reinigungsmethode:

Protein-A-Reinigung

CloneNo.:

1H2G1

Empfohlene Verdünnungen:

WB 1:2000-1:10000

IHC 1:400-1:1600

IF 1:200-1:800

Anwendungen

Geprüfte Anwendungen:

IF, IHC, WB, ELISA

Getestete Reaktivität:

Human, Maus, Ratte

**Hinweis-IHC: Antigendemaskierung mit TE-
Puffer pH 9,0 empfohlen. (*) Wahlweise
kann die Antigendemaskierung auch mit
Citratpuffer pH 6,0 erfolgen.**

Positivkontrollen:

WB: A549-Zellen, 4T1-Zellen, HEK-293-Zellen, HeLa-
Zellen, HepG2-Zellen, Jurkat-Zellen, K-562-Zellen,
LNCaP-Zellen, NIH/3T3-Zellen

IHC: humanes Zervixkarzinomgewebe,

IF: HeLa-Zellen,

Hintergrundinformationen

PSMD9 is a ubiquitous protein of eukaryotic cells and is a chaperon of the 26S proteasome complex, which degrades ubiquitinated proteins in eukaryotic cells and contributes to the degradation of intracellular proteins into antigenic peptides for antigen presentation by MHC class I cells. The 26S mammalian base sub-complex involves three distinct modules which have ATPase subunits distinctly associated to three chaperones, one of which is PSMD9 regulating the modules assembly. The PSMD9 ubiquitous regulatory role within the proteasome implies its potential pleiotropic effects within different physio-pathological systems. PSMD9 is known to form a stable subcomplex with PSMC3 and PSMC6, two of the AAA-ATPases, assisting in the assembly of the 20S and 19S particles to form the holo complex.

Lagerung

Lagerungsbedingungen:

Bei -20°C lagern. Nach dem Versand ein Jahr lang stabil

Lagerungspuffer:

PBS mit 0.02% Natriumazid und 50% Glycerin pH 7.3.

Aliquotieren ist nicht notwendig bei -20°C Lagerung

*** 20ul-Größen enthalten 0.1% BSA

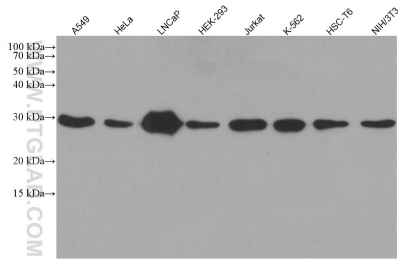
For technical support and original validation data for this product please contact:

T: 1 (888) 4PTGLAB (1-888-478-4522) (toll free
in USA), or 1(312) 455-8498 (outside USA)

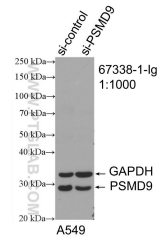
E: proteintech@ptglab.com
W: ptglab.com

This product is exclusively available under Proteintech
Group brand and is not available to purchase from any
other manufacturer.

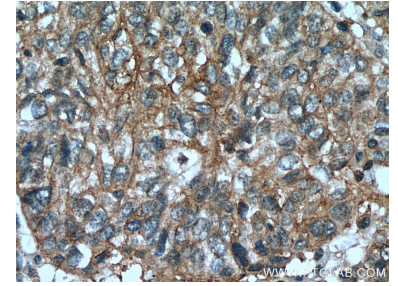
Ausgewählte Validierungsdaten



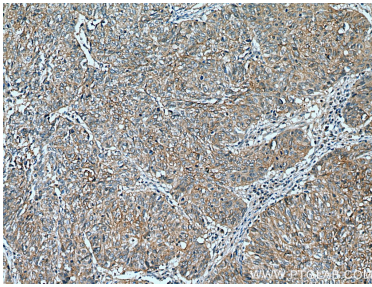
Various lysates were subjected to SDS PAGE followed by western blot with 67338-1-Ig (PSMD9 antibody) at dilution of 1:5000 incubated at room temperature for 1.5 hours.



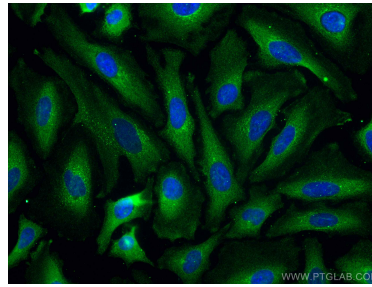
WB result of PSMD9 antibody (67338-1-Ig; 1:1000; incubated at room temperature for 1.5 hours) with sh-Control and sh-PSMD9 transfected A549 cells.



Immunohistochemical analysis of paraffin-embedded human cervical cancer tissue slide using 67338-1-Ig (PSMD9 antibody) at dilution of 1:800 (under 40x lens). Heat mediated antigen retrieval with Tris-EDTA buffer (pH 9.0).



Immunohistochemical analysis of paraffin-embedded human cervical cancer tissue slide using 67338-1-Ig (PSMD9 antibody) at dilution of 1:800 (under 10x lens). Heat mediated antigen retrieval with Tris-EDTA buffer (pH 9.0).



Immunofluorescent analysis of (-20°C Ethanol) fixed HeLa cells using PSMD9 antibody (67338-1-Ig, Clone: 1H2G1) at dilution of 1:400 and CoraLite® 488-Conjugated AffiniPure Goat Anti-Mouse IgG(H+L).