

Nur für Forschungszwecke

# SYNPO Monoklonaler Antikörper

Katalog-Nr.: 67339-1-Ig **2 Publikationen**



## Allgemeine Informationen

<b>Katalog-Nr.:</b> 67339-1-Ig	<b>GenBank-Zugangsnummer:</b> BC146665	<b>Reinigungsmethode:</b> Protein-G-Reinigung
<b>Größe:</b> 150ul, Konzentration: 1800 µg/ml von11346 Nanodrop und 1000 µg/ml durch die Bradford-Methode mit BSA als Standard;	<b>GeneID (NCBI):</b> 11346	<b>CloneNo.:</b> 1E1B1
<b>Wirt:</b> Maus	<b>Vollständiger Name:</b> synaptopodin	<b>Empfohlene Verdünnungen:</b> WB 1:2000-1:10000 IHC 1:750-1:3000 IF 1:200-1:800
<b>Isotyp:</b> IgG1	<b>Berechnete Masse:</b> 929 aa, 99 kDa	
<b>Immunogen Katalognummer:</b> AG15089	<b>Beobachtete Masse:</b> 100-110 kDa	

## Anwendungen

<b>Geprüfte Anwendungen:</b> IF, IHC, WB, ELISA	<b>Positivkontrollen:</b>
<b>In Publikationen genannte Anwendungen:</b> WB	<b>WB:</b> Rattenhirngewebe, Hausschwein-Hirngewebe, Maushirngewebe
<b>Getestete Reaktivität:</b> Hausschwein, Human, Maus, Ratte	<b>IHC:</b> Rattenhirngewebe, humanes Nierengewebe, Mausnierengewebe
<b>Zitierte Arten:</b> Maus	<b>IF:</b> Maushirngewebe,
<b>Hinweis-IHC: Antigenmaskierung mit TE-Puffer pH 9,0 empfohlen. (*) Wahlweise kann die Antigenmaskierung auch mit Citratpuffer pH 6,0 erfolgen.</b>	

## Hintergrundinformationen

Synaptopodin is a actin-associated protein expressed in mature dendritic spines and renal podocytes. Several isoforms of synaptopodin have been reported: the 100 kDa neural form and 110 kDa renal form. 44-45 kDa may represent the degradation product of synaptopodin. As a podocyte specific protein, synaptopodin expression level was decreased in kidney but increased in the urinary podocytes from patients with preeclampsia, indicating that synaptopodin is a useful marker for preeclampsia. (15841212, 10555072)

## Bemerkenswerte Veröffentlichungen

Verfasser	Pubmed ID	Journal	Anwendung
Shan Song	35908070	Cell Death Dis	WB
Chunkai Huang	35478960	Front Cell Dev Biol	WB

## Lagerung

**Lagerungsbedingungen:**  
Bei -20°C lagern.  
**Lagerungspuffer:**  
PBS mit 0.02% Natriumazid und 50% Glycerin pH 7.3.  
Aliquotieren ist nicht notwendig bei -20°C Lagerung

**\*\*\* 20ul-Größen enthalten 0.1% BSA**

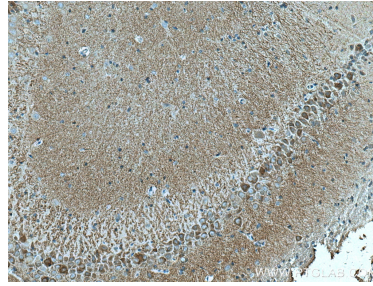
For technical support and original validation data for this product please contact:  
T: 1 (888) 4PTGLAB (1-888-478-4522) (toll free in USA), or 1(312) 455-8498 (outside USA)  
E: proteintech@ptglab.com  
W: ptglab.com

**This product is exclusively available under Proteintech Group brand and is not available to purchase from any other manufacturer.**

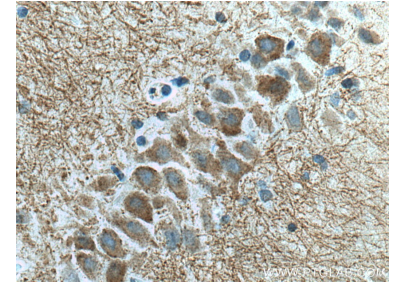
## Ausgewählte Validierungsdaten



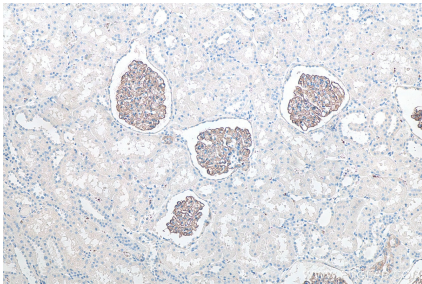
rat brain tissue were subjected to SDS PAGE followed by western blot with 67339-1-Ig (SYNPO antibody) at dilution of 1:5000 incubated at room temperature for 1.5 hours.



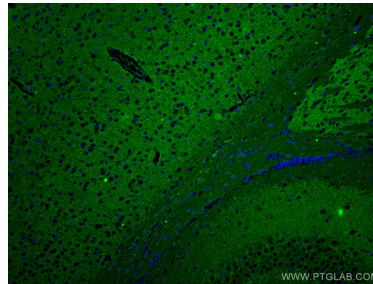
Immunohistochemical analysis of paraffin-embedded rat brain tissue slide using 67339-1-Ig (SYNPO antibody) at dilution of 1:1500 (under 10x lens). Heat mediated antigen retrieval with Tris-EDTA buffer (pH 9.0).



Immunohistochemical analysis of paraffin-embedded rat brain tissue slide using 67339-1-Ig (SYNPO antibody) at dilution of 1:1500 (under 40x lens). Heat mediated antigen retrieval with Tris-EDTA buffer (pH 9.0).



Immunohistochemical analysis of paraffin-embedded human kidney tissue slide using 67339-1-Ig (SYNPO antibody) at dilution of 1:8000 (under 10x lens). Heat mediated antigen retrieval with Tris-EDTA buffer (pH 9.0).



Immunofluorescent analysis of (4% PFA) fixed mouse brain tissue using SYNPO antibody (67339-1-Ig, Clone: 1E1B1) at dilution of 1:400 and Coralite®488-Conjugated AffiniPure Goat Anti-Mouse IgG(H+L).