

Nur für Forschungszwecke

ATG7 Monoklonaler Antikörper

Katalog-Nr.:67341-1-Ig

Vorgestelltes Produkt

23 Publikationen



Allgemeine Informationen

Katalog-Nr.: 67341-1-Ig	GenBank-Zugangsnummer: BC000091	Reinigungsmethode: Protein-A-Reinigung
Größe: 150ul, Konzentration: 1800 µg/ml von10533 Nanodrop und 1000 µg/ml durch die Bradford-Methode mit BSA als Standard;	GeneID (NCBI): 10533	CloneNo.: 2B5A10
Wirt: Maus	Vollständiger Name: ATG7 autophagy related 7 homolog (S. cerevisiae)	Empfohlene Verdünnungen: WB 1:5000-1:50000 IHC 1:500-1:2000 IF 1:50-1:500
Isotyp: IgG2a	Berechnete Masse: 78 kDa	
Immunogen Katalognummer: AG29172	Beobachtete Masse: 68-78 kDa	

Anwendungen

Geprüfte Anwendungen: FC, IF, IHC, WB, ELISA	Positivkontrollen: WB : LNCaP-Zellen, 4T1-Zellen, Hausschwein- Milzgewebe, HEK-293-Zellen, HeLa-Zellen, HepG2- Zellen, Jurkat-Zellen, NIH/3T3-Zellen, THP-1-Zellen
In Publikationen genannte Anwendungen: IF, IHC, WB	IHC : humanes Zervixkarzinomgewebe, IF : HeLa-Zellen,
Getestete Reaktivität: Hausschwein, Human, Maus, Ratte	
Zitierte Arten: Human, Hund, Maus, Ratte	

Hinweis-IHC: Antigendemaskierung mit TE-Puffer pH 9,0 empfohlen. (*) Wahlweise kann die Antigendemaskierung auch mit Citratpuffer pH 6,0 erfolgen.

Hintergrundinformationen

Atg7 is an E1-like enzyme that is specifically involved in autophagosome formation and is essential for autophagy. As an autophagic-related protein it is required for linking to Atg12, Atg5 and Atg8, which are essential for Atg conjugation and autophagosome formation. Atg7 has been reported as an important regulator of autophagy with starvation-induced or chemotherapeutic agent treatment. The high expression level of ATG7 is related to the survival of patients with breast cancer. There are several isoforms of ATG7 protein ranged from 68 kDa to 78 kDa.

Bemerkenswerte Veröffentlichungen

Verfasser	Pubmed ID	Journal	Anwendung
Meng Wang	36090477	Mol Ther Oncolytics	WB
Syed Riaz Ud Din	33044599	Appl Microbiol Biotechnol	WB
Xinxin Si	36382664	Pharmacology	IHC

Lagerung

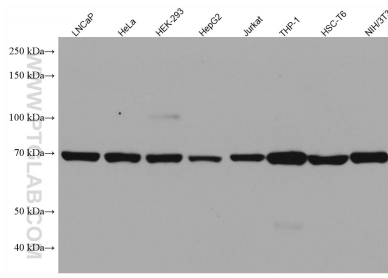
Lagerungsbedingungen:
Bei -20°C lagern. Nach dem Versand ein Jahr lang stabil
Lagerungspuffer:
PBS mit 0.02% Natriumazid und 50% Glycerin pH 7.3.
Aliquotieren ist nicht notwendig bei -20°C Lagerung

*** 20ul-Größen enthalten 0.1% BSA

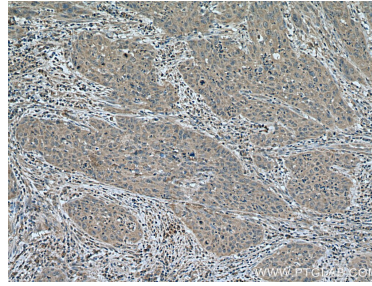
For technical support and original validation data for this product please contact:
T: 1 (888) 4PTGLAB (1-888-478-4522) (toll free in USA), or 1(312) 455-8498 (outside USA)
E: proteintech@ptglab.com
W: ptglab.com

This product is exclusively available under Proteintech Group brand and is not available to purchase from any other manufacturer.

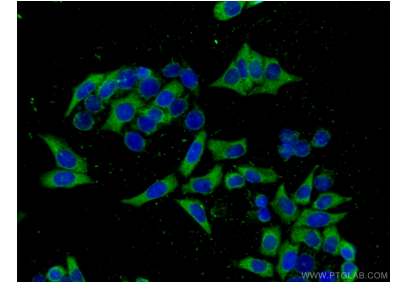
Ausgewählte Validierungsdaten



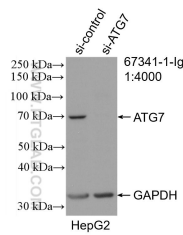
LNCaP cells were subjected to SDS PAGE followed by western blot with 67341-1-Ig (ATG7 antibody) at dilution of 1:10000 incubated at room temperature for 1.5 hours.



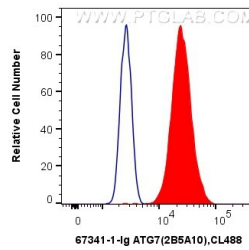
Immunohistochemical analysis of paraffin-embedded human cervical cancer tissue slide using 67341-1-Ig (ATG7 antibody) at dilution of 1:1000 (under 10x lens). Heat mediated antigen retrieval with Tris-EDTA buffer (pH 9.0).



Immunofluorescent analysis of (-20°C Ethanol) fixed HeLa cells using 67341-1-Ig (ATG7 antibody) at dilution of 1:100 and CoraLite488-Conjugated AffiniPure Goat Anti-Mouse IgG(H+L).



WB result of ATG7 antibody (67341-1-Ig; 1:4000; incubated at room temperature for 1.5 hours) with sh-Control and sh-ATG7 transfected HepG2 cells.



1x10⁶ HeLa cells were intracellularly stained with 0.5 ug Anti-Human ATG7 (67341-1-Ig, Clone:2B5A10) and CoraLite[®]488-Conjugated AffiniPure Goat Anti-Mouse IgG(H+L) at dilution 1:1000 (red), or 0.5 ug Mouse IgG2a Isotype Control (66360-2-Ig, Clone: K11A1B2A2) (blue). Cells were fixed with 4% PFA and permeabilized with Flow Cytometry Perm Buffer (PF00011-C).