

Nur für Forschungszwecke

PTGS1 Monoklonaler Antikörper

Katalog-Nr.:67346-1-Ig



Allgemeine Informationen

Katalog-Nr.: 67346-1-Ig	GenBank-Zugangsnummer: BC029840	Reinigungsmethode: Protein-A-Reinigung
Größe: 150ul , Konzentration: 1400 µg/ml von5742 Nanodrop und 1000 µg/ml durch die Bradford-Methode mit BSA als Standard;	GeneID (NCBI): 5742	CloneNo.: 1F12G7
Wirt: Maus	Vollständiger Name: prostaglandin-endoperoxide synthase 1 (prostaglandin G/H synthase and cyclooxygenase)	Empfohlene Verdünnungen: WB 1:1000-1:3000 IF 1:50-1:500
Isotyp: IgG2b	Berechnete Masse: 599 aa, 69 kDa	
Immunogen Katalognummer: AG28280	Beobachtete Masse: 60-72 kDa	

Anwendungen

Geprüfte Anwendungen: IF, WB,ELISA	Positivkontrollen: WB : L02-Zellen, A431-Zellen, K-562-Zellen
Getestete Reaktivität: Human	IF : HeLa-Zellen,

Hintergrundinformationen

PTGS1(Prostaglandin G/H synthase 1) belongs to the prostaglandin G/H synthase family and catalyzes the conversion of arachidonic acid to prostaglandin H₂, which is subsequently metabolized to various biologically active prostaglandins. It is also named as COX1(Cyclooxygenase-1). There is no PTGS1 expression in fetal samples (prostate, seminal vesicles, or ejaculatory ducts), and only minimal expression in adult tissues (PMID: 10999846). PTGS1 has some isoforms with MW of 56-72 kD and PTGS1 can form homodimer.

Lagerung

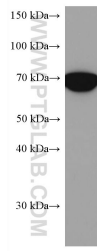
Lagerungsbedingungen:
Bei -20°C lagern.
Lagerungspuffer:
PBS mit 0.02% Natriumazid und 50% Glycerin pH 7.3.
Aliquotieren ist nicht notwendig bei -20°C Lagerung

***** 20ul-Größen enthalten 0.1% BSA**

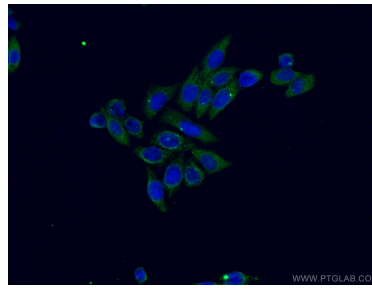
For technical support and original validation data for this product please contact:
T: 1 (888) 4PTGLAB (1-888-478-4522) (toll free in USA), or 1(312) 455-8498 (outside USA)
E: proteintech@ptglab.com
W: ptglab.com

This product is exclusively available under Proteintech Group brand and is not available to purchase from any other manufacturer.

Ausgewählte Validierungsdaten



L02 cells were subjected to SDS PAGE followed by western blot with 67346-1-Ig (PTGS1 antibody) at dilution of 1:3000 incubated at room temperature for 1.5 hours.



Immunofluorescent analysis of (-20°C Ethanol) fixed HeLa cells using 67346-1-Ig (PTGS1 antibody) at dilution of 1:100 and CoraLite488-Conjugated AffiniPure Goat Anti-Mouse IgG(H+L).