

Nur für Forschungszwecke

# SRY Monoklonaler Antikörper

Katalog-Nr.:67349-1-Ig **1 Publikationen**



## Allgemeine Informationen

<b>Katalog-Nr.:</b> 67349-1-Ig	<b>GenBank-Zugangsnummer:</b> BC074924	<b>Reinigungsmethode:</b> Protein-A-Reinigung
<b>Größe:</b> 150ul , Konzentration: 1600 µg/ml von6736 Nanodrop und 1000 µg/ml durch die Bradford-Methode mit BSA als Standard;	<b>GeneID (NCBI):</b> sex determining region Y	<b>CloneNo.:</b> 2E9A4
<b>Wirt:</b> Maus	<b>Berechnete Masse:</b> 204 aa, 24 kDa	<b>Empfohlene Verdünnungen:</b> WB 1:1000-1:4000
<b>Isotyp:</b> IgG1	<b>Beobachtete Masse:</b> 25-30 kDa	
<b>Immunogen Katalognummer:</b> AG12610		

## Anwendungen

<b>Geprüfte Anwendungen:</b> WB, ELISA	<b>Positivkontrollen:</b> WB : LNCaP-Zellen, DU 145-Zellen, HeLa-Zellen
<b>In Publikationen genannte Anwendungen:</b> WB	
<b>Getestete Reaktivität:</b> Human, Ratte	
<b>Zitierte Arten:</b> Human	

## Hintergrundinformationen

SRY (sex-determining region Y protein) is a tran-scriptional activator required for male sex determination in mammals. This protein, also referred to as testis-determining factor (TDF), is an HMG box protein that initiates the formation of testis from undifferentiated gonad. The DNA-binding activity of SRY is required for normal testis formation. This DNA-binding activity is thought to be regulated by PKA, which phosphorylates SRY in vivo. Mutations in SRY have been associated with 46,XY gonadal dysgenesis, in which the gonads fail to develop in XY phenotypic females.

## Bemerkenswerte Veröffentlichungen

Verfasser	Pubmed ID	Journal	Anwendung
James W Clancy	35235806	Cell Rep	WB

## Lagerung

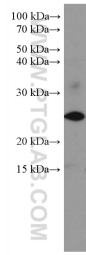
**Lagerungsbedingungen:**  
Bei -20°C lagern. Nach dem Versand ein Jahr lang stabil  
**Lagerungspuffer:**  
PBS mit 0.02% Natriumazid und 50% Glycerin pH 7.3.  
**Aliquotieren ist nicht notwendig bei -20°C Lagerung**

**\*\*\* 20ul-Größen enthalten 0.1% BSA**

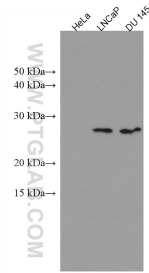
For technical support and original validation data for this product please contact:  
T: 1 (888) 4PTGLAB (1-888-478-4522) (toll free in USA), or 1(312) 455-8498 (outside USA)  
E: proteintech@ptglab.com  
W: ptglab.com

**This product is exclusively available under Proteintech Group brand and is not available to purchase from any other manufacturer.**

## Ausgewählte Validierungsdaten



LNCaP cells were subjected to SDS PAGE followed by western blot with 67349-1-Ig (SRY antibody) at dilution of 1:2000 incubated at room temperature for 1.5 hours.



Various lysates were subjected to SDS PAGE followed by western blot with 67349-1-Ig (SRY antibody) at dilution of 1:1000 incubated at room temperature for 1.5 hours. SRY negative cell line HeLa cell line was served as negative control.