

Nur für Forschungszwecke

MLH1 Monoklonaler Antikörper

Katalog-Nr.: 67350-1-Ig

Vorgestelltes Produkt



Allgemeine Informationen

Katalog-Nr.:
67350-1-Ig

Größe:

150ul, Konzentration: 2100 µg/ml von 4292

Nanodrop und 1000 µg/ml durch die Bradford-Methode mit BSA als Standard;

Wirt:

Maus

Isotyp:

IgG2a

Immunogen Katalognummer:
AG27723

GenBank-Zugangsnummer:

BC006850

GeneID (NCBI):

4292

Vollständiger Name:

mutL homolog 1, colon cancer, nonpolyposis type 2 (E. coli)

Berechnete Masse:

756 aa, 85 kDa

Beobachtete Masse:

85-100 kDa, 40-45 kDa

Reinigungsmethode:

Protein-A-Reinigung

CloneNo.:

2F12C4

Empfohlene Verdünnungen:

WB 1:5000-1:50000

Anwendungen

Geprüfte Anwendungen:

WB, ELISA

Getestete Reaktivität:

Human, Ratte

Positivkontrollen:

WB: A431-Zellen, Caco-2-Zellen, COLO 320-Zellen, HEK-293-Zellen, HeLa-Zellen, Jurkat-Zellen

Hintergrundinformationen

MLH1, also named as COCA2, belongs to the DNA mismatch repair mutL/hexB family. It heterodimerizes with PMS2 to form MutL alpha which is a component of the post-replicative DNA mismatch repair system (MMR). MutL alpha (MLH1-PMS2) interacts physically with the clamp loader subunits of DNA polymerase III, suggesting that it may play a role to recruit the DNA polymerase III to the site of the MMR. MLH1 also implicated in DNA damage signaling, a process which induces cell cycle arrest and can lead to apoptosis in case of major DNA damages. MLH1 heterodimerizes with MLH3 to form MutL gamma which plays a role in meiosis. (PMID: 16873062, PMID: 18206974) Defects in MLH1 are the cause of hereditary non-polyposis colorectal cancer type 2 (HNPCC2). Defects in MLH1 are a cause of mismatch repair cancer syndrome (MMRCS). Defects in MLH1 are a cause of Muir-Torre syndrome (MTS). Defects in MLH1 are a cause of susceptibility to endometrial cancer. Western blot analysis with an MLH1 antibody detected a 85-100 kDa band. Full-length human MLH1 is specifically cleaved into degradation products of 40-45 kDa by caspase-3 (PMID: 15087450, PMID: 19603033). This antibody is specific to MLH1.

Lagerung

Lagerungsbedingungen:

Bei -20°C lagern.

Lagerungspuffer:

PBS with 0.1% sodium azide and 50% glycerol pH 7.3.

Aliquotieren ist nicht notwendig bei -20°C Lagerung

*** 20ul-Größen enthalten 0.1% BSA

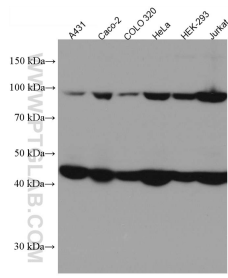
For technical support and original validation data for this product please contact:

T: 1 (888) 4PTGLAB (1-888-478-4522) (toll free in USA), or 1(312) 455-8498 (outside USA)

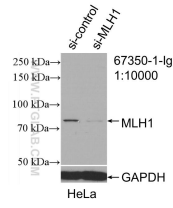
E: proteintech@ptglab.com
W: ptglab.com

This product is exclusively available under Proteintech Group brand and is not available to purchase from any other manufacturer.

Ausgewählte Validierungsdaten



Various lysates were subjected to SDS PAGE followed by western blot with 67350-1-Ig (MLH1 antibody) at dilution of 1:10000 incubated at room temperature for 1.5 hours.



WB result of MLH1 antibody (67350-1-Ig; 1:10000; incubated at room temperature for 1.5 hours) with sh-Control and sh-MLH1 transfected HeLa cells.