

Allgemeine Informationen

Katalog-Nr.: 67369-1-Ig	GenBank-Zugangsnummer: BC065195	Reinigungsmethode: Protein-G-Reinigung
Größe: 150ul , Konzentration: 1900 µg/ml von80339 Nanodrop und 1000 µg/ml durch die Bradford-Methode mit BSA als Standard;	GeneID (NCBI): von80339	CloneNo.: 1D2B11
Wirt: Maus	Vollständiger Name: patatin-like phospholipase domain containing 3	Empfohlene Verdünnungen: WB 1:2000-1:10000 IHC 1:250-1:1000 IF 1:400-1:1600
Isotyp: IgG1	Beobachtete Masse: 53 kDa	
Immunogen Katalognummer: AG27407		

Anwendungen

Geprüfte Anwendungen: IF, IHC, WB, ELISA	Positivkontrollen:
Getestete Reaktivität: Hausschwein, Human, Ratte	WB : HeLa-Zellen, HepG2-Zellen, HuH-7-Zellen, L02-Zellen, SMMC-7721-Zellen
Hinweis-IHC: Antigenmaskierung mit TE-Puffer pH 9,0 empfohlen. (*) Wahlweise kann die Antigenmaskierung auch mit Citratpuffer pH 6,0 erfolgen.	IHC : humanes Leberkarzinomgewebe,
	IF : HeLa-Zellen,

Hintergrundinformationen

PNPLA3 belongs to a family of proteins that share a domain that was first identified in patatin, a major soluble protein of potato tubers with nonspecific acyl hydrolase activity. The domain differs from classical lipases by employing a catalytic dyad (Ser-Asp), rather than a catalytic triad, to effect hydrolysis. PNPLA3 is expressed primarily in liver and adipose tissue, in which it partitions to membranes and lipid droplets. Real-time PCR of cDNA from human tissues indicated that PNPLA3 expression was highest in the liver, followed by skin and adipose tissue. PNPLA3 is expressed at the highest levels in adipose tissue of mice. The PNPLA3 protein was expected at 50-70 kDa, as observed; the additional band at approximately 130-150 kDa is a oligomer bands. (PMID: 20385813, PMID: 24931521, PMID: 23023705)

Lagerung

Lagerungsbedingungen:
Bei -20°C lagern. Nach dem Versand ein Jahr lang stabil
Lagerungspuffer:
PBS mit 0.02% Natriumazid und 50% Glycerin pH 7.3.
Aliquotieren ist nicht notwendig bei -20°C Lagerung

*** 20ul-Größen enthalten 0.1% BSA

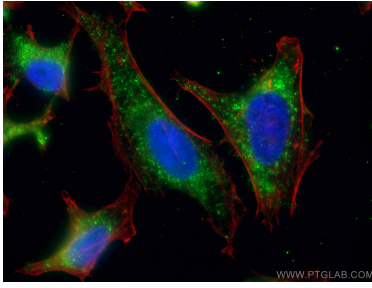
For technical support and original validation data for this product please contact:

T: 1 (888) 4PTGLAB (1-888-478-4522) (toll free
in USA), or 1(312) 455-8498 (outside USA)

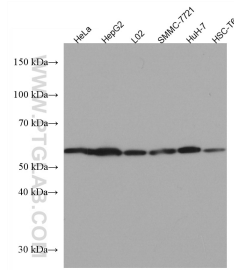
E: proteintech@ptglab.com
W: ptglab.com

This product is exclusively available under Proteintech Group brand and is not available to purchase from any other manufacturer.

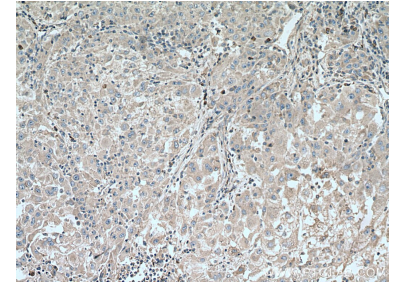
Ausgewählte Validierungsdaten



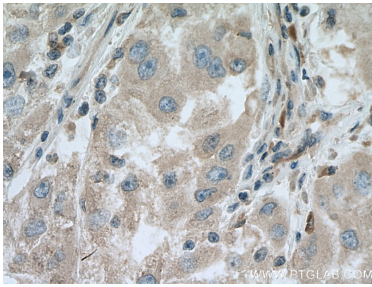
Immunofluorescent analysis of (4% PFA) fixed HeLa cells using PNPLA3 antibody (67369-1-Ig, Clone: 1D2B11) at dilution of 1:800 and CoraLite®488-Conjugated AffiniPure Goat Anti-Mouse IgG(H+L).



Various lysates were subjected to SDS PAGE followed by western blot with 67369-1-Ig (PNPLA3 antibody) at dilution of 1:3000 incubated at room temperature for 1.5 hours.



Immunohistochemical analysis of paraffin-embedded human liver cancer tissue slide using 67369-1-Ig (PNPLA3 antibody) at dilution of 1:500 (under 10x lens). Heat mediated antigen retrieval with Tris-EDTA buffer (pH 9.0).



Immunohistochemical analysis of paraffin-embedded human liver cancer tissue slide using 67369-1-Ig (PNPLA3 antibody) at dilution of 1:500 (under 40x lens). Heat mediated antigen retrieval with Tris-EDTA buffer (pH 9.0).