

Nur für Forschungszwecke

TUSC3 Monoklonaler Antikörper

Katalog-Nr.:67382-1-Ig

Vorgestelltes Produkt



Allgemeine Informationen

Katalog-Nr.:
67382-1-Ig

Größe:

150ul, Konzentration: 2300 µg/ml von7991

Nanodrop und 1000 µg/ml durch die
Bradford-Methode mit BSA als
Standard;

Wirt:

Maus

Isotyp:

IgG1

Immunogen Katalognummer:

AG9197

GenBank-Zugangsnummer:

BC010370

GeneID (NCBI):

7991

Vollständiger Name:

tumor suppressor candidate 3

Berechnete Masse:

347 aa, 40 kDa

Beobachtete Masse:

35 kDa

Reinigungsmethode:

Protein-G-Reinigung

CloneNo.:

1D3G12

Empfohlene Verdünnungen:

WB 1:1000-1:6000

Anwendungen

Geprüfte Anwendungen:

WB,ELISA

Getestete Reaktivität:

Human

Positivkontrollen:

WB : HeLa-Zellen, humanes Plazenta-Gewebe

Hintergrundinformationen

TUSC3 (tumor suppressor candidate 3), originally named N33, is a potential tumor suppressor gene. Decreased expression of TUSC3 has been found in various cancers, including prostate cancer, pancreas cancer and ovary cancer. TUSC3 also known as OST3A, is identified as a part of the oligosaccharyl-transferase (OST) complex and plays a crucial role in protein N-glycosylation. TUSC3 mutations have been found in families with non-syndromic autosomal recessive mental retardation.

Lagerung

Lagerungsbedingungen:

Bei -20°C lagern.

Lagerungspuffer:

PBS mit 0.02% Natriumazid und 50% Glycerin pH 7.3.

Aliquotieren ist nicht notwendig bei -20°C Lagerung

*** 20ul-Größen enthalten 0.1% BSA

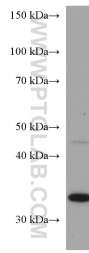
For technical support and original validation data for this product please contact:

T: 1 (888) 4PTGLAB (1-888-478-4522) (toll free
in USA), or 1(312) 455-8498 (outside USA)

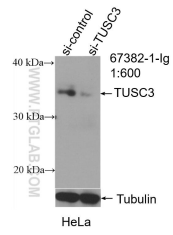
E: proteintech@ptglab.com
W: ptglab.com

This product is exclusively available under Proteintech Group brand and is not available to purchase from any other manufacturer.

Ausgewählte Validierungsdaten



HeLa cells were subjected to SDS PAGE followed by western blot with 67382-1-Ig (TUSC3 antibody) at dilution of 1:3000 incubated at room temperature for 1.5 hours.



WB result of TUSC3 antibody (67382-1-Ig; 1:600; incubated at room temperature for 1.5 hours) with sh-Control and sh-TUSC3 transfected HeLa cells.