

## Allgemeine Informationen

<b>Katalog-Nr.:</b> 67388-1-Ig	<b>GenBank-Zugangsnummer:</b> BC016727	<b>Reinigungsmethode:</b> Protein-G-Reinigung
<b>Größe:</b> 150ul , Konzentration: 2100 µg/ml von5771 Nanodrop und 1000 µg/ml durch die Bradford-Methode mit BSA als Standard;	<b>GeneID (NCBI):</b> 5771	<b>CloneNo.:</b> 2A1D1
<b>Wirt:</b> Maus	<b>Vollständiger Name:</b> protein tyrosine phosphatase, non- receptor type 2	<b>Empfohlene Verdünnungen:</b> WB 1:5000-1:50000 IHC 1:250-1:1000
<b>Isotyp:</b> IgG1	<b>Berechnete Masse:</b> 49 kDa	
<b>Immunogen Katalognummer:</b> AG29749	<b>Beobachtete Masse:</b> 45-50 kDa	

## Anwendungen

### Geprüfte Anwendungen:

IHC, WB, ELISA

### Getestete Reaktivität:

Human, Maus, Ratte

**Hinweis-IHC: Antigenmaskierung mit TE-Puffer pH 9,0 empfohlen. (\*) Wahlweise kann die Antigenmaskierung auch mit Citratpuffer pH 6,0 erfolgen.**

### Positivkontrollen:

**WB :** PC-3-Zellen, 4T1-Zellen, HEK-293T-Zellen, HeLa-Zellen, HepG2-Zellen, Jurkat-Zellen, K-562-Zellen, LNCaP-Zellen, MCF-7-Zellen, NIH/3T3-Zellen

**IHC :** humanes Mammakarzinomgewebe,

## Hintergrundinformationen

PTPN2(Tyrosine-protein phosphatase non-receptor type 2) is also named as PTPT and belongs to the protein-tyrosine phosphatase family. It may modulate beta-cell apoptosis and/or local release of inflammatory mediators in the course of a viral infection by acting, at least in part, at the pancreatic beta-cell level(PMID: 19825843). This protein has some isoforms produced by alternative splicing with the molecular mass of 40-50 kDa.

## Lagerung

### Lagerungsbedingungen:

Bei -20°C lagern.

### Lagerungspuffer:

PBS mit 0.02% Natriumazid und 50% Glycerin pH 7.3.

Aliquotieren ist nicht notwendig bei -20°C Lagerung

**\*\*\* 20ul-Größen enthalten 0.1% BSA**

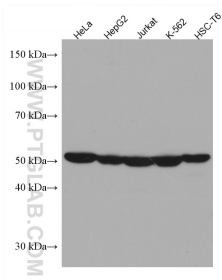
For technical support and original validation data for this product please contact:

T: 1 (888) 4PTGLAB (1-888-478-4522) (toll free in USA), or 1(312) 455-8498 (outside USA)

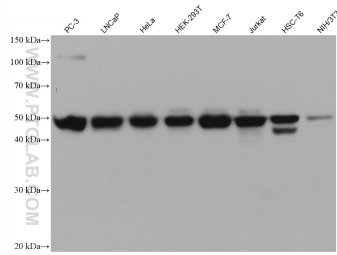
E: [proteintech@ptglab.com](mailto:proteintech@ptglab.com)  
W: [ptglab.com](http://ptglab.com)

**This product is exclusively available under Proteintech Group brand and is not available to purchase from any other manufacturer.**

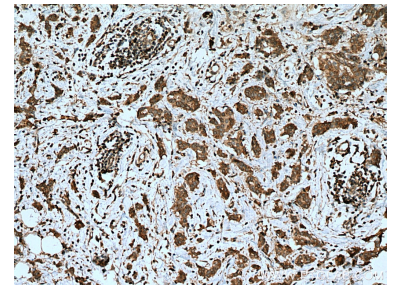
## Ausgewählte Validierungsdaten



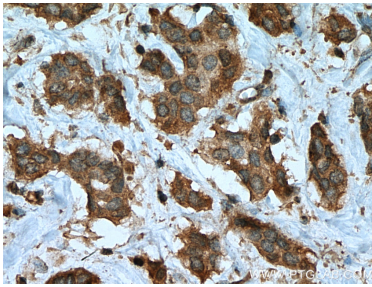
Various lysates were subjected to SDS PAGE followed by western blot with 67388-1-Ig (PTPN2 antibody) at dilution of 1:4000 incubated at room temperature for 1.5 hours.



Various lysates were subjected to SDS PAGE followed by western blot with 67388-1-Ig (PTPN2 antibody) at dilution of 1:10000 incubated at room temperature for 1.5 hours.



Immunohistochemical analysis of paraffin-embedded human breast cancer tissue slide using 67388-1-Ig (PTPN2 antibody) at dilution of 1:500 (under 10x lens). Heat mediated antigen retrieval with Tris-EDTA buffer (pH 9.0).



Immunohistochemical analysis of paraffin-embedded human breast cancer tissue slide using 67388-1-Ig (PTPN2 antibody) at dilution of 1:500 (under 40x lens). Heat mediated antigen retrieval with Tris-EDTA buffer (pH 9.0).