

Nur für Forschungszwecke

# ZG16 Monoklonaler Antikörper

Katalog-Nr.:67389-1-Ig



## Allgemeine Informationen

<b>Katalog-Nr.:</b> 67389-1-Ig	<b>GenBank-Zugangsnummer:</b> BC029149	<b>Reinigungsmethode:</b> Protein-A-Reinigung
<b>Größe:</b> 150ul, Konzentration: 2000 µg/ml von653808 Nanodrop und 1000 µg/ml durch die Bradford-Methode mit BSA als Standard;	<b>GeneID (NCBI):</b> von653808	<b>CloneNo.:</b> 1A7B9
<b>Wirt:</b> Maus	<b>Vollständiger Name:</b> zymogen granule protein 16 homolog (rat)	<b>Empfohlene Verdünnungen:</b> WB 1:2000-1:10000 IHC 1:250-1:1000 IF 1:200-1:800
<b>Isotyp:</b> IgG1	<b>Berechnete Masse:</b> 167 aa, 18 kDa	
<b>Immunogen Katalognummer:</b> AG11332	<b>Beobachtete Masse:</b> 16 kDa	

## Anwendungen

### Geprüfte Anwendungen:

IF, IHC, WB, ELISA

### Getestete Reaktivität:

Hausschwein, Human, Maus, Ratte

**Hinweis-IHC: Antigenmaskierung mit TE-Puffer pH 9,0 empfohlen. (\*) Wahlweise kann die Antigenmaskierung auch mit Citratpuffer pH 6,0 erfolgen.**

### Positivkontrollen:

**WB:** Maus-Kolongewebe, Hausschwein-Kolongewebe, humanes Kolongewebe

**IHC:** Maus-Pankreasgewebe,

**IF:** Maus-Dünndarmgewebe,

## Hintergrundinformationen

Zymogen granule protein 16 (ZG16) has a Jacalin-like lectin domain, which is mainly expressed by mucus-secreting cells, including goblet cells in the intestine. It's reported that ZG16 expression was significantly decreased in colorectal cancer compared to normal tissue. ZG16 gene expression and copy number variations (CNV) were associated with multiple molecular and clinicopathological features of CRC including MSI, MLH1 silencing and so on. It's found that ZG16 is negatively correlated with lymphatic invasive and distant metastasis. Besides, overexpression of ZG16 blocks PD-L1 expression in colorectal cancer, and promotes NK cells survival and proliferation. Very importantly, ZG16 suppresses colorectal tumor growth via the immune system. (PMID: 33360840, 21893569)

## Lagerung

### Lagerungsbedingungen:

Bei -20°C lagern. Nach dem Versand ein Jahr lang stabil

### Lagerungspuffer:

PBS mit 0.02% Natriumazid und 50% Glycerin pH 7.3.

Aliquotieren ist nicht notwendig bei -20°C Lagerung

\*\*\* 20ul-Größen enthalten 0.1% BSA

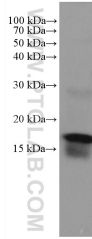
For technical support and original validation data for this product please contact:

T: 1 (888) 4PTGLAB (1-888-478-4522) (toll free in USA), or 1(312) 455-8498 (outside USA)

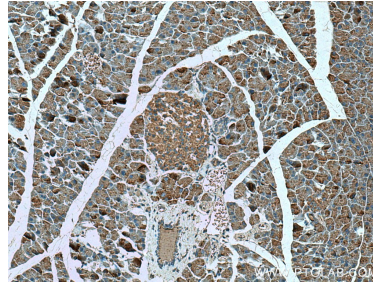
E: proteintech@ptglab.com  
W: ptglab.com

This product is exclusively available under Proteintech Group brand and is not available to purchase from any other manufacturer.

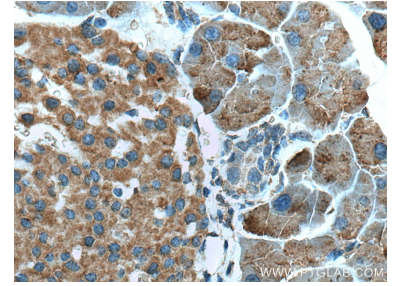
## Ausgewählte Validierungsdaten



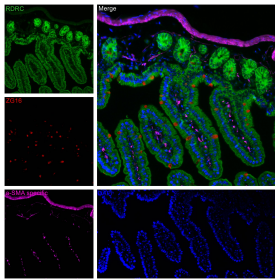
mouse colon tissue were subjected to SDS PAGE followed by western blot with 67389-1-Ig (ZG16 antibody) at dilution of 1:5000 incubated at room temperature for 1.5 hours.



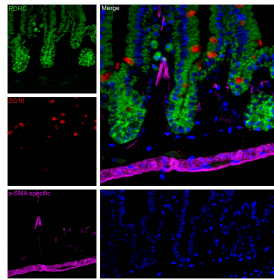
Immunohistochemical analysis of paraffin-embedded mouse pancreas tissue slide using 67389-1-Ig (ZG16 antibody) at dilution of 1:500 (under 10x lens). Heat mediated antigen retrieval with Tris-EDTA buffer (pH 9.0).



Immunohistochemical analysis of paraffin-embedded mouse pancreas tissue slide using 67389-1-Ig (ZG16 antibody) at dilution of 1:500 (under 40x lens). Heat mediated antigen retrieval with Tris-EDTA buffer (pH 9.0).



Immunofluorescent analysis of (4% PFA) fixed mouse small intestine tissue using ZG16 antibody (67389-1-Ig, Clone: 1A7B9) at dilution of 1:400 and CoraLite® 594-Conjugated AffiniPure Goat Anti-Mouse IgG(H+L), ASCT2 antibody (20350-1-AP, green), CoraLite® Plus 647 smooth muscle actin specific antibody (CL647-80008, Clone: 5H7, Magenta).



Immunofluorescent analysis of (4% PFA) fixed mouse small intestine tissue using ZG16 antibody (67389-1-Ig, Clone: 1A7B9) at dilution of 1:400 and CoraLite® 594-Conjugated AffiniPure Goat Anti-Mouse IgG(H+L), ASCT2 antibody (20350-1-AP, green), CoraLite® Plus 647 smooth muscle actin specific antibody (CL647-80008, Clone: 5H7, Magenta).