

Nur für Forschungszwecke

Profilin 1 Monoklonaler Antikörper

Katalog-Nr.:67390-1-Ig

Vorgestelltes Produkt

2 Publikationen



Allgemeine Informationen

Katalog-Nr.: 67390-1-Ig	GenBank-Zugangsnummer: BC006768	Reinigungsmethode: Protein-A-Reinigung
Größe: 150ul , Konzentration: 2300 µg/ml von5216 Nanodrop und 1000 µg/ml durch die Bradford-Methode mit BSA als Standard;	GeneID (NCBI): 5216	CloneNo.: 3A12E8
Wirt: Maus	Vollständiger Name: profilin 1	Empfohlene Verdünnungen: WB 1:5000-1:50000 IF 1:400-1:1600
Isotyp: IgG2b	Berechnete Masse: 140 aa, 15 kDa	
Immunogen Katalognummer: AG29206	Beobachtete Masse: 13 kDa	

Anwendungen

Geprüfte Anwendungen: IF, WB, ELISA	Positivkontrollen: WB : HSC-T6 cells, HEK-293-Zellen, HeLa-Zellen, Jurkat-Zellen, K-562-Zellen, LNCaP-Zellen, Neuro-2a- Zellen, NIH/3T3-Zellen, PC-12-Zellen
In Publikationen genannte Anwendungen: IF, WB	IF : HeLa-Zellen, HAP1 cells
Getestete Reaktivität: Human, Maus, Ratte	
Zitierte Arten: Human	

Hintergrundinformationen

Profilin-1 (PFN1) plays an important role in the control of actin dynamics, and could represent an important therapeutic target in several diseases. PFN1 is identified as a huntingtin aggregation inhibitor, and may serve as a tumor-suppressor. PFN1 is crucial for the conversion of monomeric (G)-actin to filamentous (F)-actin. Amyotrophic lateral sclerosis (ALS) is a late-onset neurodegenerative disorder resulting from motor neuron death. Cells expressing PFN1 mutants contain ubiquitinated, insoluble aggregates that in many cases contain the ALS-associated protein TDP-43. Recently, PFN1 is a potential biomarker for bladder cancer aggressiveness and may be of great clinical importance.

Bemerkenswerte Veröffentlichungen

Verfasser	Pubmed ID	Journal	Anwendung
Yutaka Ogawa	34934922	iScience	WB,IF
Nan Zhang	36822595	Cell Prolif	IF

Lagerung

Lagerungsbedingungen:
Bei -20°C lagern. Nach dem Versand ein Jahr lang stabil
Lagerungspuffer:
PBS mit 0.02% Natriumazid und 50% Glycerin pH 7.3.
Aliquotieren ist nicht notwendig bei -20°C Lagerung

*** 20ul-Größen enthalten 0.1% BSA

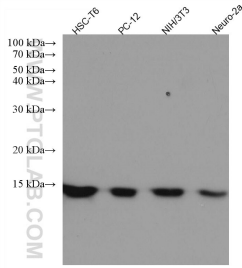
For technical support and original validation data for this product please contact:

T: 1 (888) 4PTGLAB (1-888-478-4522) (toll free
in USA), or 1(312) 455-8498 (outside USA)

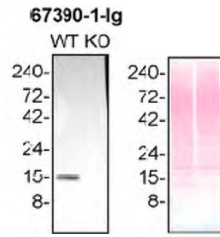
E: proteintech@ptglab.com
W: ptglab.com

This product is exclusively available under Proteintech Group brand and is not available to purchase from any other manufacturer.

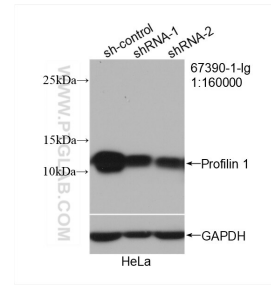
Ausgewählte Validierungsdaten



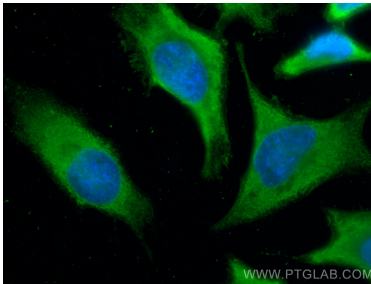
Various lysates were subjected to SDS PAGE followed by western blot with 67390-1-Ig (Profilin 1 antibody) at dilution of 1:20000 incubated at room temperature for 1.5 hours.



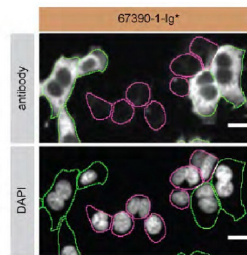
HAP1 (WT and PFN1 KO) lysates prepared with NP-40 buffer, 50 µg protein loaded. 67390-1-Ig incubated at 1:30,000 at 4°C overnight in 5% milk in TBST. Ponceau stained transfers shown on right. Data provided by YCharOS, an open science company with a mission to validate commercial antibodies to improve scientific reproducibility and transparency.



WB result of Profilin 1 antibody (67390-1-Ig; 1:160000; incubated at room temperature for 1.5 hours) with sh-Control and sh-Profilin 1 transfected HeLa cells.



Immunofluorescent analysis of (-20°C Methanol) fixed HeLa cells using Profilin 1 antibody (67390-1-Ig, Clone: 3A12E8) at dilution of 1:800 and CoraLite®488-Conjugated AffiniPure Goat Anti-Mouse IgG(H+L).



HAP1 WT cells (green outline) and PFN1 KO cells (magenta outline) labelled with a green or a far-red fluorescence dye, respectively. Cells with 4% PFA and stained with 67390-1-Ig at 1.0 µg/ml plus DAPI. Bars = 10 µm. Data provided by YCharOS, an open science company with a mission to validate commercial antibodies to improve scientific reproducibility and transparency.