

Nur für Forschungszwecke

FGL1 Monoklonaler Antikörper

Katalog-Nr.: 67391-1-Ig **1 Publikationen**



Allgemeine Informationen

Katalog-Nr.: 67391-1-Ig	GenBank-Zugangsnummer: BC007047	Reinigungsmethode: Protein-G-Reinigung
Größe: 150ul, Konzentration: 2569 µg/ml von 2267 Nanodrop und 913 µg/ml durch die Bradford-Methode mit BSA als Standard;	GeneID (NCBI): vollständiger Name: fibrinogen-like 1	CloneNo.: 2B11C6
Wirt: Maus	Berechnete Masse: 312 aa, 36 kDa	Empfohlene Verdünnungen: WB 1:1000-1:5400 IHC 1:500-1:2000 IF 1:200-1:800
Isotyp: IgG1	Beobachtete Masse: 36 kDa	
Immunogen Katalognummer: AG8581		

Anwendungen

Geprüfte Anwendungen: FC, IF, IHC, WB, ELISA	Positivkontrollen: WB: Hausschwein-Lebergewebe, humanes Plazenta-Gewebe IHC: humanes Lebergewebe, humanes Leberkarzinomgewebe, humanes Lungengewebe IF: HepG2-Zellen,
In Publikationen genannte Anwendungen: WB	
Getestete Reaktivität: Hausschwein, Human	
Zitierte Arten: Maus	
Hinweis-IHC: Antigendemaskierung mit TE-Puffer pH 9,0 empfohlen. (*) Wahlweise kann die Antigendemaskierung auch mit Citratpuffer pH 6,0 erfolgen.	

Hintergrundinformationen

Fibrinogen-like 1 (FGL1), also termed hepatocyte-derived fibrinogen-related protein 1 (HFREP1) or hepassocin, is a predominantly liver expressed protein that has been implicated as both a hepatoprotectant and a hepatocyte mitogen. FGL1 expression is decreased in hepatocellular carcinoma (HCC), and it may play a role in the development of hepatocellular carcinomas.

Bemerkenswerte Veröffentlichungen

Verfasser	Pubmed ID	Journal	Anwendung
Dafei Chai	34977338	Mol Ther Oncolytics	WB

Lagerung

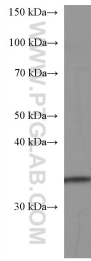
Lagerungsbedingungen:
Bei -20°C lagern.
Lagerungspuffer:
PBS mit 0.02% Natriumazid und 50% Glycerin pH 7.3.
Aliquotieren ist nicht notwendig bei -20°C Lagerung

*** 20ul-Größen enthalten 0.1% BSA

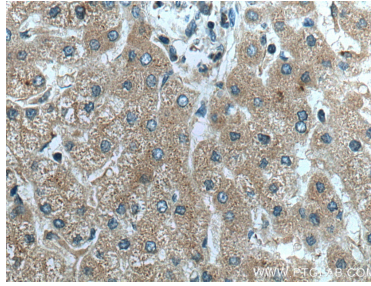
For technical support and original validation data for this product please contact:
T: 1 (888) 4PTGLAB (1-888-478-4522) (toll free in USA), or 1(312) 455-8498 (outside USA)
E: proteintech@ptglab.com
W: ptglab.com

This product is exclusively available under Proteintech Group brand and is not available to purchase from any other manufacturer.

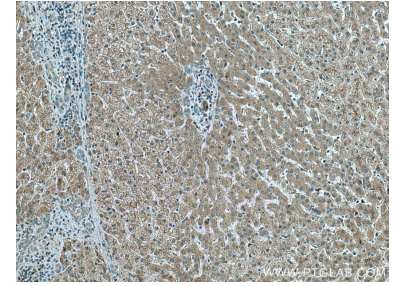
Ausgewählte Validierungsdaten



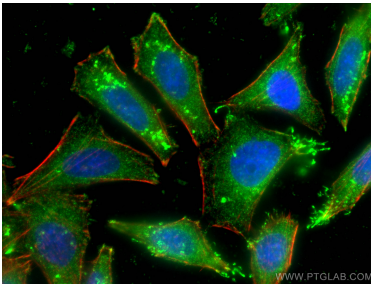
pig liver tissue were subjected to SDS PAGE followed by western blot with 67391-1-Ig (FGL1 antibody) at dilution of 1:2700 incubated at room temperature for 1.5 hours.



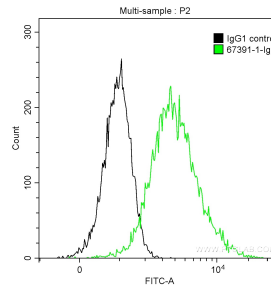
Immunohistochemical analysis of paraffin-embedded human liver tissue slide using 67391-1-Ig (FGL1 antibody) at dilution of 1:1000 (under 40x lens). Heat mediated antigen retrieval with Tris-EDTA buffer (pH 9.0).



Immunohistochemical analysis of paraffin-embedded human liver tissue slide using 67391-1-Ig (FGL1 antibody) at dilution of 1:1000 (under 10x lens). Heat mediated antigen retrieval with Tris-EDTA buffer (pH 9.0).



Immunofluorescent analysis of (-20°C Ethanol) fixed HepG2 cells using FGL1 antibody (67391-1-Ig, Clone: 2B11C6) at dilution of 1:400 and CoraLite@488-Conjugated AffiniPure Goat Anti-Mouse IgG(H+L), CL594-Phalloidin (red).



1X10⁶ HepG2 cells were intracellularly stained with 0.2 ug Anti-Human FGL1 (67391-1-Ig, Clone:2B11C6) and CoraLite@488-Conjugated AffiniPure Goat Anti-Mouse IgG(H+L) at dilution 1:1000 (green), and 0.2 ug Mouse IgG1 Isotype Control (66360-1-Ig, Clone: T1F8D3F10) (black). Cells were fixed with 4% PFA and permeabilized with 0.1% TritonX-100.