

Nur für Forschungszwecke

PPP4R1 Monoklonaler Antikörper

Katalog-Nr.:67392-1-Ig



Allgemeine Informationen

Katalog-Nr.: 67392-1-Ig	GenBank-Zugangsnummer: BC060829	Reinigungsmethode: Protein-G-Reinigung
Größe: 150ul, Konzentration: 1800 µg/ml von 9989 Nanodrop und 1000 µg/ml durch die Bradford-Methode mit BSA als Standard;	GeneID (NCBI): protein phosphatase 4, regulatory subunit 1	CloneNo.: 3D12G12
Wirt: Maus	Berechnete Masse: 107 kDa	Empfohlene Verdünnungen: WB 1:2000-1:6000 IHC 1:250-1:1000 IF 1:200-1:800
Isotyp: IgG1	Beobachtete Masse: 120-130 kDa	
Immunogen Katalognummer: AG26750		

Anwendungen

Geprüfte Anwendungen:

FC, IF, IHC, WB, ELISA

Getestete Reaktivität:

Human, Maus, Ratte

Hinweis-IHC: Antigenmaskierung mit TE-Puffer pH 9,0 empfohlen. (*) Wahlweise kann die Antigenmaskierung auch mit Citratpuffer pH 6,0 erfolgen.

Positivkontrollen:

WB : HeLa-Zellen, HEK-293-Zellen, Jurkat-Zellen

IHC : humanes Leberkarzinomgewebe,

IF : humanes Leberkarzinomgewebe,

Hintergrundinformationen

Lagerung

Lagerungsbedingungen:

Bei -20°C lagern. Nach dem Versand ein Jahr lang stabil

Lagerungspuffer:

PBS mit 0.02% Natriumazid und 50% Glycerin pH 7.3.

Aliquotieren ist nicht notwendig bei -20°C Lagerung

***** 20ul-Größen enthalten 0.1% BSA**

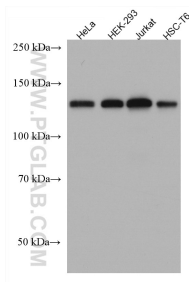
For technical support and original validation data for this product please contact:

T: 1 (888) 4PTGLAB (1-888-478-4522) (toll free
in USA), or 1(312) 455-8498 (outside USA)

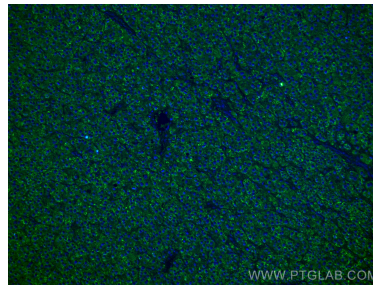
E: proteintech@ptglab.com
W: ptglab.com

This product is exclusively available under Proteintech Group brand and is not available to purchase from any other manufacturer.

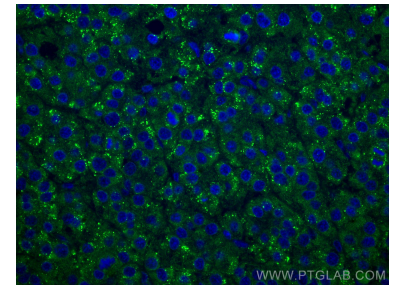
Ausgewählte Validierungsdaten



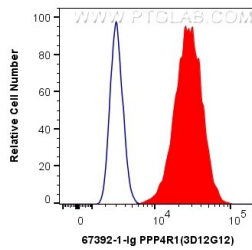
Various lysates were subjected to SDS PAGE followed by western blot with 67392-1-Ig (PPP4R1 antibody) at dilution of 1:3000 incubated at room temperature for 1.5 hours.



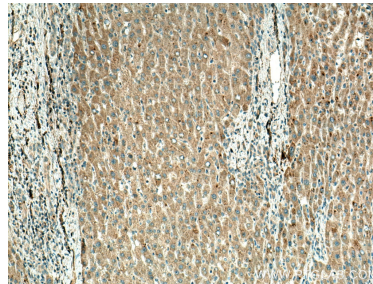
Immunofluorescent analysis of (4% PFA) fixed human liver cancer tissue using PPP4R1 antibody (67392-1-Ig, Clone: 3D12G12) at dilution of 1:400 and CoraLite®488-Conjugated AffiniPure Goat Anti-Mouse IgG(H+L).



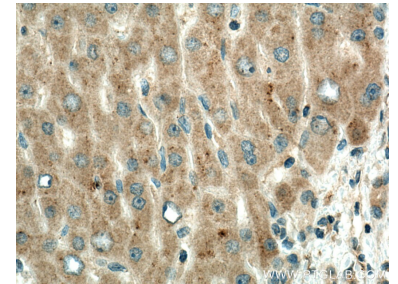
Immunofluorescent analysis of (4% PFA) fixed human liver cancer tissue using PPP4R1 antibody (67392-1-Ig, Clone: 3D12G12) at dilution of 1:400 and CoraLite®488-Conjugated AffiniPure Goat Anti-Mouse IgG(H+L).



1×10^6 HeLa cells were intracellularly stained with 0.4 ug Anti-Human PPP4R1 (67392-1-Ig, Clone:3D12G12) and CoraLite®488-Conjugated AffiniPure Goat Anti-Mouse IgG(H+L) at dilution 1:1000 (red), or 0.4 ug Control Antibody. Cells were fixed with 4% PFA and permeabilized with Flow Cytometry Perm Buffer (PF00011-C).



Immunohistochemical analysis of paraffin-embedded human liver cancer tissue slide using 67392-1-Ig (PPP4R1 antibody) at dilution of 1:500 (under 10x lens). Heat mediated antigen retrieval with Tris-EDTA buffer (pH 9.0).



Immunohistochemical analysis of paraffin-embedded human liver cancer tissue slide using 67392-1-Ig (PPP4R1 antibody) at dilution of 1:500 (under 40x lens). Heat mediated antigen retrieval with Tris-EDTA buffer (pH 9.0).