

Nur für Forschungszwecke

# VEGFR2 Monoklonaler Antikörper

Katalog-Nr.: 67407-1-Ig **4 Publikationen**



## Allgemeine Informationen

<b>Katalog-Nr.:</b> 67407-1-Ig	<b>GenBank-Zugangsnummer:</b> BC131822	<b>Reinigungsmethode:</b> Protein-G-Reinigung
<b>Größe:</b> 150ul, Konzentration: 2100 µg/ml von 3791 Nanodrop und 1000 µg/ml durch die Bradford-Methode mit BSA als Standard;	<b>GeneID (NCBI):</b> 3791	<b>CloneNo.:</b> 1G2A8
<b>Wirt:</b> Maus	<b>Vollständiger Name:</b> kinase insert domain receptor (a type III receptor tyrosine kinase)	<b>Empfohlene Verdünnungen:</b> WB 1:1000-1:8000
<b>Isotyp:</b> IgG1	<b>Berechnete Masse:</b> 1356 aa, 152 kDa	
<b>Immunogen Katalognummer:</b> AG24589	<b>Beobachtete Masse:</b> 230 kDa	

## Anwendungen

<b>Geprüfte Anwendungen:</b> FC, WB, ELISA	<b>Positivkontrollen:</b> WB: humanes Plazenta-Gewebe,
<b>In Publikationen genannte Anwendungen:</b> IF, IHC, WB	
<b>Getestete Reaktivität:</b> Human	
<b>Zitierte Arten:</b> Human	

## Hintergrundinformationen

KDR, also named as VEGFR-2, FLK1 and CD309, is a receptor for VEGF or VEGFC. KDR which belongs to the protein kinase superfamily, has a tyrosine-protein kinase activity. The VEGF-kinase ligand/receptor signaling system plays a key role in vascular development and regulation of vascular permeability. In case of HIV-1 infection, the interaction with extracellular viral Tat protein seems to enhance angiogenesis in Kaposi's sarcoma lesions. KDR functions as the main mediator of VEGF-induced endothelial proliferation, survival, migration, tubular morphogenesis and sprouting. Mutations of this gene are implicated in infantile capillary hemangiomas.

## Bemerkenswerte Veröffentlichungen

Verfasser	Pubmed ID	Journal	Anwendung
Xiaofeng Dai	31636652	Front Genet	WB
Hongwei Jin	34150622	Front Oncol	WB
Hou-Fu Xia	35916917	Cell Tissue Res	IHC, IF

## Lagerung

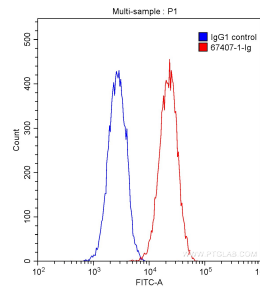
**Lagerungsbedingungen:**  
Bei -20°C lagern.  
**Lagerungspuffer:**  
PBS mit 0.02% Natriumazid und 50% Glycerin pH 7.3.  
Aliquotieren ist nicht notwendig bei -20°C Lagerung

\*\*\* 20ul-Größen enthalten 0.1% BSA

For technical support and original validation data for this product please contact:  
T: 1 (888) 4PTGLAB (1-888-478-4522) (toll free in USA), or 1(312) 455-8498 (outside USA)  
E: proteintech@ptglab.com  
W: ptglab.com

This product is exclusively available under Proteintech Group brand and is not available to purchase from any other manufacturer.

## Ausgewählte Validierungsdaten



human placenta tissue were subjected to SDS PAGE followed by western blot with 67407-1-Ig (VEGFR2 antibody) at dilution of 1:4000 incubated at room temperature for 1.5 hours.

$1 \times 10^6$  HUVEC cells were intracellularly stained with 0.20 ug/test Anti-Human VEGFR2 (67407-1-Ig, Clone:1G2A8) (red) or 0.20 ug Mouse IgG1 Isotype Control(66360-1-Ig, CloneT1F8D3F10) (blue) and CoraLite®488-Conjugated AffiniPure Goat Anti-Mouse IgG(H+L) with dilution 1:1000. Fixed with 90% MeOH.