

Nur für Forschungszwecke

ERO1L Monoklonaler Antikörper

Katalog-Nr.:67416-1-Ig

Vorgestelltes Produkt

1 Publikationen



Allgemeine Informationen

Katalog-Nr.: 67416-1-Ig	GenBank-Zugangsnummer: BC008674	Reinigungsmethode: Protein-A-Reinigung
Größe: 150ul , Konzentration: 1800 µg/ml von30001 Nanodrop und 1000 µg/ml durch die Bradford-Methode mit BSA als Standard;	GeneID (NCBI): ERO1-like (S. cerevisiae)	CloneNo.: 1G12E11
Wirt: Maus	Vollständiger Name: ERO1-like (S. cerevisiae)	Empfohlene Verdünnungen: WB 1:5000-1:50000 IHC 1:500-1:2000 IF 1:200-1:800
Isotyp: IgG2b	Berechnete Masse: 468 aa, 54 kDa	
Immunogen Katalognummer: AG29910	Beobachtete Masse: 54 kDa	

Anwendungen

Geprüfte Anwendungen: IF, IHC, WB,ELISA	Positivkontrollen: WB : HeLa-Zellen, 4T1-Zellen, HEK-293-Zellen, HepG2-Zellen, Jurkat-Zellen, NIH/3T3-Zellen
In Publikationen genannte Anwendungen: WB	IHC : humanes Pankreaskarzinomgewebe, humanes Magenkrebsgewebe
Getestete Reaktivität: Human, Maus, Ratte	IF : HEK-293-Zellen, humanes Magenkrebsgewebe
Zitierte Arten: Maus	
Hinweis-IHC: Antigenmaskierung mit TE-Puffer pH 9,0 empfohlen. (*) Wahlweise kann die Antigenmaskierung auch mit Citratpuffer pH 6,0 erfolgen.	

Hintergrundinformationen

ERO1L, also named as ERO1-alpha, is an essential oxidoreductase that oxidizes proteins in the endoplasmic reticulum to produce disulfide bonds. It acts by oxidizing directly P4HB/PDI isomerase through a direct disulfide exchange. It does not act as a direct oxidant of folding substrate, but relies on P4HB/PDI to transfer oxidizing equivalent. Associates with ERP44 but not with GRP54, demonstrating that it does not oxidize all PDI related proteins and can discriminate between PDI and related proteins. Its reoxidation probably involves electron transfer to molecular oxygen via FAD. Glutathione may be required to regulate its activity in the endoplasmic reticulum. It may be responsible for a significant proportion of reactive oxygen species (ROS) in the cell, thereby being a source of oxidative stress. It is required for the folding of immunoglobulin proteins. Responsible for the release of the unfolded cholera toxin from reduced P4HB/PDI in case of infection by V.cholerae, thereby playing a role in retrotranslocation of the toxin. ERO1L has a calculated molecular weight of 54 kDa and can be detected as 60kDa.

Bemerkenswerte Veröffentlichungen

Verfasser	Pubmed ID	Journal	Anwendung
Qian Guo	37153733	Theranostics	WB

Lagerung

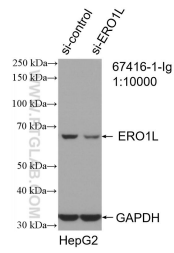
Lagerungsbedingungen:
Bei -20°C lagern.
Lagerungspuffer:
PBS mit 0.02% Natriumazid und 50% Glycerin pH 7.3.
Aliquotieren ist nicht notwendig bei -20°C Lagerung

*** 20ul-Größen enthalten 0.1% BSA

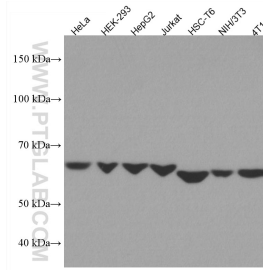
For technical support and original validation data for this product please contact:
T: 1 (888) 4PTGLAB (1-888-478-4522) (toll free in USA), or 1(312) 455-8498 (outside USA)
E: proteintech@ptglab.com
W: ptglab.com

This product is exclusively available under Proteintech Group brand and is not available to purchase from any other manufacturer.

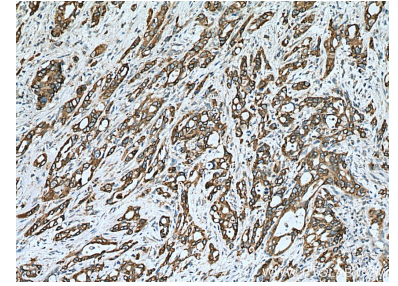
Ausgewählte Validierungsdaten



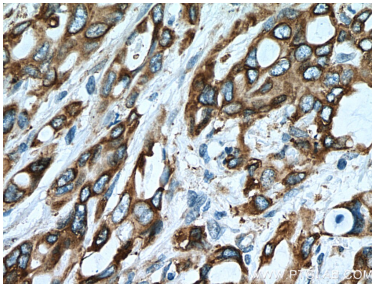
WB result of ERO1L antibody (67416-1-Ig; 1:10000; incubated at room temperature for 1.5 hours) with sh-Control and sh-ERO1L transfected HepG2 cells.



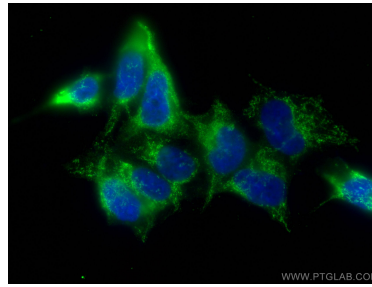
Various lysates were subjected to SDS PAGE followed by western blot with 67416-1-Ig (ERO1L antibody) at dilution of 1:10000 incubated at room temperature for 1.5 hours.



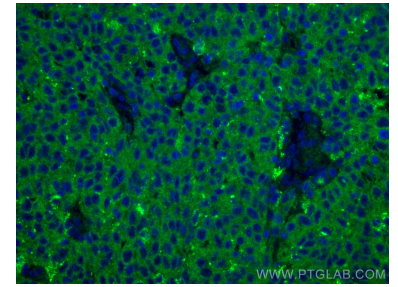
Immunohistochemical analysis of paraffin-embedded human pancreas cancer tissue slide using 67416-1-Ig (ERO1L antibody) at dilution of 1:1000 (under 10x lens). Heat mediated antigen retrieval with Tris-EDTA buffer (pH 9.0).



Immunohistochemical analysis of paraffin-embedded human pancreas cancer tissue slide using 67416-1-Ig (ERO1L antibody) at dilution of 1:1000 (under 40x lens). Heat mediated antigen retrieval with Tris-EDTA buffer (pH 9.0).



Immunofluorescent analysis of (4% PFA) fixed HEK-293 cells using ERO1L antibody (67416-1-Ig, Clone: 1G12E11) at dilution of 1:400 and CoraLite®488-Conjugated AffiniPure Goat Anti-Mouse IgG(H+L).



Immunofluorescent analysis of (4% PFA) fixed human stomach cancer tissue using ERO1L antibody (67416-1-Ig, Clone: 1G12E11) at dilution of 1:400 and CoraLite®488-Conjugated AffiniPure Goat Anti-Mouse IgG(H+L).