

Nur für Forschungszwecke

CYP2W1 Monoklonaler Antikörper

Katalog-Nr.:67419-1-Ig

Vorgestelltes Produkt



Allgemeine Informationen

Katalog-Nr.: 67419-1-Ig	GenBank-Zugangsnummer: BC025761	Reinigungsmethode: Protein-G-Reinigung
Größe: 150ul, Konzentration: 2000 µg/ml von54905 Nanodrop;	GeneID (NCBI): 54905	CloneNo.: 2B10H2
Wirt: Maus	Vollständiger Name: cytochrome P450, family 2, subfamily WB 1:5000-1:30000 W, polypeptide 1	Empfohlene Verdünnungen:
Isotyp: IgG1	Berechnete Masse: 54 kDa	
Immunogen Katalognummer: AG29982	Beobachtete Masse: 45-54 kDa	

Anwendungen

Geprüfte Anwendungen:
WB, ELISA

Getestete Reaktivität:
Human, Maus, Ratte

Positivkontrollen:

WB: HeLa-Zellen, HEK-293-Zellen, HepG2-Zellen,
Jurkat-Zellen, NIH/3T3-Zellen, RAW 264.7-Zellen

Hintergrundinformationen

Cytochrome P450s have been proposed to be of importance both in carcinogenesis, by activating precarcinogens, and as determinants of cancer chemotherapy, where they participate in activation or inactivation of anti-cancer drugs. CYP2W1 is exclusively expressed in transformed tissue in the adult human, mainly in colon tumors. It is a potential drug target in cancer therapy. CYP2W1 has a molecular weight of 52-54 kDa, and 30/45 kDa of potential isoforms.

Lagerung

Lagerungsbedingungen:
Bei -20°C lagern. Nach dem Versand ein Jahr lang stabil

Lagerungspuffer:
PBS mit 0.02% Natriumazid und 50% Glycerin pH 7.3.

Aliquotieren ist nicht notwendig bei -20°C Lagerung

***** 20ul-Größen enthalten 0.1% BSA**

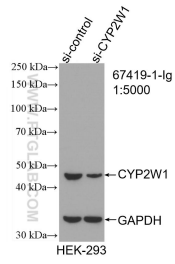
For technical support and original validation data for this product please contact:

T: 1 (888) 4PTGLAB (1-888-478-4522) (toll free
in USA), or 1(312) 455-8498 (outside USA)

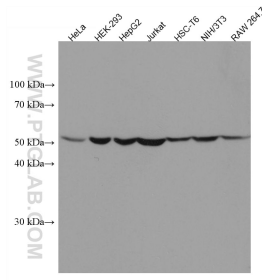
E: proteintech@ptglab.com
W: ptglab.com

This product is exclusively available under Proteintech Group brand and is not available to purchase from any other manufacturer.

Ausgewählte Validierungsdaten



WB result of CYP2W1 antibody (67419-1-Ig; 1:5000; incubated at room temperature for 1.5 hours) with sh-Control and sh-CYP2W1 transfected HEK-293 cells.



Various lysates were subjected to SDS PAGE followed by western blot with 67419-1-Ig (CYP2W1 antibody) at dilution of 1:10000 incubated at room temperature for 1.5 hours.