

Allgemeine Informationen

Katalog-Nr.: 67425-1-Ig	GenBank-Zugangsnummer: BC007830	Reinigungsmethode: Protein-G-Reinigung
Größe: 150ul , Konzentration: 1700 µg/ml von25813 Nanodrop und 1000 µg/ml durch die Bradford-Methode mit BSA als Standard;	GeneID (NCBI): 25813	CloneNo.: 2H6H9
Wirt: Maus	Vollständiger Name: sorting and assembly machinery component 50 homolog (S. cerevisiae)	Empfohlene Verdünnungen: WB 1:1000-1:6000 IHC 1:50-1:500 IF 1:200-1:800
Isotyp: IgG1	Berechnete Masse: 469 aa, 52 kDa	
Immunogen Katalognummer: AG15155	Beobachtete Masse: 52 kDa	

Anwendungen

Geprüfte Anwendungen: IF, IHC, WB,ELISA	Positivkontrollen:
Getestete Reaktivität: Hausschwein, Human, Maus, Ratte	WB : Hausschwein-Herzgewebe, NIH/3T3-Zellen, Rattenherzgewebe
Hinweis-IHC: Antigenmaskierung mit TE- Puffer pH 9,0 empfohlen. (*) Wahlweise kann die Antigenmaskierung auch mit Citratpuffer pH 6,0 erfolgen.	IHC : humanes Leberkarzinomgewebe, humanes Herzgewebe
	IF : HeLa-Zellen, HepG2-Zellen

Hintergrundinformationen

Sam50, encoded by the SAMM50 gene, is an essential protein of the mitochondrial outer membrane (OMM). It contains a beta-barrel domain conserved from bacteria to man (PMID: 14570913). Sam50 is a part of the sorting and assembly machinery (SAM) necessary for the assembly of beta-barrel proteins in the OMM (PMID: 22252321). It is crucial for maintaining mitochondrial shape, morphology of mitochondrial cristae, and assembly of the mitochondrial respiratory chain complexes (PMID: 26587038; 22252321; 25781180). Polymorphisms in the SAMM50 gene have been associated with development and progression of nonalcoholic fatty liver disease (PMID: 23535911).

Lagerung

Lagerungsbedingungen:
Bei -20°C lagern.
Lagerungspuffer:
PBS mit 0.02% Natriumazid und 50% Glycerin pH 7.3.
Aliquotieren ist nicht notwendig bei -20°C Lagerung

***** 20ul-Größen enthalten 0.1% BSA**

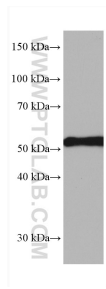
For technical support and original validation data for this product please contact:

T: 1 (888) 4PTGLAB (1-888-478-4522) (toll free
in USA), or 1(312) 455-8498 (outside USA)

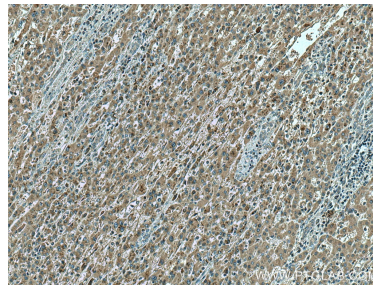
E: proteintech@ptglab.com
W: ptglab.com

**This product is exclusively available under Proteintech
Group brand and is not available to purchase from any
other manufacturer.**

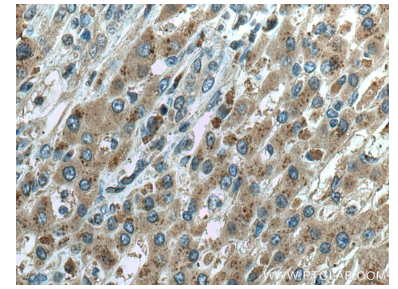
Ausgewählte Validierungsdaten



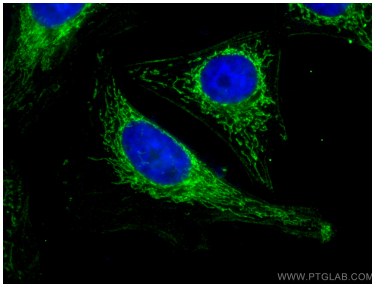
pig heart tissue were subjected to SDS PAGE followed by western blot with 67425-1-Ig (Sam50 antibody) at dilution of 1:3000 incubated at room temperature for 1.5 hours.



Immunohistochemical analysis of paraffin-embedded human liver cancer tissue slide using 67425-1-Ig (SAMM50 antibody) at dilution of 1:200 (under 10x lens). Heat mediated antigen retrieval with Tris-EDTA buffer (pH 9.0).



Immunohistochemical analysis of paraffin-embedded human liver cancer tissue slide using 67425-1-Ig (SAMM50 antibody) at dilution of 1:200 (under 40x lens). Heat mediated antigen retrieval with Tris-EDTA buffer (pH 9.0).



Immunofluorescent analysis of (4% PFA) fixed HeLa cells using Sam50 antibody (67425-1-Ig, Clone: 2H6H9) at dilution of 1:400 and CoraLite®488-Conjugated AffiniPure Goat Anti-Mouse IgG(H+L), CL594-Phalloidin (red).