

Allgemeine Informationen

Katalog-Nr.: 67427-1-Ig	GenBank-Zugangsnummer: BC022068	Reinigungsmethode: Protein-G-Reinigung
Größe: 150ul, Konzentration: 2000 µg/ml von 11012 Nanodrop und 1000 µg/ml durch die Bradford-Methode mit BSA als Standard;	GeneID (NCBI): 11012	CloneNo.: 1E2B4
Wirt: Maus	Vollständiger Name: kallikrein-related peptidase 11	Empfohlene Verdünnungen: WB 1:1000-1:6000 IHC 1:500-1:2000 IF 1:200-1:800
Isotyp: IgG1	Berechnete Masse: 250 aa, 27 kDa	
Immunogen Katalognummer: AG29895	Beobachtete Masse: 30-40 kDa	

Anwendungen

Geprüfte Anwendungen: IF, IHC, WB, ELISA	Positivkontrollen: WB: DU 145-Zellen, Hausschwein-Hirngewebe, Jurkat-Zellen, LNCaP-Zellen, PC-3-Zellen, Rattenhirngewebe IHC: humanes Mammakarzinomgewebe, humanes Prostatakarzinomgewebe IF: humanes Mammakarzinomgewebe,
In Publikationen genannte Anwendungen: WB	
Getestete Reaktivität: Hausschwein, Human, Ratte	
Zitierte Arten: Human	
Hinweis-IHC: Antigenmaskierung mit TE-Puffer pH 9,0 empfohlen. (*) Wahlweise kann die Antigenmaskierung auch mit Citratpuffer pH 6,0 erfolgen.	

Hintergrundinformationen

KLK11(Kallikrein-11) is also named as PRSS20, TLSP and belongs to the peptidase S1 family and Kallikrein subfamily. It is a multifunctional protease cleaving several substrates for kallikrein and trypsin and involved in normal physiology processes in bronchus. This full length protein has a signal peptide, a propeptide and four glycosylation sites. It has 4 isoforms produced by alternative splicing with the molecular weight of 31 kDa, 27 kDa, 34 kDa and 30 kDa.

Bemerkenswerte Veröffentlichungen

Verfasser	Pubmed ID	Journal	Anwendung
Ruimin Zhao	33420975	J Bioenerg Biomembr	WB

Lagerung

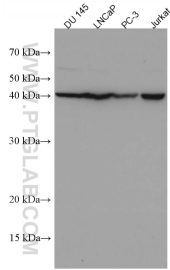
Lagerungsbedingungen:
Bei -20°C lagern.
Lagerungspuffer:
PBS mit 0.02% Natriumazid und 50% Glycerin pH 7.3.
Aliquotieren ist nicht notwendig bei -20°C Lagerung

***** 20ul-Größen enthalten 0.1% BSA**

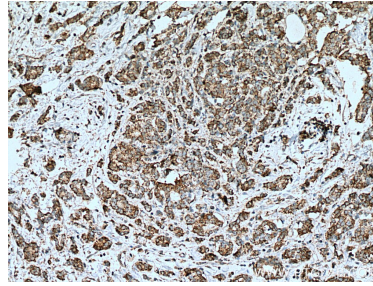
For technical support and original validation data for this product please contact:
T: 1 (888) 4PTGLAB (1-888-478-4522) (toll free in USA), or 1(312) 455-8498 (outside USA)
E: proteintech@ptglab.com
W: ptglab.com

This product is exclusively available under Proteintech Group brand and is not available to purchase from any other manufacturer.

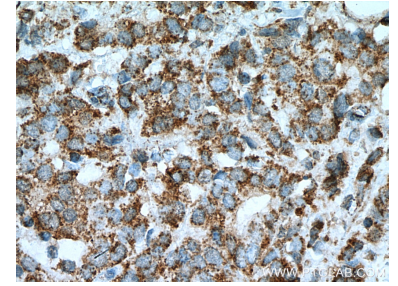
Ausgewählte Validierungsdaten



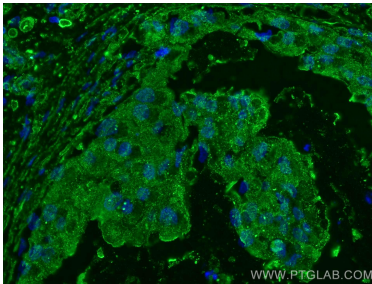
Various lysates were subjected to SDS PAGE followed by western blot with 67427-1-Ig (KLK11 antibody) at dilution of 1:3000 incubated at room temperature for 1.5 hours.



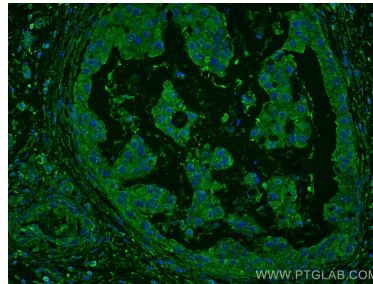
Immunohistochemical analysis of paraffin-embedded human breast cancer tissue slide using 67427-1-Ig (KLK11 antibody) at dilution of 1:1000 (under 10x lens). Heat mediated antigen retrieval with Tris-EDTA buffer (pH 9.0).



Immunohistochemical analysis of paraffin-embedded human breast cancer tissue slide using 67427-1-Ig (KLK11 antibody) at dilution of 1:1000 (under 40x lens). Heat mediated antigen retrieval with Tris-EDTA buffer (pH 9.0).



Immunofluorescent analysis of (4% PFA) fixed human breast cancer tissue using KLK11 antibody (67427-1-Ig, Clone: 1E2B4) at dilution of 1:400 and CoraLite@488-Conjugated AffiniPure Goat Anti-Mouse IgG(H+L).



Immunofluorescent analysis of (4% PFA) fixed human breast cancer tissue using KLK11 antibody (67427-1-Ig, Clone: 1E2B4) at dilution of 1:400 and CoraLite@488-Conjugated AffiniPure Goat Anti-Mouse IgG(H+L).