

Nur für Forschungszwecke

CYP20A1 Monoklonaler Antikörper

Katalog-Nr.:67433-1-Ig



Allgemeine Informationen

Katalog-Nr.: 67433-1-Ig	GenBank-Zugangsnummer: BC020616	Reinigungsmethode: Protein-G-Reinigung
Größe: 150ul , Konzentration: 500 µg/ml durch die Bradford-Methode mit BSA als Standard;	GeneID (NCBI): 57404	CloneNo.: 2A9E2
Wirt: Maus	Vollständiger Name: cytochrome P450, family 20, subfamily A, polypeptide 1	Empfohlene Verdünnungen: WB 1:5000-1:50000 IHC 1:250-1:1000 IF 1:200-1:800
Isotyp: IgG1	Berechnete Masse: 462 aa, 52 kDa	
Immunogen Katalognummer: AG9715	Beobachtete Masse: 49-52 kDa	

Anwendungen

Geprüfte Anwendungen: IF, IHC, WB, ELISA	Positivkontrollen:
Getestete Reaktivität: Human, Maus, Ratte	WB : LNCaP-Zellen, 4T1-Zellen, HEK-293-Zellen, HeLa-Zellen, HepG2-Zellen, Jurkat-Zellen, K-562-Zellen, Neuro-2a-Zellen, NIH/3T3-Zellen
Hinweis-IHC: Antigenmaskierung mit TE-Puffer pH 9,0 empfohlen. (*) Wahlweise kann die Antigenmaskierung auch mit Citratpuffer pH 6,0 erfolgen.	IHC : humanes Leberkarzinomgewebe,
	IF : HeLa-Zellen,

Hintergrundinformationen

Lagerung

Lagerungsbedingungen:
Bei -20°C lagern. Nach dem Versand ein Jahr lang stabil

Lagerungspuffer:
PBS mit 0.02% Natriumazid und 50% Glycerin pH 7.3.

Aliquotieren ist nicht notwendig bei -20°C Lagerung

*** 20ul-Größen enthalten 0.1% BSA

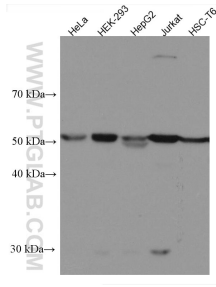
For technical support and original validation data for this product please contact:

T: 1 (888) 4PTGLAB (1-888-478-4522) (toll free in USA), or 1(312) 455-8498 (outside USA)

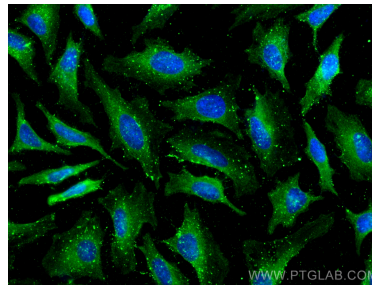
E: proteintech@ptglab.com
W: ptglab.com

This product is exclusively available under Proteintech Group brand and is not available to purchase from any other manufacturer.

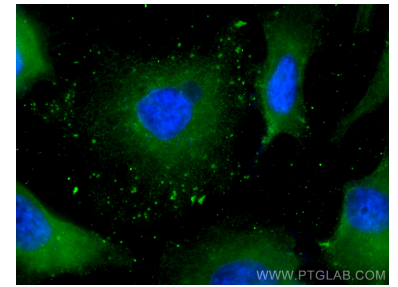
Ausgewählte Validierungsdaten



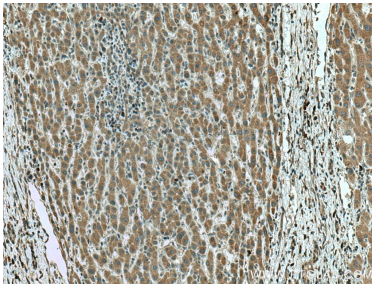
Various lysates were subjected to SDS PAGE followed by western blot with 67433-1-Ig (CYP20A1 antibody) at dilution of 1:5000 incubated at room temperature for 1.5 hours.



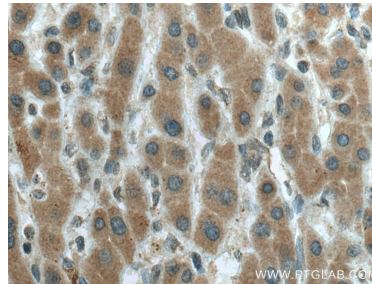
Immunofluorescent analysis of (-20°C Methanol) fixed HeLa cells using CYP20A1 antibody (67433-1-Ig, Clone: 2A9E2) at dilution of 1:400 and CoraLite®488-Conjugated AffiniPure Goat Anti-Mouse IgG(H+L).



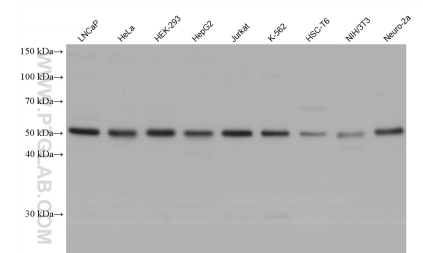
Immunofluorescent analysis of (-20°C Methanol) fixed HeLa cells using CYP20A1 antibody (67433-1-Ig, Clone: 2A9E2) at dilution of 1:400 and CoraLite®488-Conjugated AffiniPure Goat Anti-Mouse IgG(H+L).



Immunohistochemical analysis of paraffin-embedded human liver cancer tissue slide using 67433-1-Ig (CYP20A1 antibody) at dilution of 1:500 (under 10x lens). Heat mediated antigen retrieval with Tris-EDTA buffer (pH 9.0).



Immunohistochemical analysis of paraffin-embedded human liver cancer tissue slide using 67433-1-Ig (CYP20A1 antibody) at dilution of 1:500 (under 40x lens). Heat mediated antigen retrieval with Tris-EDTA buffer (pH 9.0).



Various lysates were subjected to SDS PAGE followed by western blot with 67433-1-Ig (CYP20A1 antibody) at dilution of 1:20000 incubated at room temperature for 1.5 hours.