

Nur für Forschungszwecke

# PROX1 Monoklonaler Antikörper

Katalog-Nr.:67438-1-Ig



## Allgemeine Informationen

<b>Katalog-Nr.:</b> 67438-1-Ig	<b>GenBank-Zugangsnummer:</b> BC024201	<b>Reinigungsmethode:</b> Protein-A-Reinigung
<b>Größe:</b> 150ul , Konzentration: 2000 µg/ml von5629 Nanodrop und 1000 µg/ml durch die Bradford-Methode mit BSA als Standard;	<b>GeneID (NCBI):</b> prospero homeobox 1	<b>CloneNo.:</b> 1D4B1
<b>Wirt:</b> Maus	<b>Vollständiger Name:</b> prospero homeobox 1	<b>Empfohlene Verdünnungen:</b> WB 1:1000-1:6000 IHC 1:2000-1:8000
<b>Isotyp:</b> IgG2b	<b>Berechnete Masse:</b> 737 aa, 83 kDa	
<b>Immunogen Katalognummer:</b> AG9681	<b>Beobachtete Masse:</b> 90 kDa	

## Anwendungen

<b>Geprüfte Anwendungen:</b> IHC, WB, ELISA	<b>Positivkontrollen:</b>
<b>Getestete Reaktivität:</b> Human, Maus, Ratte	<b>WB :</b> Rattenlebergewebe, HuH-7-Zellen
<b>Hinweis-IHC: Antigenmaskierung mit TE-Puffer pH 9,0 empfohlen. (*) Wahlweise kann die Antigenmaskierung auch mit Citratpuffer pH 6,0 erfolgen.</b>	<b>IHC :</b> humanes Lungenkarzinomgewebe,

## Hintergrundinformationen

PROX1, Prospero homeobox protein 1, belongs to the Prospero homeobox family and contain a Prospero-type homeobox DNA-binding domain. PROX1 plays a fundamental role in early development of CNS and regulates the expression of gene and development of postmitotic, undifferentiated neurons. Also, PROX1 is a required regulator of the development of the lymphatic system. This antibody is raised against part of C-terminal chain of human PROX1. The calculated molecular weight of PROX1 is 83 kDa, but with post-translational modifications, PROX1 is about 90 kDa.

## Lagerung

**Lagerungsbedingungen:**  
Bei -20°C lagern.  
**Lagerungspuffer:**  
PBS mit 0.02% Natriumazid und 50% Glycerin pH 7.3.  
**Aliquotieren ist nicht notwendig bei -20°C Lagerung**

**\*\*\* 20ul-Größen enthalten 0.1% BSA**

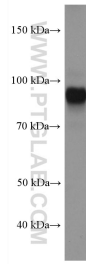
For technical support and original validation data for this product please contact:

T: 1 (888) 4PTGLAB (1-888-478-4522) (toll free  
in USA), or 1(312) 455-8498 (outside USA)

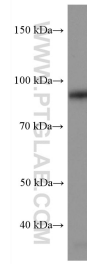
E: proteintech@ptglab.com  
W: ptglab.com

**This product is exclusively available under Proteintech Group brand and is not available to purchase from any other manufacturer.**

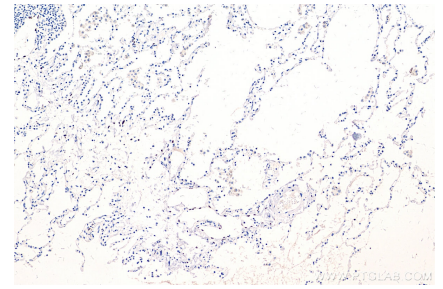
## Ausgewählte Validierungsdaten



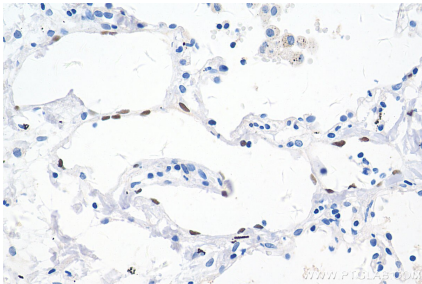
HuH-7 cells were subjected to SDS PAGE followed by western blot with 67438-1-Ig (PROX1 antibody) at dilution of 1:3000 incubated at room temperature for 1.5 hours.



rat liver tissue were subjected to SDS PAGE followed by western blot with 67438-1-Ig (PROX1 antibody) at dilution of 1:3000 incubated at room temperature for 1.5 hours.



Immunohistochemical analysis of paraffin-embedded human lung cancer tissue slide using 67438-1-Ig (PROX1 antibody) at dilution of 1:4000 (under 10x lens). Heat mediated antigen retrieval with Tris-EDTA buffer (pH 9.0).



Immunohistochemical analysis of paraffin-embedded human lung cancer tissue slide using 67438-1-Ig (PROX1 antibody) at dilution of 1:4000 (under 40x lens). Heat mediated antigen retrieval with Tris-EDTA buffer (pH 9.0).