

Allgemeine Informationen

Katalog-Nr.: 67440-1-Ig	GenBank-Zugangsnummer: BC060877	Reinigungsmethode: Protein-G-Reinigung
Größe: 150ul , Konzentration: 2000 µg/ml von8493 Nanodrop und 1000 µg/ml durch die Bradford-Methode mit BSA als Standard;	GeneID (NCBI): 8493	CloneNo.: 2D6D5
Wirt: Maus	Vollständiger Name: protein phosphatase 1D magnesium- dependent, delta isoform	Empfohlene Verdünnungen: WB 1:2000-1:10000 IHC 1:50-1:500 IF 1:50-1:500
Isotyp: IgG1	Beobachtete Masse: 67 kDa, 47 kDa	
Immunogen Katalognummer: AG24761		

Anwendungen

Geprüfte Anwendungen: IF, IHC, WB, ELISA	Positivkontrollen:
Getestete Reaktivität: Hausschwein, Human, Maus, Ratte	WB : MCF-7-Zellen, Hausschwein-Hirngewebe, HEK-293-Zellen, Maushirngewebe, Rattenhirngewebe, U2OS-Zellen
Hinweis-IHC: Antigendemaskierung mit TE-Puffer pH 9,0 empfohlen. (*) Wahlweise kann die Antigendemaskierung auch mit Citratpuffer pH 6,0 erfolgen.	IHC : humanes Kolonkarzinomgewebe, IF : HepG2-Zellen,

Hintergrundinformationen

PPM1D (also known as PP2Cd and WIP1) is a member of the PPM family, which is characterized by Mg²⁺/Mn²⁺-dependent activity and relative insensitivity to okadaic acid. The PPM1D gene is aberrantly amplified in a range of common cancers and encodes a protein phosphatase that is a potential therapeutic target (PMID: 17700519). This antibody can be detected two bands of 47 and 67 Kda.

Lagerung

Lagerungsbedingungen:
Bei -20°C lagern. Nach dem Versand ein Jahr lang stabil
Lagerungspuffer:
PBS mit 0.02% Natriumazid und 50% Glycerin pH 7.3.
Aliquotieren ist nicht notwendig bei -20°C Lagerung

***** 20ul-Größen enthalten 0.1% BSA**

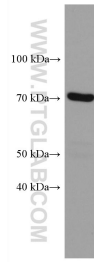
For technical support and original validation data for this product please contact:

T: 1 (888) 4PTGLAB (1-888-478-4522) (toll free in USA), or 1(312) 455-8498 (outside USA)

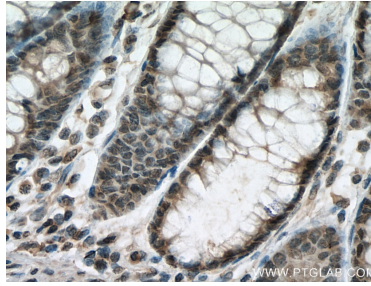
E: proteintech@ptglab.com
W: ptglab.com

This product is exclusively available under Proteintech Group brand and is not available to purchase from any other manufacturer.

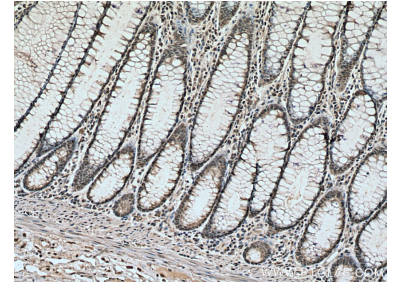
Ausgewählte Validierungsdaten



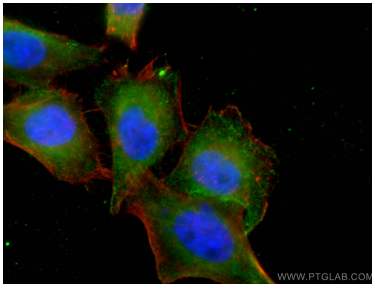
MCF-7 cells were subjected to SDS PAGE followed by western blot with 67440-1-Ig (PPM1D antibody) at dilution of 1:5000 incubated at room temperature for 1.5 hours.



Immunohistochemical analysis of paraffin-embedded human colon cancer tissue slide using 67440-1-Ig (PPM1D antibody) at dilution of 1:200 (under 40x lens). Heat mediated antigen retrieval with Tris-EDTA buffer (pH 9.0).



Immunohistochemical analysis of paraffin-embedded human colon cancer tissue slide using 67440-1-Ig (PPM1D antibody) at dilution of 1:200 (under 10x lens). Heat mediated antigen retrieval with Tris-EDTA buffer (pH 9.0).



Immunofluorescent analysis of (4% PFA) fixed HepG2 cells using 67440-1-Ig (PPM1D antibody), at dilution of 1:200 and Coralite®488-Conjugated AffiniPure Goat Anti-Mouse IgG(H+L).