

Nur für Forschungszwecke

MTH1 Monoklonaler Antikörper

Katalog-Nr.:67443-1-Ig



Allgemeine Informationen

Katalog-Nr.: 67443-1-Ig	GenBank-Zugangsnummer: BC014618	Reinigungsmethode: Protein-A-Reinigung
Größe: 150ul , Konzentration: 2000 µg/ml von4521 Nanodrop und 1000 µg/ml durch die Bradford-Methode mit BSA als Standard;	GeneID (NCBI): 4521	CloneNo.: 2D7G4
Wirt: Maus	Vollständiger Name: nudix (nucleoside diphosphate linked moiety X)-type motif 1	Empfohlene Verdünnungen: 1:2000-1:10000
Isotyp: IgG1	Berechnete Masse: 179aa,20 kDa; 197aa,23 kDa	
Immunogen Katalognummer: AG9802	Beobachtete Masse: 19 kDa	

Anwendungen

Geprüfte Anwendungen: WB, ELISA	Positivkontrollen: WB : HeLa-Zellen, HEK-293-Zellen, HepG2-Zellen, Jurkat-Zellen, K-562-Zellen
Getestete Reaktivität: Human	

Hintergrundinformationen

MTH1, also known as NUDT1 or 8-Oxo-dGTPase, is an important repair enzyme that prevents oxidative stress-induced DNA damage through hydrolyzing mutagenic 8-oxo-dGTP into 8-oxo-dGMP. MTH1 is expressed in postmitotic neurons as well as in proliferative tissues, and it is localized both in the mitochondria and nucleus. MTH1 might be a useful marker of oxidative stress and its level increased upon oxidative stress. Increased expression of MTH1 were also found in various cancer tissues and neurodegenerative diseases.

Lagerung

Lagerungsbedingungen:
Bei -20°C lagern. Nach dem Versand ein Jahr lang stabil

Lagerungspuffer:
PBS mit 0.02% Natriumazid und 50% Glycerin pH 7.3.

Aliquotieren ist nicht notwendig bei -20°C Lagerung

***** 20ul-Größen enthalten 0.1% BSA**

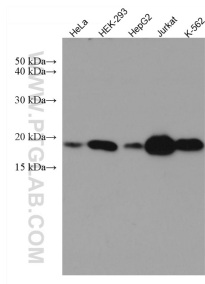
For technical support and original validation data for this product please contact:

T: 1 (888) 4PTGLAB (1-888-478-4522) (toll free
in USA), or 1(312) 455-8498 (outside USA)

E: proteintech@ptglab.com
W: ptglab.com

This product is exclusively available under Proteintech Group brand and is not available to purchase from any other manufacturer.

Ausgewählte Validierungsdaten



Various lysates were subjected to SDS PAGE followed by western blot with 67443-1-Ig (MTH1 antibody) at dilution of 1:5000 incubated at room temperature for 1.5 hours.