

Allgemeine Informationen

Katalog-Nr.: 67448-1-Ig	GenBank-Zugangsnummer: BC005844	Reinigungsmethode: Protein-G-Reinigung
Größe: 150ul, Konzentration: 2100 µg/ml von 622 Nanodrop und 1000 µg/ml durch die Bradford-Methode mit BSA als Standard;	GeneID (NCBI): 2100	CloneNo.: 2C3D4
Wirt: Maus	Vollständiger Name: 3-hydroxybutyrate dehydrogenase, type 1	Empfohlene Verdünnungen: WB 1:2000-1:10000 IHC 1:500-1:2000 IF 1:200-1:800
Isotyp: IgG1	Berechnete Masse: 38 kDa	
Immunogen Katalognummer: AG7864	Beobachtete Masse: 31 kDa	

Anwendungen

Geprüfte Anwendungen: IF, IHC, WB, ELISA	Positivkontrollen: WB: Hausschwein-Lebergewebe, COLO 320-Zellen, HepG2-Zellen, HT-29-Zellen IHC: humanes Leberkarzinomgewebe, IF: Mauslebergewebe,
In Publikationen genannte Anwendungen: WB	
Getestete Reaktivität: Hausschwein, Human, Maus, Ratte	
Zitierte Arten: Maus	
Hinweis-IHC: Antigenmaskierung mit TE-Puffer pH 9,0 empfohlen. (*) Wahlweise kann die Antigenmaskierung auch mit Citratpuffer pH 6,0 erfolgen.	

Hintergrundinformationen

BDH1 (3-hydroxybutyrate dehydrogenase, type 1) is a 343 amino acid protein that localizes to the mitochondrial matrix and belongs to the short-chain dehydrogenases/reductases (SDR) family. The deduced 343 amino acid protein contains a 46 residue leader peptide, which is cleaved to produce the mature form. It is a lipid-requiring mitochondrial enzyme with a specific requirement of phosphatidylcholine (PC).

Bemerkenswerte Veröffentlichungen

Verfasser	Pubmed ID	Journal	Anwendung
Yi NA Dong	36016708	PNAS Nexus	WB

Lagerung

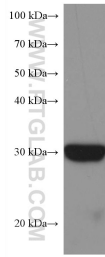
Lagerungsbedingungen:
Bei -20°C lagern.
Lagerungspuffer:
PBS mit 0.02% Natriumazid und 50% Glycerin pH 7.3.
Aliquotieren ist nicht notwendig bei -20°C Lagerung

*** 20ul-Größen enthalten 0.1% BSA

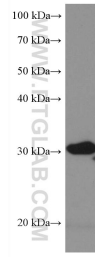
For technical support and original validation data for this product please contact:
T: 1 (888) 4PTGLAB (1-888-478-4522) (toll free in USA), or 1(312) 455-8498 (outside USA)
E: proteintech@ptglab.com
W: ptglab.com

This product is exclusively available under Proteintech Group brand and is not available to purchase from any other manufacturer.

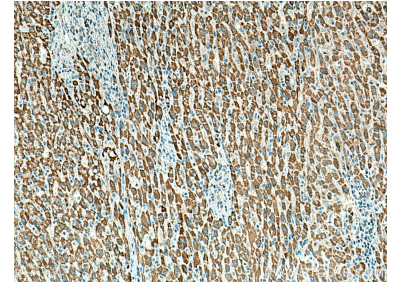
Ausgewählte Validierungsdaten



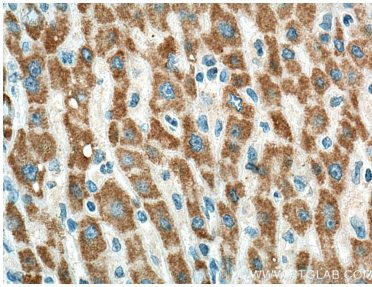
pig liver tissue were subjected to SDS PAGE followed by western blot with 67448-1-Ig (BDH1 antibody) at dilution of 1:5000 incubated at room temperature for 1.5 hours.



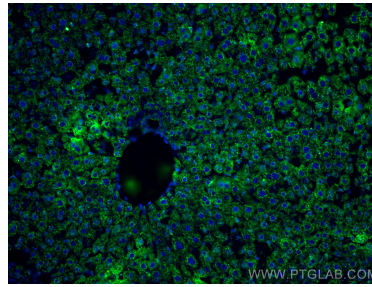
HSC-T6 cells were subjected to SDS PAGE followed by western blot with 67448-1-Ig (BDH1 antibody) at dilution of 1:5000 incubated at room temperature for 1.5 hours.



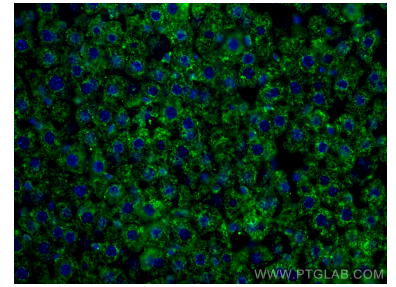
Immunohistochemical analysis of paraffin-embedded human liver cancer tissue slide using 67448-1-Ig (BDH1 antibody) at dilution of 1:1000 (under 10x lens). Heat mediated antigen retrieval with Tris-EDTA buffer (pH 9.0).



Immunohistochemical analysis of paraffin-embedded human liver cancer tissue slide using 67448-1-Ig (BDH1 antibody) at dilution of 1:1000 (under 40x lens). Heat mediated antigen retrieval with Tris-EDTA buffer (pH 9.0).



Immunofluorescent analysis of (4% PFA) fixed mouse liver tissue using BDH1 antibody (67448-1-Ig, Clone: 2C3D4) at dilution of 1:400 and CoraLite@488-Conjugated AffiniPure Goat Anti-Mouse IgG(H+L).



Immunofluorescent analysis of (4% PFA) fixed mouse liver tissue using BDH1 antibody (67448-1-Ig, Clone: 2C3D4) at dilution of 1:400 and CoraLite@488-Conjugated AffiniPure Goat Anti-Mouse IgG(H+L).