

Nur für Forschungszwecke

OMA1 Monoklonaler Antikörper

Katalog-Nr.:67449-1-Ig



Allgemeine Informationen

Katalog-Nr.: 67449-1-Ig	GenBank-Zugangsnummer: BC012915	Reinigungsmethode: Protein-G-Reinigung
Größe: 150ul , Konzentration: 1900 µg/ml von115209 Nanodrop und 1000 µg/ml durch die Bradford-Methode mit BSA als Standard;	GeneID (NCBI): 115209	CloneNo.: 1H4D12
Wirt: Maus	Vollständiger Name: OMA1 homolog, zinc metallopeptidase (S. cerevisiae)	Empfohlene Verdünnungen: WB 1:1000-1:5000
Isotyp: IgG1	Berechnete Masse: 524 aa, 60 kDa	
Immunogen Katalognummer: AG11201	Beobachtete Masse: 60 kDa	

Anwendungen

Geprüfte Anwendungen: WB,ELISA	Positivkontrollen:
Getestete Reaktivität: Human, Maus	WB : NIH/3T3-Zellen, HEK-293-Zellen, HeLa-Zellen, Jurkat-Zellen, LNCaP-Zellen

Hintergrundinformationen

OMA1(Overlapping with the m-AAA protease 1 homolog) is also named as MPRP1(Metalloprotease-related protein 1) and belongs to the peptidase M48 family.It is a zinc metalloprotease that spans the inner mitochondrial membrane with a number of predicted membrane spanning domains and the 60 kDa form of OMA1 rapidly accumulated concomitantly with the cleavage of all OPA1 variants,and the 40 kDa form of OMA1 may be the inactive form, with the 60 kDa form being the active enzyme(PMID:20334834)

Lagerung

Lagerungsbedingungen:
Bei -20°C lagern.
Lagerungspuffer:
PBS mit 0.02% Natriumazid und 50% Glycerin pH 7.3.
Aliquotieren ist nicht notwendig bei -20°C Lagerung

***** 20ul-Größen enthalten 0.1% BSA**

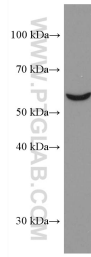
For technical support and original validation data for this product please contact:

T: 1 (888) 4PTGLAB (1-888-478-4522) (toll free
in USA), or 1(312) 455-8498 (outside USA)

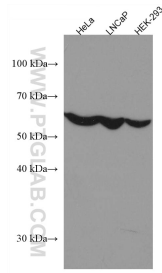
E: proteintech@ptglab.com
W: ptglab.com

This product is exclusively available under Proteintech Group brand and is not available to purchase from any other manufacturer.

Ausgewählte Validierungsdaten



NIH/3T3 cells were subjected to SDS PAGE followed by western blot with 67449-1-Ig (OMA1 antibody) at dilution of 1:3000 incubated at room temperature for 1.5 hours.



Various lysates were subjected to SDS PAGE followed by western blot with 67449-1-Ig (OMA1 antibody) at dilution of 1:3000 incubated at room temperature for 1.5 hours.