

Nur für Forschungszwecke

ME2 Monoklonaler Antikörper

Katalog-Nr.:67457-1-Ig

Vorgestelltes Produkt



Allgemeine Informationen

Katalog-Nr.: 67457-1-Ig	GenBank-Zugangsnummer: BC000147	Reinigungsmethode: Protein-A-Reinigung
Größe: 150ul , Konzentration: 900 µg/ml von Nanodrop und 500 µg/ml durch die Bradford-Methode mit BSA als Standard;	GeneID (NCBI): 4200	CloneNo.: 6E6E2
Wirt: Maus	Vollständiger Name: malic enzyme 2, NAD(+)-dependent, mitochondrial	Empfohlene Verdünnungen: WB 1:1000-1:5000 IHC 1:50-1:500
Isotyp: IgG2a	Berechnete Masse: 65 kDa	
Immunogen Katalognummer: AG20741	Beobachtete Masse: 54 kDa, 65 kDa	

Anwendungen

Geprüfte Anwendungen: IHC, WB, ELISA	Positivkontrollen: WB : LNCaP-Zellen, HeLa-Zellen, HepG2-Zellen, K-562-Zellen, NIH/3T3-Zellen IHC : humanes Leberkarzinomgewebe,
Getestete Reaktivität: Human, Maus, Ratte	
Hinweis-IHC: Antigenmaskierung mit TE-Puffer pH 9,0 empfohlen. (*) Wahlweise kann die Antigenmaskierung auch mit Citratpuffer pH 6,0 erfolgen.	

Hintergrundinformationen

ME2(malic enzyme 2) is also named as NAD-ME and belongs to the malic enzymes family. ME1, ME2 are important for NADPH production, lipogenesis and glutamine metabolism, but ME2 has a more profound effect. ME2 is a genome-coded mitochondrial enzyme that converts malate to pyruvate and is involved in neuronal synthesis of the neurotransmitter γ -aminobutyric acid (GABA)(PMID:15532013). This protein has 2 isoforms produced by alternative splicing with the MW of 65 kDa and 54 kDa.

Lagerung

Lagerungsbedingungen:
Bei -20°C lagern.
Lagerungspuffer:
PBS mit 0.02% Natriumazid und 50% Glycerin pH 7.3.
Aliquotieren ist nicht notwendig bei -20°C Lagerung

*** 20ul-Größen enthalten 0.1% BSA

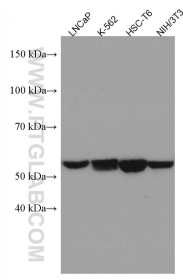
For technical support and original validation data for this product please contact:

T: 1 (888) 4PTGLAB (1-888-478-4522) (toll free in USA), or 1(312) 455-8498 (outside USA)

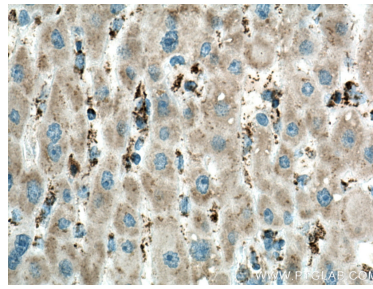
E: proteintech@ptglab.com
W: ptglab.com

This product is exclusively available under Proteintech Group brand and is not available to purchase from any other manufacturer.

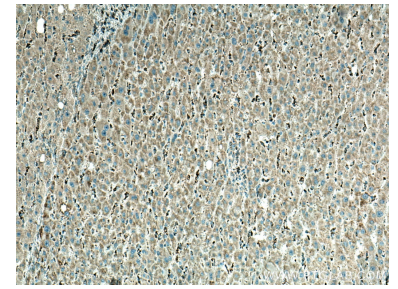
Ausgewählte Validierungsdaten



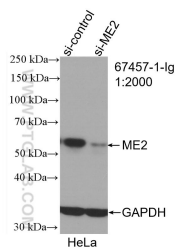
Various lysates were subjected to SDS PAGE followed by western blot with 67457-1-Ig (ME2 antibody) at dilution of 1:2500 incubated at room temperature for 1.5 hours.



Immunohistochemical analysis of paraffin-embedded human liver cancer tissue slide using 67457-1-Ig (ME2 antibody) at dilution of 1:200 (under 40x lens). Heat mediated antigen retrieval with Tris-EDTA buffer (pH 9.0).



Immunohistochemical analysis of paraffin-embedded human liver cancer tissue slide using 67457-1-Ig (ME2 antibody) at dilution of 1:200 (under 10x lens). Heat mediated antigen retrieval with Tris-EDTA buffer (pH 9.0).



WB result of ME2 antibody (67457-1-Ig; 1:2000; incubated at room temperature for 1.5 hours) with sh-Control and sh-ME2 transfected HeLa cells.