

Nur für Forschungszwecke

CEP55 Monoklonaler Antikörper

Katalog-Nr.:67460-1-Ig



Allgemeine Informationen

Katalog-Nr.: 67460-1-Ig	GenBank-Zugangsnummer: BC008947	Reinigungsmethode: Protein-G-Reinigung
Größe: 150ul , Konzentration: 2100 µg/ml von55165 Nanodrop und 1000 µg/ml durch die Bradford-Methode mit BSA als Standard;	GeneID (NCBI): 55165	CloneNo.: 2D11F7
Wirt: Maus	Vollständiger Name: centrosomal protein 55kDa	Empfohlene Verdünnungen: WB 1:5000-1:50000 IF 1:50-1:500
Isotyp: IgG1	Berechnete Masse: 54 kDa	
Immunogen Katalognummer: AG29995	Beobachtete Masse: 47-55 kDa	

Anwendungen

Geprüfte Anwendungen: IF, WB, ELISA	Positivkontrollen:
Getestete Reaktivität: Human	WB : A549-Zellen, HEK-293-Zellen, HeLa-Zellen, HepG2-Zellen, Jurkat-Zellen, Maushodengewebe
	IF : HeLa-Zellen, HepG2-Zellen

Hintergrundinformationen

CEP55, also named as C10orf3 and URCC6, is a 55 kDa protein which located in the centrosome in interphase cells and recruited to the midbody during cytokinesis, is essential for completion of cell abscission. It plays a role in mitotic exit and cytokinesis.CEP55 has two isoforms with the MW of 47 and 55 kDa.

Lagerung

Lagerungsbedingungen:
Bei -20°C lagern. Nach dem Versand ein Jahr lang stabil

Lagerungspuffer:
PBS mit 0.02% Natriumazid und 50% Glycerin pH 7.3.

Aliquotieren ist nicht notwendig bei -20°C Lagerung

*** 20ul-Größen enthalten 0.1% BSA

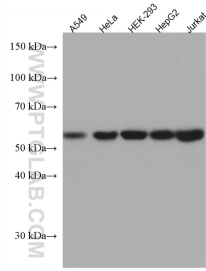
For technical support and original validation data for this product please contact:

T: 1 (888) 4PTGLAB (1-888-478-4522) (toll free
in USA), or 1(312) 455-8498 (outside USA)

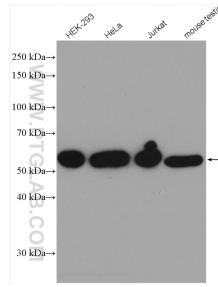
E: proteintech@ptglab.com
W: ptglab.com

This product is exclusively available under Proteintech Group brand and is not available to purchase from any other manufacturer.

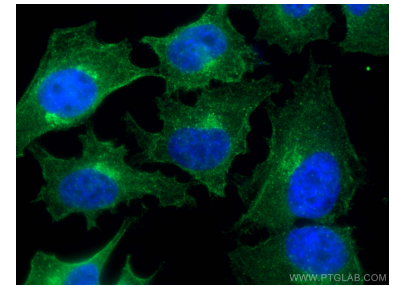
Ausgewählte Validierungsdaten



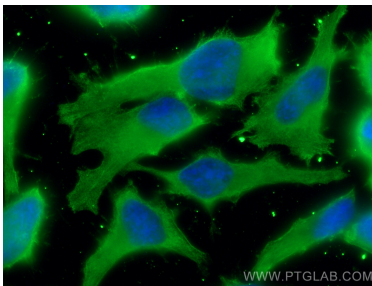
Various lysates were subjected to SDS PAGE followed by western blot with 67460-1-Ig (CEP55 antibody) at dilution of 1:15000 incubated at room temperature for 1.5 hours.



Various lysates were subjected to SDS PAGE followed by western blot with 67460-1-Ig (CEP55 antibody) at dilution of 1:15000 incubated at room temperature for 1.5 hours.



Immunofluorescent analysis of (4% PFA) fixed HeLa cells using 67460-1-Ig (CEP55 antibody), at dilution of 1:200 and CoraLite®488-Conjugated AffiniPure Goat Anti-Mouse IgG(H+L).



Immunofluorescent analysis of (-20°C Ethanol) fixed HeLa cells using CEP55 antibody (67460-1-Ig, Clone: 2D11F7) at dilution of 1:800 and CoraLite®488-Conjugated AffiniPure Goat Anti-Mouse IgG(H+L).