

Nur für Forschungszwecke

C20orf3/APMAP Monoklonaler Antikörper



Katalog-Nr.:67464-1-Ig

Vorgestelltes Produkt

Allgemeine Informationen

Katalog-Nr.:
67464-1-Ig

Größe:
150ul, Konzentration: 1600 µg/ml von57136
Nanodrop und 1000 µg/ml durch die
Bradford-Methode mit BSA als
Standard;

Wirt:
Maus

Isotyp:
IgG1

Immunogen Katalognummer:
AG29996

GenBank-Zugangsnummer:
BC003501

GeneID (NCBI):

Vollständiger Name:
chromosome 20 open reading frame 3

Berechnete Masse:
416 aa, 46 kDa

Beobachtete Masse:
42-46 kDa

Reinigungsmethode:
Protein-G-Reinigung

CloneNo.:
1C6C2

Empfohlene Verdünnungen:
1:5000-1:50000

Anwendungen

Geprüfte Anwendungen:
WB, ELISA

Getestete Reaktivität:
Human, Kaninchen, Maus, Ratte

Positivkontrollen:

WB : Jurkat-Zellen, HepG2-Zellen, humanes Plazenta-
Gewebe, Kaninchenlebergewebe, LNCaP-Zellen,
Mauslebergewebe, NIH/3T3-Zellen,
Rattenlebergewebe

Hintergrundinformationen

Lagerung

Lagerungsbedingungen:
Bei -20°C lagern. Nach dem Versand ein Jahr lang stabil
Lagerungspuffer:
PBS mit 0.02% Natriumazid und 50% Glycerin pH 7.3.
Aliquotieren ist nicht notwendig bei -20°C Lagerung

*** 20ul-Größen enthalten 0.1% BSA

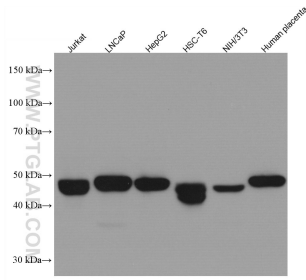
For technical support and original validation data for this product please contact:

T: 1 (888) 4PTGLAB (1-888-478-4522) (toll free
in USA), or 1(312) 455-8498 (outside USA)

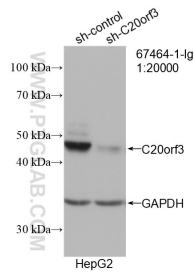
E: proteintech@ptglab.com
W: ptglab.com

This product is exclusively available under Proteintech
Group brand and is not available to purchase from any
other manufacturer.

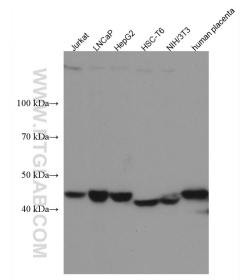
Ausgewählte Validierungsdaten



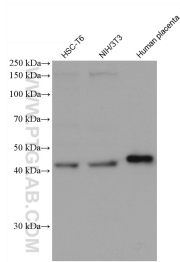
Various lysates were subjected to SDS PAGE followed by western blot with 67464-1-Ig (C20orf3/APMAP antibody) at dilution of 1:50000 incubated at room temperature for 1.5 hours.



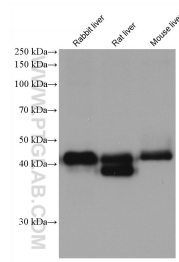
WB result of C20orf3/APMAP antibody (67464-1-Ig; 1:20000; incubated at room temperature for 1.5 hours) with sh-Control and sh-C20orf3/APMAP transfected HepG2 cells.



Various lysates were subjected to SDS PAGE followed by western blot with 67464-1-Ig (C20orf3/APMAP antibody) at dilution of 1:20000 incubated at room temperature for 1.5 hours.



Various lysates were subjected to SDS PAGE followed by western blot with 67464-1-Ig (C20orf3/APMAP antibody) at dilution of 1:50000 incubated at room temperature for 1.5 hours.



Various lysates were subjected to SDS PAGE followed by western blot with 67464-1-Ig (C20orf3/APMAP antibody) at dilution of 1:50000 incubated at room temperature for 1.5 hours.