

Nur für Forschungszwecke

SOD1 Monoklonaler Antikörper

Katalog-Nr.:67480-1-Ig

Vorgestelltes Produkt

7 Publikationen



Allgemeine Informationen

Katalog-Nr.: 67480-1-Ig	GenBank-Zugangsnummer: BC001034	Reinigungsmethode: Protein-A-Reinigung
Größe: 150ul , Konzentration: 1000 µg/ml von6647 Nanodrop und 500 µg/ml durch die Bradford-Methode mit BSA als Standard;	GeneID (NCBI): 66647	CloneNo.: 2F10G1
Wirt: Maus	Vollständiger Name: superoxide dismutase 1, soluble	Empfohlene Verdünnungen: WB 1:5000-1:50000 IHC 1:200-1:1000 IF 1:200-1:800
Isotyp: IgG2a	Berechnete Masse: 16 kDa	
Immunogen Katalognummer: AG28553	Beobachtete Masse: 16-20 kDa	

Anwendungen

Geprüfte Anwendungen: IF, IHC, IP, WB, ELISA	Positivkontrollen: WB : HeLa-Zellen, Hausschwein-Hirngewebe, HEK-293-Zellen, HepG2-Zellen, Jurkat-Zellen, K-562-Zellen, Kaninchenhirngewebe, Maushirngewebe, Rattenhirngewebe IHC : humanes Leberkarzinomgewebe, Maus-Cerebellum-Gewebe, Maushirngewebe, Ratten-Cerebellum-Gewebe, Rattenhirngewebe IF : HEK-293T-Zellen, NIH/3T3-Zellen
In Publikationen genannte Anwendungen: IF, WB	
Getestete Reaktivität: Hausschwein, Human, Kaninchen, Maus, Ratte	
Zitierte Arten: Human, Maus, Ratte	
Hinweis-IHC: Antigendemaskierung mit TE-Puffer pH 9,0 empfohlen. (*) Wahlweise kann die Antigendemaskierung auch mit Citratpuffer pH 6,0 erfolgen.	

Hintergrundinformationen

The enzymatic function of Cu/Zn Superoxide Dismutase (SOD1), previously known as hemocuprein and IPOA, was first characterized in 1969 (PMID: 5389100). SOD1 is commonly known for its ROS scavenging activity, but recent work has uncovered additional roles in modulating metabolism, maintaining redox balance, and regulating transcription. In disease contexts, SOD1 is best-known for its role in a familial form of amyotrophic lateral sclerosis (fALS) (PMID: 10630188). In addition, SOD1 is overexpressed in numerous cancer types, including lung adenocarcinoma, non-small-cell lung cancer, and 70% of primary breast cancers (PMID: 31344643).

Bemerkenswerte Veröffentlichungen

Verfasser	Pubmed ID	Journal	Anwendung
Jie Zou	34825483	Thorac Cancer	WB
Jie Jin	34795843	Oxid Med Cell Longev	IF
Pei-Yu Wu	35738116	Phytomedicine	WB

Lagerung

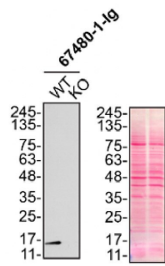
Lagerungsbedingungen:
Bei -20°C lagern. Nach dem Versand ein Jahr lang stabil
Lagerungspuffer:
PBS mit 0.02% Natriumazid und 50% Glycerin pH 7.3.
Aliquotieren ist nicht notwendig bei -20°C Lagerung

*** 20ul-Größen enthalten 0.1% BSA

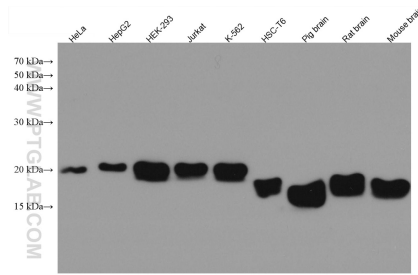
For technical support and original validation data for this product please contact:
T: 1 (888) 4PTGLAB (1-888-478-4522) (toll free in USA), or 1(312) 455-8498 (outside USA)
E: proteintech@ptglab.com
W: ptglab.com

This product is exclusively available under Proteintech Group brand and is not available to purchase from any other manufacturer.

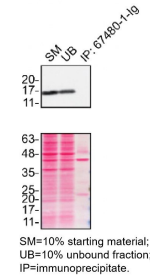
Ausgewählte Validierungsdaten



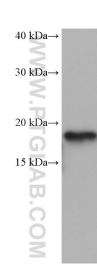
HeLa (WT and SOD1 KO) lysates prepared with RIPA buffer, 20 µg protein loaded. 67480-1-Ig incubated at 1:10000 at 4°C overnight in 5% milk in TBST. Ponceau stained transfers shown on right. Data provided by YCharOS, an open science company with a mission to validate commercial antibodies to improve scientific reproducibility and transparency.



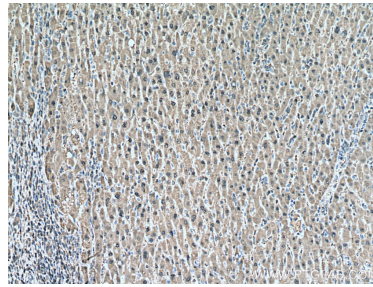
Various lysates were subjected to SDS PAGE followed by western blot with 67480-1-Ig (SOD1 antibody) at dilution of 1:20000 incubated at room temperature for 1.5 hours.



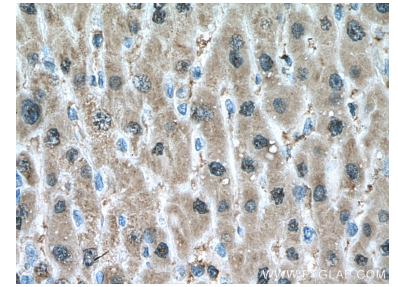
HeLa lysates prepared and IP of SOD1 performed using 2.0 µg of 67480-1-Ig coupled to protein G-Sepharose beads. The Ponceau stained transfers of each blot are shown. Data provided by YCharOS, an open science company with a mission to validate commercial antibodies to improve scientific reproducibility and transparency.



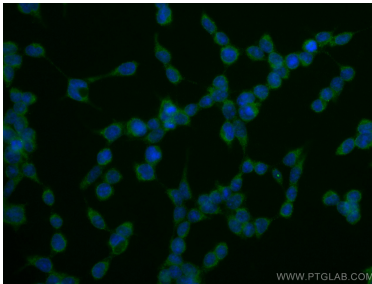
rabbit brain tissue were subjected to SDS PAGE followed by western blot with 67480-1-Ig (SOD1 antibody) at dilution of 1:20000 incubated at room temperature for 1.5 hours.



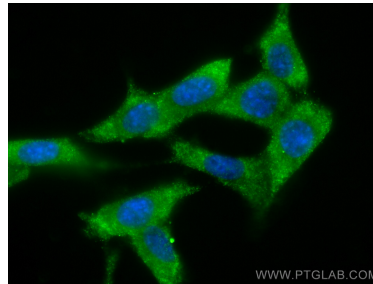
Immunohistochemical analysis of paraffin-embedded human liver cancer tissue slide using 67480-1-Ig (SOD1 antibody) at dilution of 1:1000 (under 10x lens). Heat mediated antigen retrieval with Tris-EDTA buffer (pH 9.0).



Immunohistochemical analysis of paraffin-embedded human liver cancer tissue slide using 67480-1-Ig (SOD1 antibody) at dilution of 1:1000 (under 40x lens). Heat mediated antigen retrieval with Tris-EDTA buffer (pH 9.0).



Immunofluorescent analysis of (-20°C Ethanol) fixed HEK-293T cells using SOD1 antibody (67480-1-Ig, Clone: 2F10G1) at dilution of 1:400 and CoraLite®488-Conjugated AffiniPure Goat Anti-Mouse IgG(H+L).



Immunofluorescent analysis of (-20°C Methanol) fixed NIH/3T3 cells using SOD1 antibody (67480-1-Ig, Clone: 2F10G1) at dilution of 1:800 and CoraLite®488-Conjugated AffiniPure Goat Anti-Mouse IgG(H+L).