

Nur für Forschungszwecke

# S100P Monoklonaler Antikörper

Katalog-Nr.:67485-1-Ig



## Allgemeine Informationen

<b>Katalog-Nr.:</b> 67485-1-Ig	<b>GenBank-Zugangsnummer:</b> BC006819	<b>Reinigungsmethode:</b> Protein-A-Reinigung
<b>Größe:</b> 150ul, Konzentration: 2000 µg/ml von6286 Nanodrop und 1000 µg/ml durch die Bradford-Methode mit BSA als Standard;	<b>GeneID (NCBI):</b> S100 calcium binding protein P	<b>CloneNo.:</b> 1G6C3
<b>Wirt:</b> Maus	<b>Berechnete Masse:</b> 95 aa, 11 kDa	<b>Empfohlene Verdünnungen:</b> WB 1:1000-1:6000 IHC 1:4000-1:16000
<b>Isotyp:</b> IgG2b	<b>Beobachtete Masse:</b> 10 kDa	
<b>Immunogen Katalognummer:</b> AG19115		

## Anwendungen

<b>Geprüfte Anwendungen:</b> IHC, WB,ELISA	<b>Positivkontrollen:</b> WB : BxPC-3-Zellen,
<b>Getestete Reaktivität:</b> Human	<b>IHC :</b> humanes Pankreaskarzinomgewebe, humanes Plazenta-Gewebe, humanes Urothelkarzinomgewebe
<b>Hinweis-IHC: Antigenmaskierung mit TE- Puffer pH 9,0 empfohlen. (*) Wahlweise kann die Antigenmaskierung auch mit Citratpuffer pH 6,0 erfolgen.</b>	

## Hintergrundinformationen

S100P protein is a relatively small (95 amino acid) isoform of the S100 protein family that was first isolated from human placenta. Overexpression of S100P has been detected in several cancers such as breast, colon, prostate, pancreatic and lung carcinomas, and the protein has been functionally implicated in carcinogenic processes. S100P protein is widely expressed in both normal and neoplastic tissues. It clearly shows ectopic expression in some cancers. Based on the high expression in certain tumors, S100P could represent a potential target for novel diagnostic and therapeutic applications.

## Lagerung

**Lagerungsbedingungen:**  
Bei -20°C lagern.  
**Lagerungspuffer:**  
PBS mit 0.02% Natriumazid und 50% Glycerin pH 7.3.  
**Aliquotieren ist nicht notwendig bei -20°C Lagerung**

\*\*\* 20ul-Größen enthalten 0.1% BSA

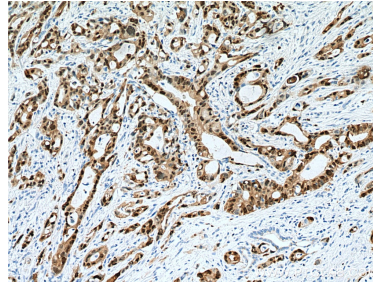
For technical support and original validation data for this product please contact:  
T: 1 (888) 4PTGLAB (1-888-478-4522) (toll free in USA), or 1(312) 455-8498 (outside USA)  
E: proteintech@ptglab.com  
W: ptglab.com

This product is exclusively available under Proteintech Group brand and is not available to purchase from any other manufacturer.

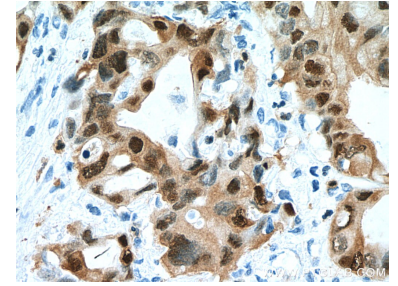
## Ausgewählte Validierungsdaten



BXPC-3 cells were subjected to SDS PAGE followed by western blot with 67485-1-Ig (S100P antibody) at dilution of 1:3000 incubated at room temperature for 1.5 hours.



Immunohistochemical analysis of paraffin-embedded human pancreas cancer tissue slide using 67485-1-Ig (S100P antibody) at dilution of 1:8000 (under 10x lens). Heat mediated antigen retrieval with Tris-EDTA buffer (pH 9.0).



Immunohistochemical analysis of paraffin-embedded human pancreas cancer tissue slide using 67485-1-Ig (S100P antibody) at dilution of 1:8000 (under 40x lens). Heat mediated antigen retrieval with Tris-EDTA buffer (pH 9.0).