

Nur für Forschungszwecke

# HRD1/SYVN1 Monoklonaler Antikörper



Katalog-Nr.:67488-1-Ig **2 Publikationen**

## Allgemeine Informationen

<b>Katalog-Nr.:</b> 67488-1-Ig	<b>GenBank-Zugangsnummer:</b> BC030530	<b>Reinigungsmethode:</b> Protein-A-Reinigung
<b>Größe:</b> 150ul , Konzentration: 1800 µg/ml von84447 Nanodrop und 1000 µg/ml durch die Bradford-Methode mit BSA als Standard;	<b>GeneID (NCBI):</b> 84447	<b>CloneNo.:</b> 2C8A7
<b>Wirt:</b> Maus	<b>Vollständiger Name:</b> synovial apoptosis inhibitor 1, synoviolin	<b>Empfohlene Verdünnungen:</b> WB 1:1000-1:6000 IHC 1:500-1:2000 IF 1:200-1:800
<b>Isotyp:</b> IgG2b	<b>Berechnete Masse:</b> 617 aa, 68 kDa	
<b>Immunogen Katalognummer:</b> AG4456	<b>Beobachtete Masse:</b> 68-76 kDa	

## Anwendungen

<b>Geprüfte Anwendungen:</b> IF, IHC, WB,ELISA	<b>Positivkontrollen:</b> WB : A549-Zellen, HEK-293-Zellen, HeLa-Zellen, HepG2-Zellen, Jurkat-Zellen, NIH/3T3-Zellen IHC : humanes Leberkarzinomgewebe, IF : HeLa-Zellen,
<b>In Publikationen genannte Anwendungen:</b> IF, WB	
<b>Getestete Reaktivität:</b> Human, Maus, Ratte	
<b>Zitierte Arten:</b> Maus, Ziege	
<b>Hinweis-IHC: Antigenmaskierung mit TE-Puffer pH 9,0 empfohlen. (*) Wahlweise kann die Antigenmaskierung auch mit Citratpuffer pH 6,0 erfolgen.</b>	

## Hintergrundinformationen

HRD1 is also named as SYVN1(Synovial apoptosis inhibitor 1) , KIAA1810. It acts as an E3 ubiquitin-protein ligase which accepts ubiquitin specifically from endoplasmic reticulum-associated UBC7 E2 ligase and transfers it to substrates, promoting their degradation. Two distinct binding sites mediate Hrd1 dimerization or oligomerization, one located within the transmembrane region and another within the cytosolic domain. (PMID:19864457).Western blot analysis detected abundant HRD1 expression in liver and kidney. Mouse liver and spleen expressed Hrd1 as an 85-kD protein(PMID:12646171).

## Bemerkenswerte Veröffentlichungen

Verfasser	Pubmed ID	Journal	Anwendung
Zhipeng Sun	36499219	Int J Mol Sci	WB
Yifei Sun	35279748	Cell Mol Life Sci	IF

## Lagerung

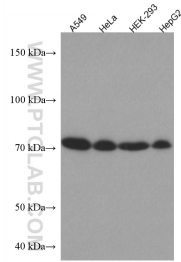
**Lagerungsbedingungen:**  
Bei -20°C lagern.  
**Lagerungspuffer:**  
PBS mit 0.02% Natriumazid und 50% Glycerin pH 7.3.  
Aliquotieren ist nicht notwendig bei -20°C Lagerung

\*\*\* 20ul-Größen enthalten 0.1% BSA

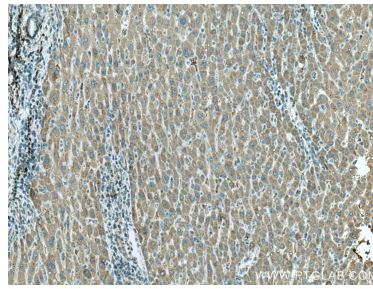
For technical support and original validation data for this product please contact:  
T: 1 (888) 4PTGLAB (1-888-478-4522) (toll free in USA), or 1(312) 455-8498 (outside USA)  
E: proteintech@ptglab.com  
W: ptglab.com

This product is exclusively available under Proteintech Group brand and is not available to purchase from any other manufacturer.

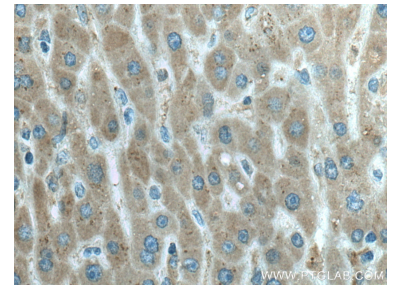
## Ausgewählte Validierungsdaten



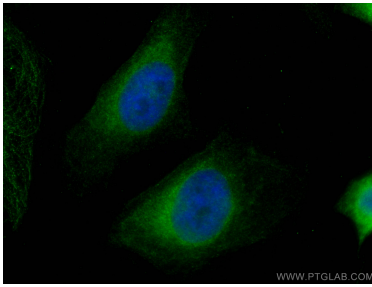
Various lysates were subjected to SDS PAGE followed by western blot with 67488-1-Ig (HRD1 antibody) at dilution of 1:3000 incubated at room temperature for 1.5 hours.



Immunohistochemical analysis of paraffin-embedded human liver cancer tissue slide using 67488-1-Ig (HRD1/SYVN1 antibody) at dilution of 1:1000 (under 10x lens). Heat mediated antigen retrieval with Tris-EDTA buffer (pH 9.0).



Immunohistochemical analysis of paraffin-embedded human liver cancer tissue slide using 67488-1-Ig (HRD1/SYVN1 antibody) at dilution of 1:1000 (under 40x lens). Heat mediated antigen retrieval with Tris-EDTA buffer (pH 9.0).



Immunofluorescent analysis of (4% PFA) fixed HeLa cells using HRD1/SYVN1 antibody (67488-1-Ig, Clone: 2C8A7) at dilution of 1:400 and CoraLite®488-Conjugated AffiniPure Goat Anti-Mouse IgG(H+L).