

Allgemeine Informationen

Katalog-Nr.: 67497-1-Ig	GenBank-Zugangsnummer: BC002454	Reinigungsmethode: Protein-G-Reinigung
Größe: 150ul , Konzentration: 2000 µg/ml von2784 Nanodrop und 1000 µg/ml durch die Bradford-Methode mit BSA als Standard;	GeneID (NCBI): 2784	CloneNo.: 2B6E1
Wirt: Maus	Vollständiger Name: guanine nucleotide binding protein (GWB protein), beta polypeptide 3	Empfohlene Verdünnungen: IWB 1:1000-1:6000 IHC 1:500-1:2000 IF 1:200-1:800
Isotyp: IgG1	Berechnete Masse: 37 kDa	
Immunogen Katalognummer: AG7050	Beobachtete Masse: 35-37 kDa	

Anwendungen

Geprüfte Anwendungen:

IF, IHC, WB,ELISA

Getestete Reaktivität:

Hausschwein, Human, Maus, Ratte

Hinweis-IHC: Antigendemaskierung mit TE-Puffer pH 9,0 empfohlen. (*) Wahlweise kann die Antigendemaskierung auch mit Citratpuffer pH 6,0 erfolgen.

Positivkontrollen:

WB : Hausschwein-Hirngewebe, HepG2-Zellen, L02-Zellen, Maushirngewebe, Rattenhirngewebe, Ratten-Retina-Gewebe

IHC : humanes Leberkarzinomgewebe,

IF : HepG2-Zellen,

Hintergrundinformationen

Guanine nucleotide-binding proteins (g proteins) are involved as a modulator or transducer in various transmembrane signaling systems, by integrating signals between receptors and effector proteins. G proteins are composed of an alpha, a beta, and a gamma subunit. This gene encodes a 34 kd beta subunit, being expressed in all tissues. Beta subunits are important regulators of alpha subunits, as well as of certain signal transduction receptors and effectors.

Lagerung

Lagerungsbedingungen:

Bei -20°C lagern.

Lagerungspuffer:

PBS mit 0.02% Natriumazid und 50% Glycerin pH 7.3.

Aliquotieren ist nicht notwendig bei -20°C Lagerung

***** 20ul-Größen enthalten 0.1% BSA**

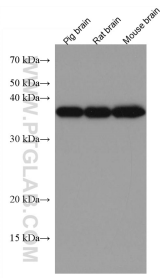
For technical support and original validation data for this product please contact:

T: 1 (888) 4PTGLAB (1-888-478-4522) (toll free in USA), or 1(312) 455-8498 (outside USA)

E: proteintech@ptglab.com
W: ptglab.com

This product is exclusively available under Proteintech Group brand and is not available to purchase from any other manufacturer.

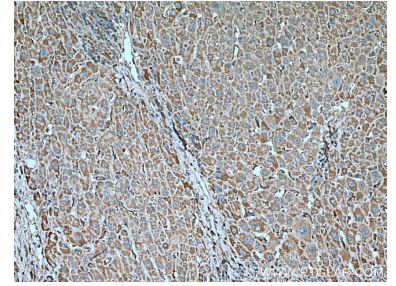
Ausgewählte Validierungsdaten



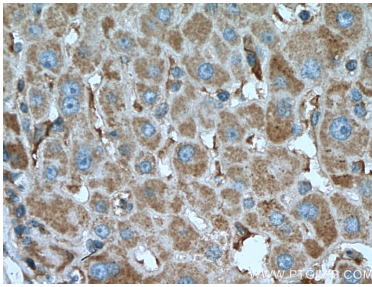
Various lysates were subjected to SDS PAGE followed by western blot with 67497-1-Ig (GNB3 antibody) at dilution of 1:3000 incubated at room temperature for 1.5 hours.



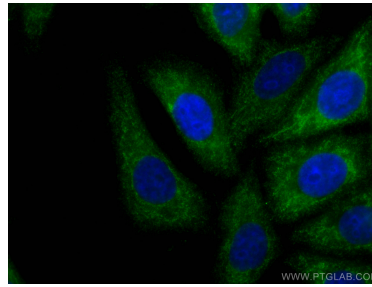
L02 cells were subjected to SDS PAGE followed by western blot with 67497-1-Ig (GNB3 antibody) at dilution of 1:3000 incubated at room temperature for 1.5 hours.



Immunohistochemical analysis of paraffin-embedded human liver cancer tissue slide using 67497-1-Ig (GNB3 antibody) at dilution of 1:1000 (under 10x lens). Heat mediated antigen retrieval with Tris-EDTA buffer (pH 9.0).



Immunohistochemical analysis of paraffin-embedded human liver cancer tissue slide using 67497-1-Ig (GNB3 antibody) at dilution of 1:1000 (under 40x lens). Heat mediated antigen retrieval with Tris-EDTA buffer (pH 9.0).



Immunofluorescent analysis of (-20°C Ethanol) fixed HepG2 cells using GNB3 antibody (67497-1-Ig, Clone: 2B6E1) at dilution of 1:400 and Coralite® 488-Conjugated AffiniPure Goat Anti-Mouse IgG(H+L).