

Nur für Forschungszwecke

RAN Monoklonaler Antikörper

Katalog-Nr.:67500-1-Ig



Allgemeine Informationen

Katalog-Nr.: 67500-1-Ig	GenBank-Zugangsnummer: BC004272	Reinigungsmethode: Protein-A-Reinigung
Größe: 150ul, Konzentration: 1700 µg/ml von 5901 Nanodrop und 1000 µg/ml durch die Bradford-Methode mit BSA als Standard;	GeneID (NCBI): Vollständiger Name: RAN, member RAS oncogene family	CloneNo.: 1B11E1
Wirt: Maus	Berechnete Masse: 25 kDa	Empfohlene Verdünnungen: WB 1:5000-1:50000 IHC 1:200-1:800 IF 1:200-1:800
Isotyp: IgG2b	Beobachtete Masse: 24 kDa	
Immunogen Katalognummer: AG30034		

Anwendungen

Geprüfte Anwendungen:

IF, IHC, WB, ELISA

Getestete Reaktivität:

Human, Maus, Ratte

Hinweis-IHC: Antigenmaskierung mit TE-Puffer pH 9,0 empfohlen. (*) Wahlweise kann die Antigenmaskierung auch mit Citratpuffer pH 6,0 erfolgen.

Positivkontrollen:

WB: HeLa-Zellen, 4T1-Zellen, HEK-293-Zellen, HepG2-Zellen, Jurkat-Zellen, NIH/3T3-Zellen

IHC: humanes Kolonkarzinomgewebe, humanes Mammakarzinomgewebe

IF: humanes Mammakarzinomgewebe,

Hintergrundinformationen

RAN is also named as ARA24, Ras-like protein TC4 and GTPase Ran, and belongs to the small GTPase superfamily family and the Ran family. GTPase Ran switches between a cytoplasmic GDP- and a nuclear GTP-bound state by nucleotide exchange and GTP hydrolysis (PMID:7819259, PMID:32528950). RAN (GTP-bound form) triggers microtubule assembly at mitotic chromosomes and is required for normal mitotic spindle assembly and chromosome segregation (PMID:10408446, PMID:29040603, PMID:32528950).

Lagerung

Lagerungsbedingungen:

Bei -20°C lagern. Nach dem Versand ein Jahr lang stabil

Lagerungspuffer:

PBS mit 0.02% Natriumazid und 50% Glycerin pH 7.3.

Aliquotieren ist nicht notwendig bei -20°C Lagerung

*** 20ul-Größen enthalten 0.1% BSA

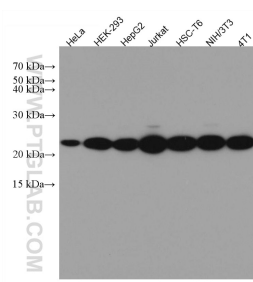
For technical support and original validation data for this product please contact:

T: 1 (888) 4PTGLAB (1-888-478-4522) (toll free in USA), or 1(312) 455-8498 (outside USA)

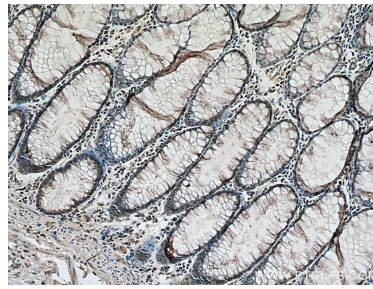
E: proteintech@ptglab.com
W: ptglab.com

This product is exclusively available under Proteintech Group brand and is not available to purchase from any other manufacturer.

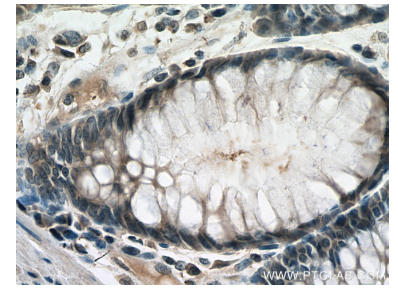
Ausgewählte Validierungsdaten



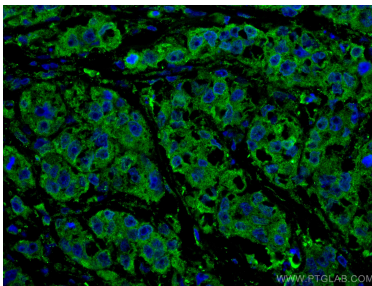
Various lysates were subjected to SDS PAGE followed by western blot with 67500-1-Ig (RAN antibody) at dilution of 1:10000 incubated at room temperature for 1.5 hours.



Immunohistochemical analysis of paraffin-embedded human colon cancer tissue slide using 67500-1-Ig (RAN antibody) at dilution of 1:400 (under 10x lens). Heat mediated antigen retrieval with Tris-EDTA buffer (pH 9.0).



Immunohistochemical analysis of paraffin-embedded human colon cancer tissue slide using 67500-1-Ig (RAN antibody) at dilution of 1:400 (under 40x lens). Heat mediated antigen retrieval with Tris-EDTA buffer (pH 9.0).



Immunofluorescent analysis of (4% PFA) fixed human breast cancer tissue using RAN antibody (67500-1-Ig, Clone: 1B11E1) at dilution of 1:400 and CoraLite®488-Conjugated AffiniPure Goat Anti-Mouse IgG(H+L).