

Nur für Forschungszwecke

# TMF1 Monoklonaler Antikörper

Katalog-Nr.:67505-1-Ig

Vorgestelltes Produkt



## Allgemeine Informationen

Katalog-Nr.:

67505-1-Ig

Größe:

150ul, Konzentration: 2000 µg/ml von7110

Nanodrop und 1000 µg/ml durch die Bradford-Methode mit BSA als Standard;

Wirt:

Maus

Isotyp:

IgG1

Immunogen Katalognummer:

AG17666

GenBank-Zugangsnummer:

BC126123

GeneID (NCBI):

7110

Vollständiger Name:

TATA element modulatory factor 1

Berechnete Masse:

1093 aa, 123 kDa

Beobachtete Masse:

150-160 kDa

Reinigungsmethode:

Protein-A-Reinigung

CloneNo.:

3G12F2

Empfohlene Verdünnungen:

WB 1:5000-1:50000

IF 1:50-1:500

## Anwendungen

Geprüfte Anwendungen:

IF, WB, ELISA

Getestete Reaktivität:

Human, Maus, Ratte

Positivkontrollen:

WB : LNCaP-Zellen, HEK-293-Zellen, HeLa-Zellen, HepG2-Zellen, Jurkat-Zellen, K-562-Zellen, NIH/3T3-Zellen

IF : HepG2-Zellen,

## Hintergrundinformationen

TMF1, also named as ARA160, is a potential coactivator of the androgen receptor. TMF1 mediates STAT3 degradation. TMF1 plays critical roles in two RAB6-dependent retrograde transport processes: one from endosomes to the Golgi and the other from the Golgi to the ER. TMF1 binds the HIV-1 TATA element and inhibits transcriptional activation by the TATA-binding protein (TBP). The antibody is specific to TMF1. TMF1 can be detected as 150-160 kDa after posttranslational modification.

## Lagerung

Lagerungsbedingungen:

Bei -20°C lagern. Nach dem Versand ein Jahr lang stabil

Lagerungspuffer:

PBS mit 0.02% Natriumazid und 50% Glycerin pH 7.3.

Aliquotieren ist nicht notwendig bei -20°C Lagerung

\*\*\* 20ul-Größen enthalten 0.1% BSA

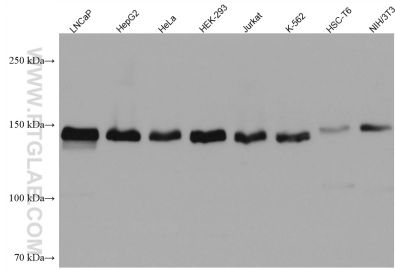
For technical support and original validation data for this product please contact:

T: 1 (888) 4PTGLAB (1-888-478-4522) (toll free in USA), or 1(312) 455-8498 (outside USA)

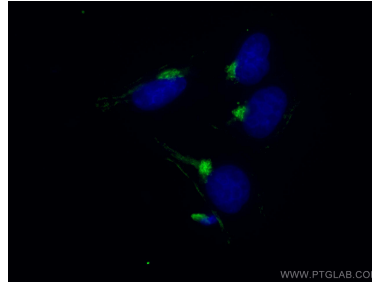
E: proteintech@ptglab.com  
W: ptglab.com

This product is exclusively available under Proteintech Group brand and is not available to purchase from any other manufacturer.

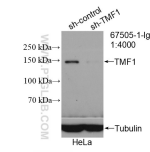
## Ausgewählte Validierungsdaten



Various lysates were subjected to SDS PAGE followed by western blot with 67505-1-Ig (TMF1 antibody) at dilution of 1:10000 incubated at room temperature for 1.5 hours.



Immunofluorescent analysis of (4% PFA) fixed HepG2 cells using 67505-1-Ig (TMF1 antibody) at dilution of 1:100 and CoraLite488-Conjugated AffiniPure Goat Anti-Mouse IgG(H+L).



WB result of TMF1 antibody (67505-1-Ig; 1:4000; incubated at room temperature for 1.5 hours) with sh-Control and sh-TMF1 transfected HeLa cells.