

Nur für Forschungszwecke

# RBM15B Monoklonaler Antikörper

Katalog-Nr.: 67506-1-Ig **1 Publikationen**



## Allgemeine Informationen

<b>Katalog-Nr.:</b> 67506-1-Ig	<b>GenBank-Zugangsnummer:</b> BC001367	<b>Reinigungsmethode:</b> Protein-A-Reinigung
<b>Größe:</b> 150ul, Konzentration: 2400 µg/ml von 29890 Nanodrop und 1000 µg/ml durch die Bradford-Methode mit BSA als Standard;	<b>GeneID (NCBI):</b> 29890	<b>CloneNo.:</b> 1C2C11
<b>Wirt:</b> Maus	<b>Vollständiger Name:</b> RNA binding motif protein 15B	<b>Empfohlene Verdünnungen:</b> WB 1:1000-1:6000 IHC 1:500-1:2000
<b>Isotyp:</b> IgG1	<b>Berechnete Masse:</b> 890 aa, 97 kDa	
<b>Immunogen Katalognummer:</b> AG17853	<b>Beobachtete Masse:</b> 105 kDa	

## Anwendungen

<b>Geprüfte Anwendungen:</b> IHC, WB, ELISA	<b>Positivkontrollen:</b> <b>WB:</b> HeLa-Zellen, A549-Zellen, COLO 320-Zellen, HEK-293-Zellen, Jurkat-Zellen, K-562-Zellen, LNCaP-Zellen, THP-1-Zellen <b>IHC:</b> humanes Kolonkarzinomgewebe, humanes Kolongewebe, Ratten-Kolongewebe
<b>In Publikationen genannte Anwendungen:</b> WB	
<b>Getestete Reaktivität:</b> Human, Ratte	
<b>Zitierte Arten:</b> Human	
<b>Hinweis-IHC: Antigenmaskierung mit TE-Puffer pH 9,0 empfohlen. (*) Wahlweise kann die Antigenmaskierung auch mit Citratpuffer pH 6,0 erfolgen.</b>	

## Hintergrundinformationen

RBM15B, one members of the SPEN (Split-end) family of proteins, have repressor function in several signaling pathways and may bind to RNA through interaction with spliceosome components. Present polyclonal anti-RBM15B antibody was produced by immunizing animals with C-terminus of RBM15B, which homolog with a short form of RBM15B(563aa, ~70kDa).

## Bemerkenswerte Veröffentlichungen

Verfasser	Pubmed ID	Journal	Anwendung
Keiko Horiuchi	34582888	J Biol Chem	WB

## Lagerung

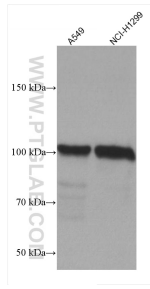
**Lagerungsbedingungen:**  
Bei -20°C lagern. Nach dem Versand ein Jahr lang stabil  
**Lagerungspuffer:**  
PBS mit 0.02% Natriumazid und 50% Glycerin pH 7.3.  
Aliquotieren ist nicht notwendig bei -20°C Lagerung

**\*\*\* 20ul-Größen enthalten 0.1% BSA**

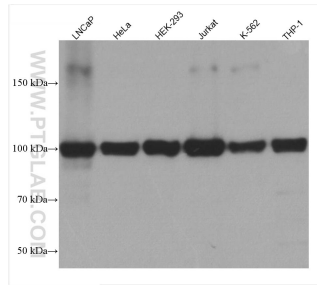
For technical support and original validation data for this product please contact:  
T: 1 (888) 4PTGLAB (1-888-478-4522) (toll free in USA), or 1(312) 455-8498 (outside USA)  
E: proteintech@ptglab.com  
W: ptglab.com

**This product is exclusively available under Proteintech Group brand and is not available to purchase from any other manufacturer.**

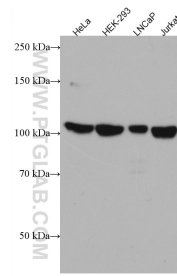
## Ausgewählte Validierungsdaten



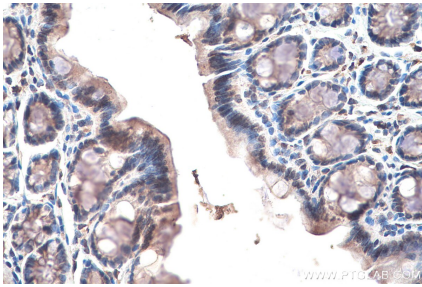
A549 cells were subjected to SDS PAGE followed by western blot with 67506-1-Ig (RBM15B antibody) at dilution of 1:10000 incubated at room temperature for 1.5 hours.



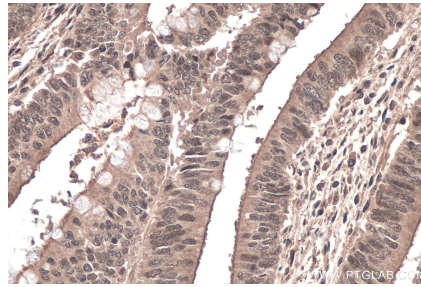
Various lysates were subjected to SDS PAGE followed by western blot with 67506-1-Ig (RBM15B antibody) at dilution of 1:10000 incubated at room temperature for 1.5 hours.



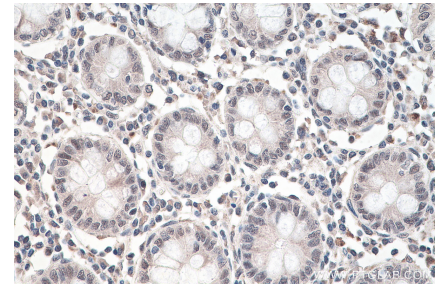
Various lysates were subjected to SDS PAGE followed by western blot with 67506-1-Ig (RBM15B antibody) at dilution of 1:3000 incubated at room temperature for 1.5 hours.



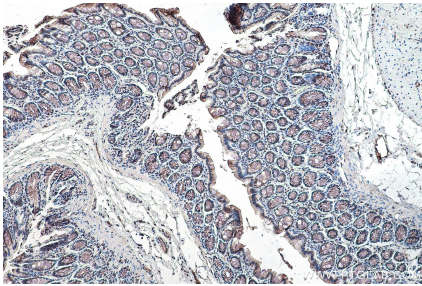
Immunohistochemical analysis of paraffin-embedded rat colon tissue slide using 67506-1-Ig (RBM15B antibody) at dilution of 1:2000 (under 40x lens). Heat mediated antigen retrieval with Tris-EDTA buffer (pH 9.0).



Immunohistochemical analysis of paraffin-embedded human colon cancer tissue slide using 67506-1-Ig (RBM15B antibody) at dilution of 1:1000 (under 40x lens). Heat mediated antigen retrieval with Tris-EDTA buffer (pH 9.0).



Immunohistochemical analysis of paraffin-embedded human colon tissue slide using 67506-1-Ig (RBM15B antibody) at dilution of 1:2000 (under 40x lens). Heat mediated antigen retrieval with Tris-EDTA buffer (pH 9.0).



Immunohistochemical analysis of paraffin-embedded rat colon tissue slide using 67506-1-Ig (RBM15B antibody) at dilution of 1:2000 (under 10x lens). Heat mediated antigen retrieval with Tris-EDTA buffer (pH 9.0).