

Allgemeine Informationen

Katalog-Nr.: 67542-1-Ig	GenBank-Zugangsnummer: BC007245	Reinigungsmethode: Protein-A-Reinigung
Größe: 150ul , Konzentration: 2100 µg/ml von389 Nanodrop und 1000 µg/ml durch die Bradford-Methode mit BSA als Standard;	GeneID (NCBI): ras homolog gene family, member C	CloneNo.: 1G1C1
Wirt: Maus	Berechnete Masse: 22 kDa	Empfohlene Verdünnungen: WB 1:5000-1:20000 IHC 1:400-1:1600 IF 1:200-1:800
Isotyp: IgG1	Beobachtete Masse: 22 kDa	
Immunogen Katalognummer: AG14633		

Anwendungen

Geprüfte Anwendungen:

FC, IF, IHC, WB, ELISA

Getestete Reaktivität:

Human, Maus, Ratte

Hinweis-IHC: Antigendemaskierung mit TE-Puffer pH 9,0 empfohlen. (*) Wahlweise kann die Antigendemaskierung auch mit Citratpuffer pH 6,0 erfolgen.

Positivkontrollen:

WB : LNCaP-Zellen, C6-Zellen, HEK-293-Zellen, HeLa-Zellen, HepG2-Zellen, Jurkat-Zellen, K-562-Zellen, NIH/3T3-Zellen, PC-12-Zellen, RAW 264.7-Zellen

IHC : humanes Dünndarmgewebe,

IF : HeLa-Zellen,

Hintergrundinformationen

Ras homolog family member C (RHOC) encodes a Rho-related GTP-binding protein, which belongs to small GTPase superfamily and also Rho family. RHOC. Regulates a signal transduction pathway linking plasma membrane receptors to the assembly of focal adhesions and actin stress fibers. Expression of RHOC contributes to metastatic phenotype of melanoma cells and is associated with multiple cancers including gastric carcinomas, ovarian carcinomas and breast cancer as well.

Lagerung

Lagerungsbedingungen:

Bei -20°C lagern. Nach dem Versand ein Jahr lang stabil

Lagerungspuffer:

PBS mit 0.02% Natriumazid und 50% Glycerin pH 7.3.

Aliquotieren ist nicht notwendig bei -20°C Lagerung

***** 20ul-Größen enthalten 0.1% BSA**

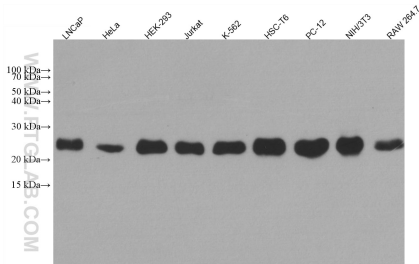
For technical support and original validation data for this product please contact:

T: 1 (888) 4PTGLAB (1-888-478-4522) (toll free in USA), or 1(312) 455-8498 (outside USA)

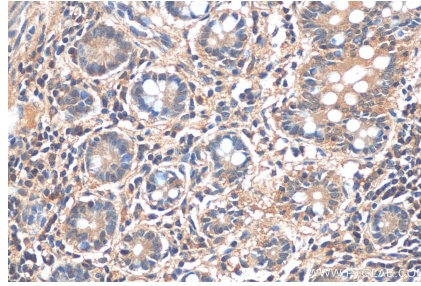
E: proteintech@ptglab.com
W: ptglab.com

This product is exclusively available under Proteintech Group brand and is not available to purchase from any other manufacturer.

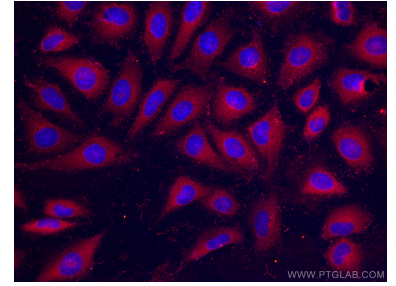
Ausgewählte Validierungsdaten



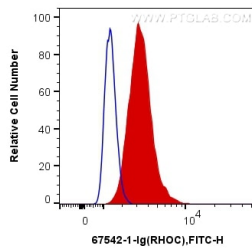
Various lysates were subjected to SDS PAGE followed by western blot with 67542-1-Ig (RHOC antibody) at dilution of 1:20000 incubated at room temperature for 1.5 hours.



Immunohistochemical analysis of paraffin-embedded human small intestine tissue slide using 67542-1-Ig (RHOC antibody) at dilution of 1:800 (under 40x lens).



Immunofluorescent analysis of (4% PFA) fixed HeLa cells using RHOC antibody (67542-1-Ig, Clone: 1G1C1) at dilution of 1:400 and CoraLite®488-Conjugated AffiniPure Goat Anti-Mouse IgG(H+L).



1×10^6 HepG2 cells were intracellularly stained with 0.4 μ g Anti-Human RHOC (67542-1-Ig, Clone: 1G1C1) and CoraLite®488-Conjugated AffiniPure Goat Anti-Mouse IgG(H+L) at dilution 1:1000 (red), or 0.4 μ g Control Antibody. Cells were fixed with 4% PFA and permeabilized with Flow Cytometry Perm Buffer (PF00011-C).