

Nur für Forschungszwecke

PAK6 Monoklonaler Antikörper

Katalog-Nr.:67562-1-Ig



Allgemeine Informationen

Katalog-Nr.: 67562-1-Ig	GenBank-Zugangsnummer: BC035596	Reinigungsmethode: Protein-A-Reinigung
Größe: 150ul , Konzentration: 1200 µg/ml von56924 Nanodrop und 520 µg/ml durch die Bradford-Methode mit BSA als Standard;	GeneID (NCBI): 56924	CloneNo.: 3G8C1
Wirt: Maus	Vollständiger Name: p21 protein (Cdc42/Rac)-activated kinase 6	Empfohlene Verdünnungen: WB 1:1000-1:4000 IF 1:400-1:1600
Isotyp: IgG1	Berechnete Masse: 681 aa, 75 kDa	
Immunogen Katalognummer: AG27692	Beobachtete Masse: 70-75 kDa	

Anwendungen

Geprüfte Anwendungen: IF, WB, ELISA	Positivkontrollen: WB : HEK-293-Zellen, K-562-Zellen
Getestete Reaktivität: Human	IF : HEK-293-Zellen,

Hintergrundinformationen

PAK6(p21-activated kinase 6) is a serine/threonine kinase belonging to the p21-activated kinase (PAK) family. This protein plays a role in the regulation of gene transcription and may protect cells from apoptosis through phosphorylation of BAD. Northern blot analysis revealed that PAK6 is highly expressed in testis and prostate tissues (PMID:11278661).

Lagerung

Lagerungsbedingungen:
Bei -20°C lagern.
Lagerungspuffer:
PBS mit 0.02% Natriumazid und 50% Glycerin pH 7.3.
Aliquotieren ist nicht notwendig bei -20°C Lagerung

***** 20ul-Größen enthalten 0.1% BSA**

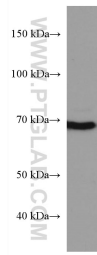
For technical support and original validation data for this product please contact:

T: 1 (888) 4PTGLAB (1-888-478-4522) (toll free
in USA), or 1(312) 455-8498 (outside USA)

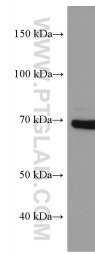
E: proteintech@ptglab.com
W: ptglab.com

This product is exclusively available under Proteintech Group brand and is not available to purchase from any other manufacturer.

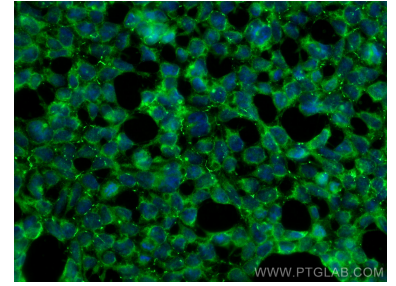
Ausgewählte Validierungsdaten



K-562 cells were subjected to SDS PAGE followed by western blot with 67562-1-Ig (PAK6 antibody) at dilution of 1:2000 incubated at room temperature for 1.5 hours.



HEK-293 cells were subjected to SDS PAGE followed by western blot with 67562-1-Ig (PAK6 antibody) at dilution of 1:2000 incubated at room temperature for 1.5 hours.



Immunofluorescent analysis of (-20°C Ethanol) fixed HEK-293 cells using PAK6 antibody (67562-1-Ig, Clone: 3G8C1) at dilution of 1:400 and CoraLite®488-Conjugated AffiniPure Goat Anti-Mouse IgG(H+L).