

## Allgemeine Informationen

<b>Katalog-Nr.:</b> 67567-1-Ig	<b>GenBank-Zugangsnummer:</b> BC011708	<b>Reinigungsmethode:</b> Protein-A-Reinigung
<b>Größe:</b> 150ul , Konzentration: 2023 µg/ml von 3489 Nanodrop und 1000 µg/ml durch die Bradford-Methode mit BSA als Standard;	<b>GeneID (NCBI):</b> insulin-like growth factor binding protein 6	<b>CloneNo.:</b> 1D12B3
<b>Wirt:</b> Maus	<b>Berechnete Masse:</b> 25 kDa	<b>Empfohlene Verdünnungen:</b> WB 1:1000-1:4000
<b>Isotyp:</b> IgG2b	<b>Beobachtete Masse:</b> 30-33 kDa	
<b>Immunogen Katalognummer:</b> AG30050		

## Anwendungen

<b>Geprüfte Anwendungen:</b> WB, ELISA	<b>Positivkontrollen:</b> WB : U-87 MG-Zellen, humanes Hodengewebe
<b>In Publikationen genannte Anwendungen:</b> IHC	
<b>Getestete Reaktivität:</b> Human	
<b>Zitierte Arten:</b> Human	

## Hintergrundinformationen

Insulin-like growth factor (IGF) binding protein (IGFBP6), a 240 amino acid protein, contains an IGFBP N-terminal domain and a thyroglobulin type-1 domain. It modulates the activity of IGF and shows independent effects of IGF, such as growth inhibition and apoptosis. It can decrease the proliferation and survival of cancer cells such as lung cancer cells and naso-pharyngeal cancer cells. IGFBP-6 is distinctive for its 50-fold higher binding affinity for IGF-II over IGF-I and this specificity makes it an attractive potential therapeutic candidate for IGF-II-dependent pediatric malignancies such as rhabdomyosarcoma (RMS). In addition, it was found that IGFBP6 can promote the migration of RMS cells in an IGF-independent manner, and MAPK pathways were involved in this process. Further study reported that IGFBP6 is one of most highly expressed proteins in varicose vein tissues and is involved in the proliferation of vascular smooth muscle cells (VSMCs), which may provide insights into the underlying pathogenesis of varicose vein.

## Bemerkenswerte Veröffentlichungen

Verfasser	Pubmed ID	Journal	Anwendung
Zhitao Zong	34396926	Neurol Res	IHC

## Lagerung

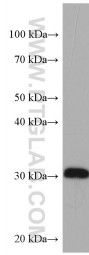
**Lagerungsbedingungen:**  
Bei -20°C lagern. Nach dem Versand ein Jahr lang stabil  
**Lagerungspuffer:**  
PBS mit 0.02% Natriumazid und 50% Glycerin pH 7.3.  
 Aliquotieren ist nicht notwendig bei -20°C Lagerung

**\*\*\* 20ul-Größen enthalten 0.1% BSA**

For technical support and original validation data for this product please contact:  
 T: 1 (888) 4PTGLAB (1-888-478-4522) (toll free in USA), or 1(312) 455-8498 (outside USA)  
 E: [proteintech@ptglab.com](mailto:proteintech@ptglab.com)  
 W: [ptglab.com](http://ptglab.com)

This product is exclusively available under Proteintech Group brand and is not available to purchase from any other manufacturer.

## Ausgewählte Validierungsdaten



U-87 MG cells were subjected to SDS PAGE followed by western blot with 67567-1-Ig (IGFBP6 antibody) at dilution of 1:2000 incubated at room temperature for 1.5 hours.