

Nur für Forschungszwecke

# CDK1 Monoklonaler Antikörper

Katalog-Nr.: 67575-1-Ig **7 Publikationen**



## Allgemeine Informationen

<b>Katalog-Nr.:</b> 67575-1-Ig	<b>GenBank-Zugangsnummer:</b> BC014563	<b>Reinigungsmethode:</b> Protein-A-Reinigung
<b>Größe:</b> 150ul, Konzentration: 1919 µg/ml von 983 Nanodrop und 1000 µg/ml durch die Bradford-Methode mit BSA als Standard;	<b>GeneID (NCBI):</b> 2A11E4	<b>CloneNo.:</b> 2A11E4
<b>Wirt:</b> Maus	<b>Vollständiger Name:</b> cell division cycle 2, G1 to S and G2 to M	<b>Empfohlene Verdünnungen:</b> 1:5000-1:50000
<b>Isotyp:</b> IgG2a	<b>Berechnete Masse:</b> 25 kDa	
<b>Immunogen Katalognummer:</b> AG29018	<b>Beobachtete Masse:</b> 34 kDa	

## Anwendungen

<b>Geprüfte Anwendungen:</b> FC, WB, ELISA	<b>Positivkontrollen:</b> WB: HEK-293-Zellen, A549-Zellen, HeLa-Zellen, Jurkat-Zellen, K-562-Zellen, NIH/3T3-Zellen
<b>In Publikationen genannte Anwendungen:</b> WB	
<b>Getestete Reaktivität:</b> Human, Maus, Ratte	
<b>Zitierte Arten:</b> Human, Maus	

## Hintergrundinformationen

CDK1, also named as CDC2, belongs to the protein kinase superfamily, CMGC Ser/Thr protein kinase family and CDC2/CDKX subfamily. CDK1 plays a key role in the control of the eukaryotic cell cycle. It is required in higher cells for entry into S-phase and mitosis. CDK1 is a catalytic subunit of the highly conserved protein kinase complex known as M-phase promoting factor (MPF), which is essential for G1/S and G2/M phase transitions of eukaryotic cell cycle. It is a component of the kinase complex that phosphorylates the repetitive C-terminus of RNA polymerase II. Mitotic cyclins stably associate with CDK1 and function as regulatory subunits. CDK1 has 2 isoforms produced by alternative splicing with the molecular mass of 34 kDa and 27 kDa.

## Bemerkenswerte Veröffentlichungen

Verfasser	Pubmed ID	Journal	Anwendung
Silu Hou	36427601	Food Chem Toxicol	WB
Chao Wu	34809653	Chin Med	WB
Ya Li	34003522	Mol Carcinog	WB

## Lagerung

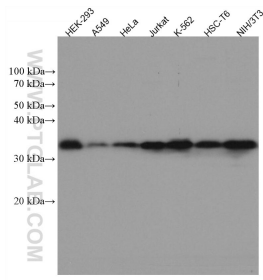
**Lagerungsbedingungen:**  
Bei -20°C lagern.  
**Lagerungspuffer:**  
PBS mit 0.02% Natriumazid und 50% Glycerin pH 7.3.  
Aliquotieren ist nicht notwendig bei -20°C Lagerung

\*\*\* 20ul-Größen enthalten 0.1% BSA

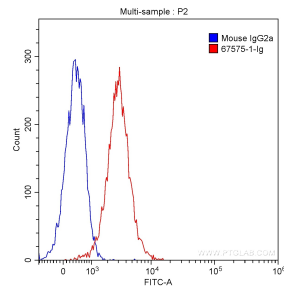
For technical support and original validation data for this product please contact:  
T: 1 (888) 4PTGLAB (1-888-478-4522) (toll free in USA), or 1(312) 455-8498 (outside USA)  
E: proteintech@ptglab.com  
W: ptglab.com

This product is exclusively available under Proteintech Group brand and is not available to purchase from any other manufacturer.

## Ausgewählte Validierungsdaten



Various lysates were subjected to SDS PAGE followed by western blot with 67575-1-Ig (CDK1 antibody) at dilution of 1:10000 incubated at room temperature for 1.5 hours.



$1 \times 10^6$  HeLa cells were intracellularly stained with 0.20  $\mu$ g Anti-Human CDK1 (67575-1-Ig, Clone: 2A11E4) and CoraLite@488-Conjugated AffiniPure Goat Anti-Mouse IgG(H+L) with dilution 1:1000 (red), or stained with 0.20  $\mu$ g Mouse IgG2a Isotype Control and CoraLite@488-Conjugated AffiniPure Goat Anti-Mouse IgG(H+L) with dilution 1:1000 (blue). Cells were fixed with 90% MeOH.