

Allgemeine Informationen

Katalog-Nr.: 67579-1-Ig	GenBank-Zugangsnummer: BC043399	Reinigungsmethode: Protein-G-Reinigung
Größe: 150ul , Konzentration: 1000 µg/ml von2120 Nanodrop und 556 µg/ml durch die Bradford-Methode mit BSA als Standard;	GeneID (NCBI): ets variant 6	CloneNo.: 2A5A2
Wirt: Maus	Vollständiger Name: ets variant 6	Empfohlene Verdünnungen: WB 1:1000-1:6000 IHC 1:50-1:500
Isotyp: IgG1	Berechnete Masse: 452 aa, 53 kDa	
Immunogen Katalognummer: AG30054	Beobachtete Masse: 60 kDa	

Anwendungen

Geprüfte Anwendungen: IHC, WB, ELISA	Positivkontrollen:
Getestete Reaktivität: Human	WB : Jurkat-Zellen, A431-Zellen, K-562-Zellen, THP-1-Zellen, U2OS-Zellen
Hinweis-IHC: Antigenmaskierung mit TE-Puffer pH 9,0 empfohlen. (*) Wahlweise kann die Antigenmaskierung auch mit Citratpuffer pH 6,0 erfolgen.	IHC : humanes Mammakarzinomgewebe, humanes Lungenkarzinomgewebe

Hintergrundinformationen

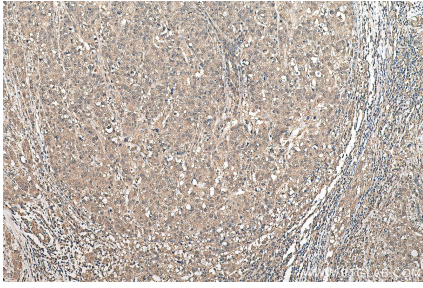
ETV6(ETS Variant Transcription Factor 6), also known as TEL, is a Protein Coding gene. ETV6 is a member of the ETS family of transcription factors encoded by the ETS variant 6 gene (ETV6), located on chromosome 12p13.2. ETV6 protein contains 3 domains: a) the pointed N-terminal (i.e. PNT) domain which forms oligomer partners with itself as well as other transcription factors (e.g. FLI1) and is required for ETV6's transcriptional repressing activity; b) the central regulatory domain; and c) the C-terminal DNA-binding domain(PMID: 22578774). ETV6 is highly expressed in early hematopoietic progenitor cells(HPCs) and is essential for hematopoiesis in the bone marrow(PMID: 31248877).

Lagerung

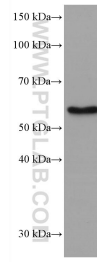
Lagerungsbedingungen:
Bei -20°C lagern.
Lagerungspuffer:
PBS with 0.1% sodium azide and 50% glycerol pH 7.3.
Aliquotieren ist nicht notwendig bei -20°C Lagerung

*** 20ul-Größen enthalten 0.1% BSA

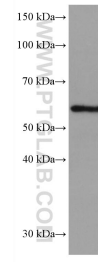
Ausgewählte Validierungsdaten



Immunohistochemical analysis of paraffin-embedded human breast cancer tissue slide using 67579-1-Ig (ETV6 antibody) at dilution of 1:100 (under 10x lens). Heat mediated antigen retrieval with Tris-EDTA buffer (pH 9.0).



Jurkat cells were subjected to SDS PAGE followed by western blot with 67579-1-Ig (ETV6 antibody) at dilution of 1:3000 incubated at room temperature for 1.5 hours.



K-562 cells were subjected to SDS PAGE followed by western blot with 67579-1-Ig (ETV6 antibody) at dilution of 1:3000 incubated at room temperature for 1.5 hours.