

Allgemeine Informationen

Katalog-Nr.: 67583-1-Ig	GenBank-Zugangsnummer: BC007090	Reinigungsmethode: Protein-A-Reinigung
Größe: 150ul , Konzentration: 2500 µg/ml von Nanodrop und 1500 µg/ml durch die Bradford-Methode mit BSA als Standard;	GeneID (NCBI): 3094	CloneNo.: 1G3E4
Wirt: Maus	Vollständiger Name: histidine triad nucleotide binding protein 1	Empfohlene Verdünnungen: WB 1:500-1:2000 IHC 1:50-1:500 IF 1:200-1:800
Isotyp: IgG2a	Berechnete Masse: 14 kDa	
Immunogen Katalognummer: AG16662	Beobachtete Masse: 14 kDa	

Anwendungen

Geprüfte Anwendungen: IF, IHC, WB, ELISA	Positivkontrollen:
Getestete Reaktivität: Human	WB : LNCaP-Zellen, HeLa-Zellen, HepG2-Zellen, Jurkat-Zellen, K-562-Zellen
Hinweis-IHC: Antigendemaskierung mit TE-Puffer pH 9,0 empfohlen. (*) Wahlweise kann die Antigendemaskierung auch mit Citratpuffer pH 6,0 erfolgen.	IHC : humanes Mammakarzinomgewebe,
	IF : HeLa-Zellen,

Hintergrundinformationen

HINT1(Histidine triad nucleotide-binding protein 1) is also named as HINT, PKCI1, PRKCNH1, which is a member of the histidine triad (HIT) family, highly conserved in diverse species and ubiquitously expressed in mammalian tissues. It hydrolyzes adenosine 5'-monophosphoramidate substrates such as AMP-morpholidate, AMP-N-alanine methyl ester, AMP-alpha-acetyl lysine methyl ester and AMP-NH₂.

Lagerung

Lagerungsbedingungen:
Bei -20°C lagern.
Lagerungspuffer:
PBS mit 0.02% Natriumazid und 50% Glycerin pH 7.3.
Aliquotieren ist nicht notwendig bei -20°C Lagerung

*** 20ul-Größen enthalten 0.1% BSA

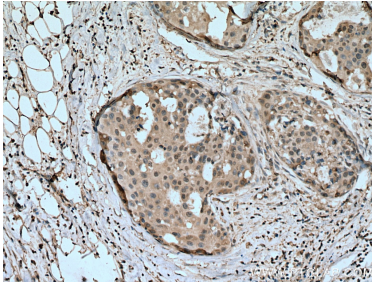
For technical support and original validation data for this product please contact:

T: 1 (888) 4PTGLAB (1-888-478-4522) (toll free in USA), or 1(312) 455-8498 (outside USA)

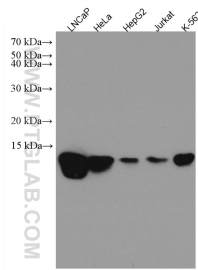
E: proteintech@ptglab.com
W: ptglab.com

This product is exclusively available under Proteintech Group brand and is not available to purchase from any other manufacturer.

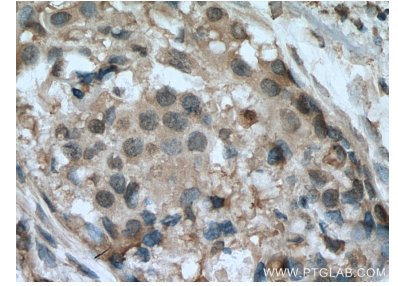
Ausgewählte Validierungsdaten



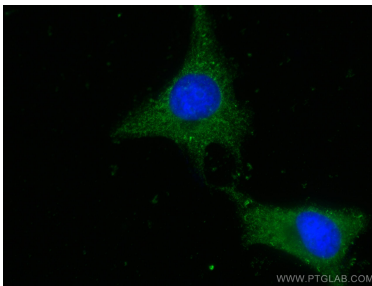
Immunohistochemical analysis of paraffin-embedded human breast cancer tissue slide using 67583-1-Ig (HINT1 antibody) at dilution of 1:200 (under 10x lens). Heat mediated antigen retrieval with Tris-EDTA buffer (pH 9.0).



Various lysates were subjected to SDS PAGE followed by western blot with 67583-1-Ig (HINT1 antibody) at dilution of 1:2000 incubated at room temperature for 1.5 hours.



Immunohistochemical analysis of paraffin-embedded human breast cancer tissue slide using 67583-1-Ig (HINT1 antibody) at dilution of 1:200 (under 40x lens). Heat mediated antigen retrieval with Tris-EDTA buffer (pH 9.0).



Immunofluorescent analysis of (-20°C Ethanol) fixed HeLa cells using HINT1 antibody (67583-1-Ig, Clone: 1G3E4) at dilution of 1:400 and CoraLite®488-Conjugated AffiniPure Goat Anti-Mouse IgG(H+L).