

Nur für Forschungszwecke

TERF1 Monoklonaler Antikörper

Katalog-Nr.:67592-1-Ig



Allgemeine Informationen

Katalog-Nr.: 67592-1-Ig	GenBank-Zugangsnummer: BC029378	Reinigungsmethode: Protein-G-Reinigung
Größe: 150ul , Konzentration: 1700 µg/ml von7013 Nanodrop und 1000 µg/ml durch die Bradford-Methode mit BSA als Standard;	GeneID (NCBI): 1D10G4	CloneNo.: 1D10G4
Wirt: Maus	Vollständiger Name: telomeric repeat binding factor (NIMA-interacting) 1	Empfohlene Verdünnungen: WB 1:1000-1:6000
Isotyp: IgG1	Berechnete Masse: 439 aa, 50 kDa	
Immunogen Katalognummer: AG12540	Beobachtete Masse: 48-50 kDa	

Anwendungen

Geprüfte Anwendungen: WB,ELISA	Positivkontrollen: WB : K-562-Zellen, HEK-293-Zellen, Jurkat-Zellen
Getestete Reaktivität: Human, Maus, Ratte	

Hintergrundinformationen

Telomeres are nucleoprotein complexes located at chromosome ends that consist of tandem arrays of TTAGGG repeats bound to specific proteins. Telomeres protect chromosome ends from degradation and end-to-end fusions, prevent activation of DNA damage checkpoints, and modulate the maintenance of telomeric DNA by telomerase. TERF1 (telomeric repeat-binding factor 1) binds the telomeric double-stranded TTAGGG repeat and negatively regulates telomere length. It's one component of the shelterin complex, which involved in the regulation of telomere length and protection.

Lagerung

Lagerungsbedingungen:
Bei -20°C lagern.
Lagerungspuffer:
PBS with 0.1% sodium azide and 50% glycerol pH 7.3.
Aliquotieren ist nicht notwendig bei -20°C Lagerung

*** 20ul-Größen enthalten 0.1% BSA

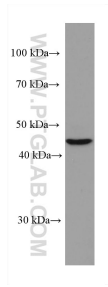
For technical support and original validation data for this product please contact:

T: 1 (888) 4PTGLAB (1-888-478-4522) (toll free
in USA), or 1(312) 455-8498 (outside USA)

E: proteintech@ptglab.com
W: ptglab.com

This product is exclusively available under Proteintech Group brand and is not available to purchase from any other manufacturer.

Ausgewählte Validierungsdaten



K-562 cells were subjected to SDS PAGE followed by western blot with 67592-1-Ig (TERF1 antibody) at dilution of 1:3000 incubated at room temperature for 1.5 hours.