

Nur für Forschungszwecke

Importin Beta Monoklonaler Antikörper

Katalog-Nr.:67597-1-Ig



Allgemeine Informationen

Katalog-Nr.: 67597-1-Ig	GenBank-Zugangsnummer: BC003572	Reinigungsmethode: Protein-A-Reinigung
Größe: 150ul, Konzentration: 1500 µg/ml von 3837 Nanodrop und 780 µg/ml durch die Bradford-Methode mit BSA als Standard;	GeneID (NCBI): Vollständiger Name: karyopherin (importin) beta 1	CloneNo.: 1A12B1
Wirt: Maus	Berechnete Masse: 97 kDa	Empfohlene Verdünnungen: WB 1:2000-1:6000 IHC 1:200-1:800
Isotyp: IgG2b	Beobachtete Masse: 95-97 kDa	
Immunogen Katalognummer: AG23094		

Anwendungen

Geprüfte Anwendungen: FC, IHC, WB, ELISA	Positivkontrollen: WB : HeLa-Zellen, HepG2-Zellen, Jurkat-Zellen, K-562-Zellen IHC : humanes Kolonkarzinomgewebe,
Getestete Reaktivität: Human	
Hinweis-IHC: Antigenmaskierung mit TE-Puffer pH 9,0 empfohlen. (*) Wahlweise kann die Antigenmaskierung auch mit Citratpuffer pH 6,0 erfolgen.	

Hintergrundinformationen

Importin beta1, also known karyopherin beta or KPNB1, is a nuclear transport receptor that plays a key role in the nuclear import process. Importin beta1 and importin alpha work in concert to transport cargo into the nucleus, functioning as an essential component of the classical nuclear localization signal (NLS) pathway. Elevated expression of importin beta1 has been found in cervical tumors. (22125623)

Lagerung

Lagerungsbedingungen:
Bei -20°C lagern. Nach dem Versand ein Jahr lang stabil
Lagerungspuffer:
PBS mit 0.02% Natriumazid und 50% Glycerin pH 7.3.
Aliquotieren ist nicht notwendig bei -20°C Lagerung

*** 20ul-Größen enthalten 0.1% BSA

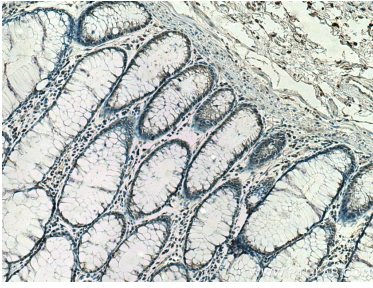
For technical support and original validation data for this product please contact:

T: 1 (888) 4PTGLAB (1-888-478-4522) (toll free in USA), or 1(312) 455-8498 (outside USA)

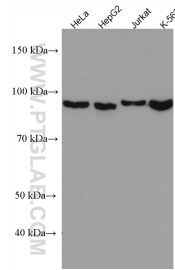
E: proteintech@ptglab.com
W: ptglab.com

This product is exclusively available under Proteintech Group brand and is not available to purchase from any other manufacturer.

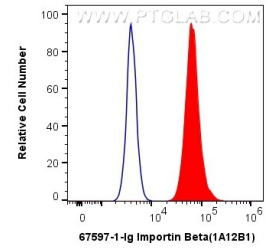
Ausgewählte Validierungsdaten



Immunohistochemical analysis of paraffin-embedded human colon cancer tissue slide using 67597-1-Ig (Importin beta antibody) at dilution of 1:400 (under 10x lens). Heat mediated antigen retrieval with Tris-EDTA buffer (pH 9.0).



Various lysates were subjected to SDS PAGE followed by western blot with 67597-1-Ig (Importin beta antibody) at dilution of 1:5000 incubated at room temperature for 1.5 hours.



1x10⁶ Jurkat cells were intracellularly stained with 0.5 ug Anti-Human Importin Beta (67597-1-Ig, Clone:1A12B1) and Coralite@488-Conjugated AffiniPure Goat Anti-Mouse IgG(H+L) at dilution 1:1000 (red), or 0.5 ug Control Antibody. Cells were fixed with 4% PFA and permeabilized with Flow Cytometry Perm Buffer (PF00011-C).