

Nur für Forschungszwecke

CREB3L1,OASIS Monoklonaler Antikörper



Katalog-Nr.:67617-1-Ig

Allgemeine Informationen

Katalog-Nr.: 67617-1-Ig	GenBank-Zugangsnummer: BC015781	Reinigungsmethode: Protein-G-Reinigung
Größe: 150ul , Konzentration: 1700 µg/ml von90993 Nanodrop und 1000 µg/ml durch die Bradford-Methode mit BSA als Standard;	GeneID (NCBI): 90993	CloneNo.: 2B5B4
Wirt: Maus	Vollständiger Name: cAMP responsive element binding protein 3-like 1	Empfohlene Verdünnungen: WB 1:2000-1:10000
Isotyp: IgG1	Berechnete Masse: 57 kDa	
Immunogen Katalognummer: AG28042	Beobachtete Masse: 58 kDa	

Anwendungen

Geprüfte Anwendungen: FC, WB, ELISA	Positivkontrollen: WB : HeLa-Zellen, 4T1-Zellen, A375-Zellen, A549- Zellen, HepG2-Zellen, NIH/3T3-Zellen
Getestete Reaktivität: Human, Maus, Ratte	

Hintergrundinformationen

Cyclic AMP-responsive element-binding protein 3-like protein 1(CREB3L1) belongs to a family of transcription factors that are synthesized as membrane-bound precursors in the endoplasmic reticulum (ER) and then transported to the Golgi where they are activated through regulated intramembrane proteolysis (RIP). Also it participates in ER-stress response in astrocytes in the central nervous system. It may have a role in gliosis, and involves in activation of transcription through box-B element but not CRE. CREB3L1 acts as a transcription repressor in proliferation of virus-infected cell. The full-length precursor form (approximately 84 kDa) of CREB3L1 and the matured form of CREB3L1 is 58 kDa. (PMID: 20668028)

Lagerung

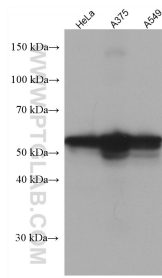
Lagerungsbedingungen:
Bei -20°C lagern. Nach dem Versand ein Jahr lang stabil
Lagerungspuffer:
PBS mit 0.02% Natriumazid und 50% Glycerin pH 7.3.
Aliquotieren ist nicht notwendig bei -20°C Lagerung

***** 20ul-Größen enthalten 0.1% BSA**

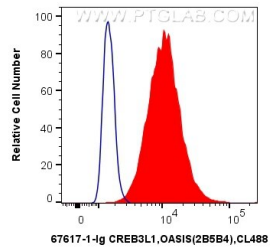
For technical support and original validation data for this product please contact:
T: 1 (888) 4PTGLAB (1-888-478-4522) (toll free in USA), or 1(312) 455-8498 (outside USA)
E: proteintech@ptglab.com
W: ptglab.com

This product is exclusively available under Proteintech Group brand and is not available to purchase from any other manufacturer.

Ausgewählte Validierungsdaten



Various lysates were subjected to SDS PAGE followed by western blot with 67617-1-Ig (CREB3L1,OASIS antibody) at dilution of 1:5000 incubated at room temperature for 1.5 hours.



1×10^6 HepG2 cells were intracellularly stained with 0.5 μ g Anti-Human CREB3L1,OASIS (67617-1-Ig, Clone:2B5B4) and CoraLite@488-Conjugated AffiniPure Goat Anti-Mouse IgG(H+L) at dilution 1:1000 (red), or 0.5 μ g Control Antibody. Cells were fixed with 4% PFA and permeabilized with Flow Cytometry Perm Buffer (PF00011-C).