

Allgemeine Informationen

Katalog-Nr.: 67620-1-Ig	GenBank-Zugangsnummer: BC050283	Reinigungsmethode: Protein-G-Reinigung
Größe: 150ul , Konzentration: 500 µg/ml durch die Bradford-Methode mit BSA als Standard;	GeneID (NCBI): 10810	CloneNo.: 3B7D10
Wirt: Maus	Vollständiger Name: WAS protein family, member 3	Empfohlene Verdünnungen: WB 1:5000-1:50000 IHC 1:500-1:2000 IF 1:200-1:800
Isotyp: IgG1	Berechnete Masse: 55 kDa	
Immunogen Katalognummer: AG29991	Beobachtete Masse: 50-55 and 66-70 kDa	

Anwendungen

Geprüfte Anwendungen:

IF, IHC, WB, ELISA

Getestete Reaktivität:

Hausschwein, Human, Kaninchen, Maus, Ratte

Hinweis-IHC: Antigendemaskierung mit TE-Puffer pH 9,0 empfohlen. (*) Wahlweise kann die Antigendemaskierung auch mit Citratpuffer pH 6,0 erfolgen.

Positivkontrollen:

WB : U-251-Zellen, Hausschwein-Cerebellum-Gewebe, Hausschwein-Hirngewebe, Kaninchenhirngewebe, Maus-Cerebellum-Gewebe, Maushirngewebe, Ratten-Cerebellum-Gewebe, Rattenhirngewebe

IHC : humanes Leberkarzinomgewebe,

IF : Maushirngewebe, humanes Leberkarzinomgewebe

Hintergrundinformationen

WASF3, also named as WAVE3 or SCAR3, belongs to the SCAR/WAVE family. It plays a role in the regulation of cell morphology and cytoskeletal organization. WASF3 is associated with the movement, invasion and metastasis in different cancers such as breast cancer, gastric cancer and prostate cancer. It has been shown that WASF3 levels are elevated in advanced stage cancers compared to lower grade tumors and normal tissue. 67620-1-Ig antibody recognizes 50-55 kDa and 66-70 kDa protein similar to the papers.(PMID: 21544801, 15826941, 31038356, 27432794, 31542393)

Lagerung

Lagerungsbedingungen:

Bei -20°C lagern.

Lagerungspuffer:

PBS mit 0.02% Natriumazid und 50% Glycerin pH 7.3.

Aliquotieren ist nicht notwendig bei -20°C Lagerung

***** 20ul-Größen enthalten 0.1% BSA**

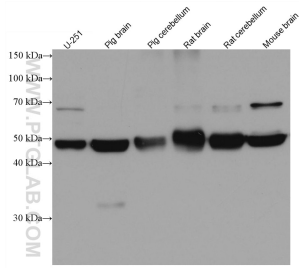
For technical support and original validation data for this product please contact:

T: 1 (888) 4PTGLAB (1-888-478-4522) (toll free in USA), or 1(312) 455-8498 (outside USA)

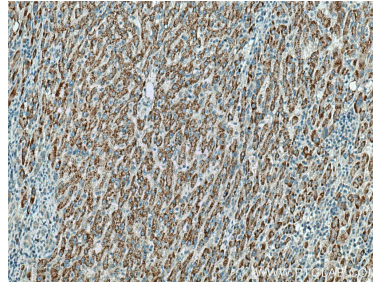
E: proteintech@ptglab.com
W: ptglab.com

This product is exclusively available under Proteintech Group brand and is not available to purchase from any other manufacturer.

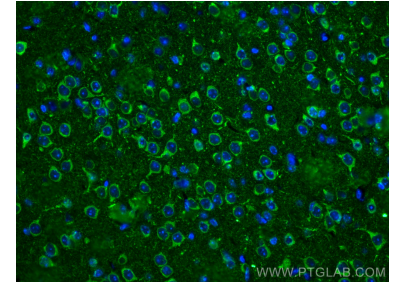
Ausgewählte Validierungsdaten



Various lysates were subjected to SDS PAGE followed by western blot with 67620-1-Ig (WASF3 antibody) at dilution of 1:40000 incubated at room temperature for 1.5 hours.



Immunohistochemical analysis of paraffin-embedded human liver cancer tissue slide using 67620-1-Ig (WASF3 antibody) at dilution of 1:1000 (under 10x lens). Heat mediated antigen retrieval with Tris-EDTA buffer (pH 9.0).



Immunofluorescent analysis of (4% PFA) fixed mouse brain tissue using WASF3 antibody (67620-1-Ig, Clone: 3B7D10) at dilution of 1:400 and CoraLite®488-Conjugated AffiniPure Goat Anti-Mouse IgG(H+L).