

Nur für Forschungszwecke

ICAM2 Monoklonaler Antikörper

Katalog-Nr.:67628-1-Ig



Allgemeine Informationen

Katalog-Nr.: 67628-1-Ig	GenBank-Zugangsnummer: BC003097	Reinigungsmethode: Protein-A-Reinigung
Größe: 150ul , Konzentration: 1991 µg/ml von3384 Nanodrop und 1000 µg/ml durch die Bradford-Methode mit BSA als Standard;	GeneID (NCBI): intercellular adhesion molecule 2	CloneNo.: 1H3C6
Wirt: Maus	Berechnete Masse: 31 kDa	Empfohlene Verdünnungen: WB 1:1000-1:6000
Isotyp: IgG2a	Beobachtete Masse: 55-60 kDa	
Immunogen Katalognummer: AG29441		

Anwendungen

Geprüfte Anwendungen: FC, WB,ELISA	Positivkontrollen: WB : human peripheral blood platelets, Jurkat-Zellen
Getestete Reaktivität: Human	

Hintergrundinformationen

ICAM2 is a cell adhesion protein having important roles in cell migration, especially during inflammation when leukocytes cross the endothelium. Initially described as a receptor for lymphocyte function-associated antigen-1 (LFA1), ICAM2 may play a role in lymphocyte recirculation by blocking LFA-1-dependent cell adhesion. It mediates adhesive interactions important for antigen-specific immune response, NK-cell mediated clearance, lymphocyte recirculation, and other cellular interactions important for immune response and surveillance.

Lagerung

Lagerungsbedingungen:
Bei -20°C lagern.
Lagerungspuffer:
PBS mit 0.02% Natriumazid und 50% Glycerin pH 7.3.
Aliquotieren ist nicht notwendig bei -20°C Lagerung

***** 20ul-Größen enthalten 0.1% BSA**

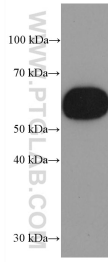
For technical support and original validation data for this product please contact:

T: 1 (888) 4PTGLAB (1-888-478-4522) (toll free
in USA), or 1(312) 455-8498 (outside USA)

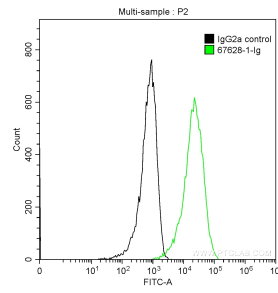
E: proteintech@ptglab.com
W: ptglab.com

This product is exclusively available under Proteintech Group brand and is not available to purchase from any other manufacturer.

Ausgewählte Validierungsdaten



human peripheral blood platelets were subjected to SDS PAGE followed by western blot with 67628-1-Ig (ICAM2 antibody) at dilution of 1:3000 incubated at room temperature for 1.5 hours.



1×10^6 HUVEC cells were stained with 0.2 μ g Anti-Human ICAM2 (67628-1-Ig, Clone:1H3C6) and CoraLite[®]488-Conjugated AffiniPure Goat Anti-Mouse IgG(H+L) at dilution 1:1000 (green), or stained with 0.2 μ g mouse IgG2a isotype control and CoraLite[®]488-Conjugated AffiniPure Goat Anti-Mouse IgG(H+L) at dilution 1:1000 (black). Cells were fixed with 90% MeOH.